



Owners Manual

# SnowFire System

Kage Innovation™ LLC

[kageinnovation.com](http://kageinnovation.com)  
[\(844\) 314-KAGE](tel:844314KAGE)



## **Kage Limited Warranty**

Kage Innovation will repair or, at the option of Kage Innovation, replace those parts which prove defective due to material or workmanship under normal use for a period of two (2) years from the date of retail sale or date of invoice from Kage Innovation, whichever is later. Expendable items, such as rubber, or polyurethane are excluded from this warranty.

Kage Innovation warrants that the products manufactured by us to be in accordance with our published specifications or those specifications agreed to by us in writing at the time of sale. The obligation of Kage Innovation is expressly limited to repairing or replacing, at its option, any product not meeting such specifications within the warranty period.

### LIMITATIONS OF WARRANTY AND DAMAGES

KAGE INNOVATION MAKES NO OTHER WARRANTY, EXPRESSED OR IMPLIED, AND MAKES NO WARRANTY OF MERCHANTABILITY OR OF FITNESS FOR ANY PARTICULAR PURPOSE. THERE ARE NO WARRANTIES WHICH EXTEND BEYOND THE FACE HEREOF.

IN NO EVENT SHALL KAGE INNOVATION, BE HELD LIABLE FOR SPECIAL, INCIDENTAL OR CONSEQUENTIAL DAMAGES OR FOR DAMAGES RESULTING FROM MISAPPLICATION, ABUSE, MISUSE, ACTS OF GOD, UNAUTHORIZED ALTERATION OF THE KAGE INNOVATION PRODUCT, OR SUBSTITUTION OF PARTS NOT AUTHORIZED IN WRITING BY KAGE INNOVATION.

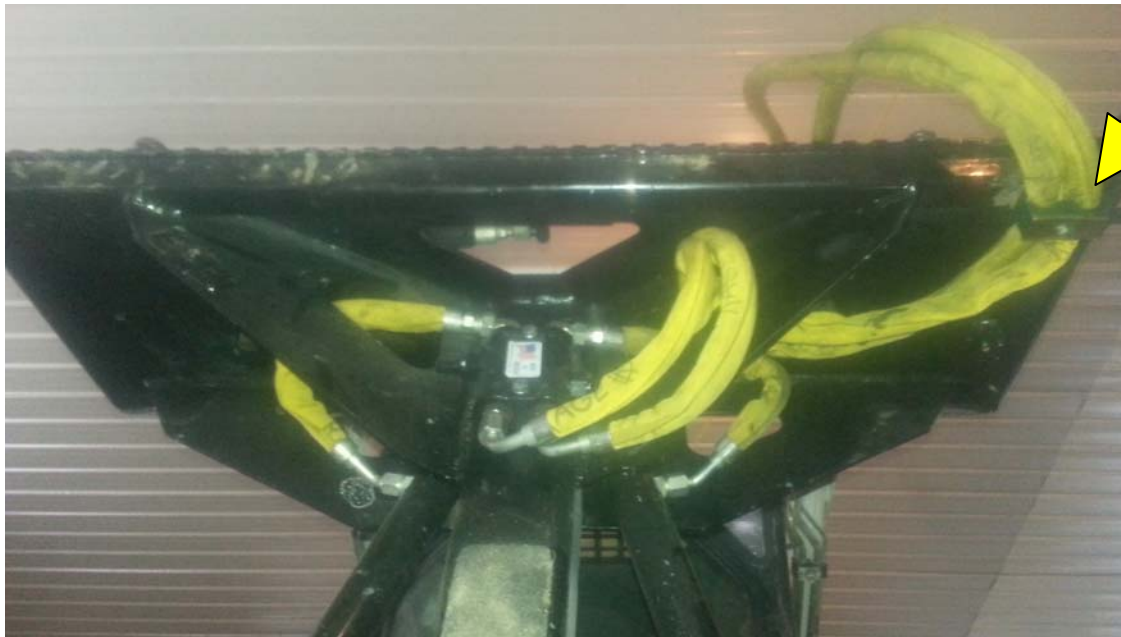
To obtain service under this warranty the consumer must return the defective Kage Innovation product to Kage Innovation directly, the dealer from which the product was purchased or to any authorized Kage Innovation dealer, transportation and freight charges prepaid. Only Kage Innovation dealers are authorized to perform the obligations under this warranty with pre-authorization from Kage Innovation.

No person is authorized to alter or amend this warranty or to create any warranty other than that set forth herein without the expressed written consent of Kage Innovation.

Kage Innovation reserves the right to make improvement changes on any of our products without prior notice.

## Important Notice for Bobcat® Users

Please note that for Bobcat brand machines the hoses should be routed through the **upper driver side hose clamp**, with the hoses elbows angled as shown. If a second option is needed route hoses through the **passenger hose clamp** shown in the second image. Once the hose routing is complete, adjust the hose length between the plow and the machine to be taught with the plow tipped all the way forward.

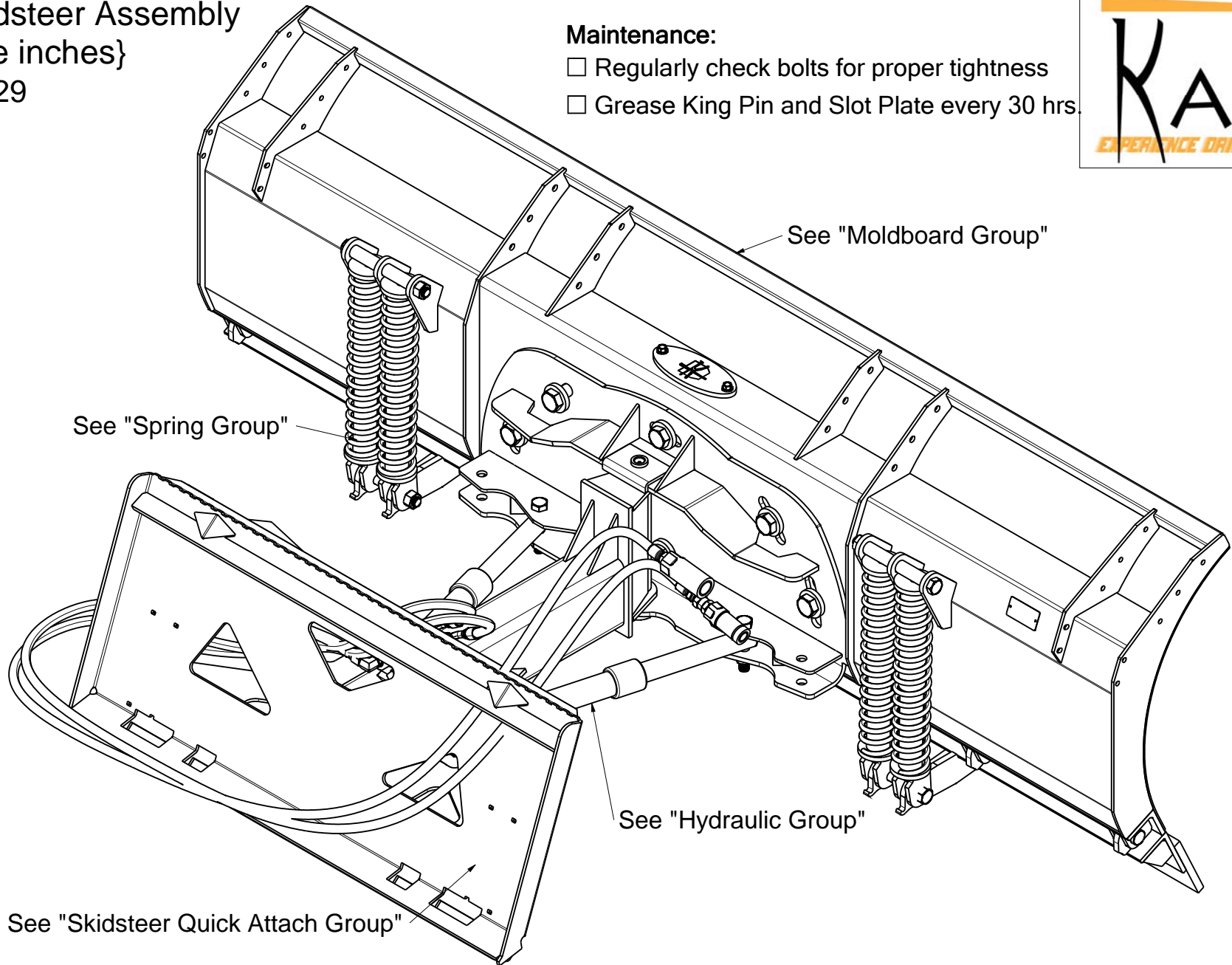


# SF Skidsteer Assembly SB{size inches}

Version# 29

## Maintenance:

- Regularly check bolts for proper tightness
- Grease King Pin and Slot Plate every 30 hrs.

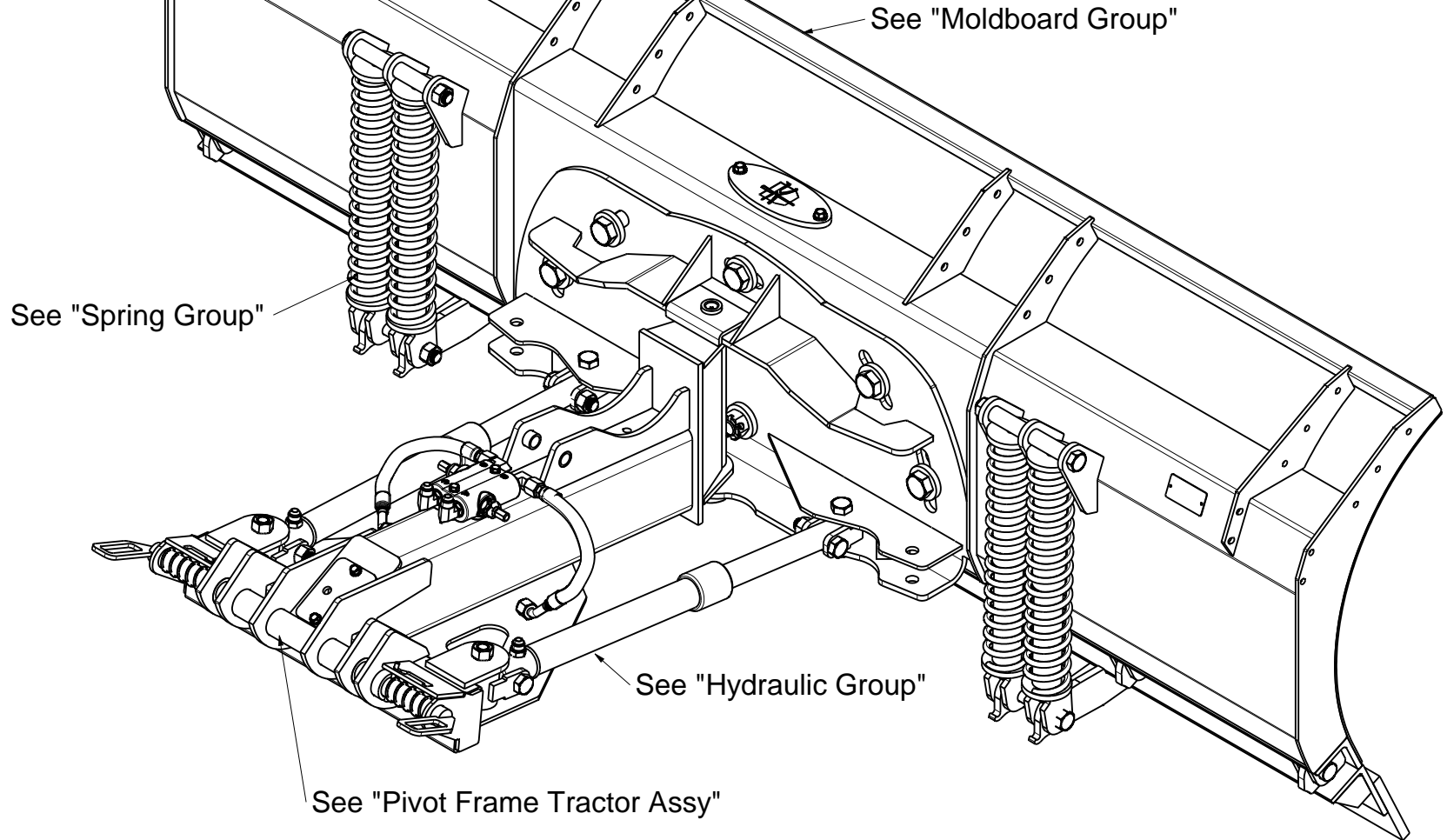


# SF 2 Pin Tractor Assembly TB{size in inches}

Version#

## Maintenance:

- Regularly check bolts for proper tightness
- Grease King Pin and Slot Plate every 30 hrs.

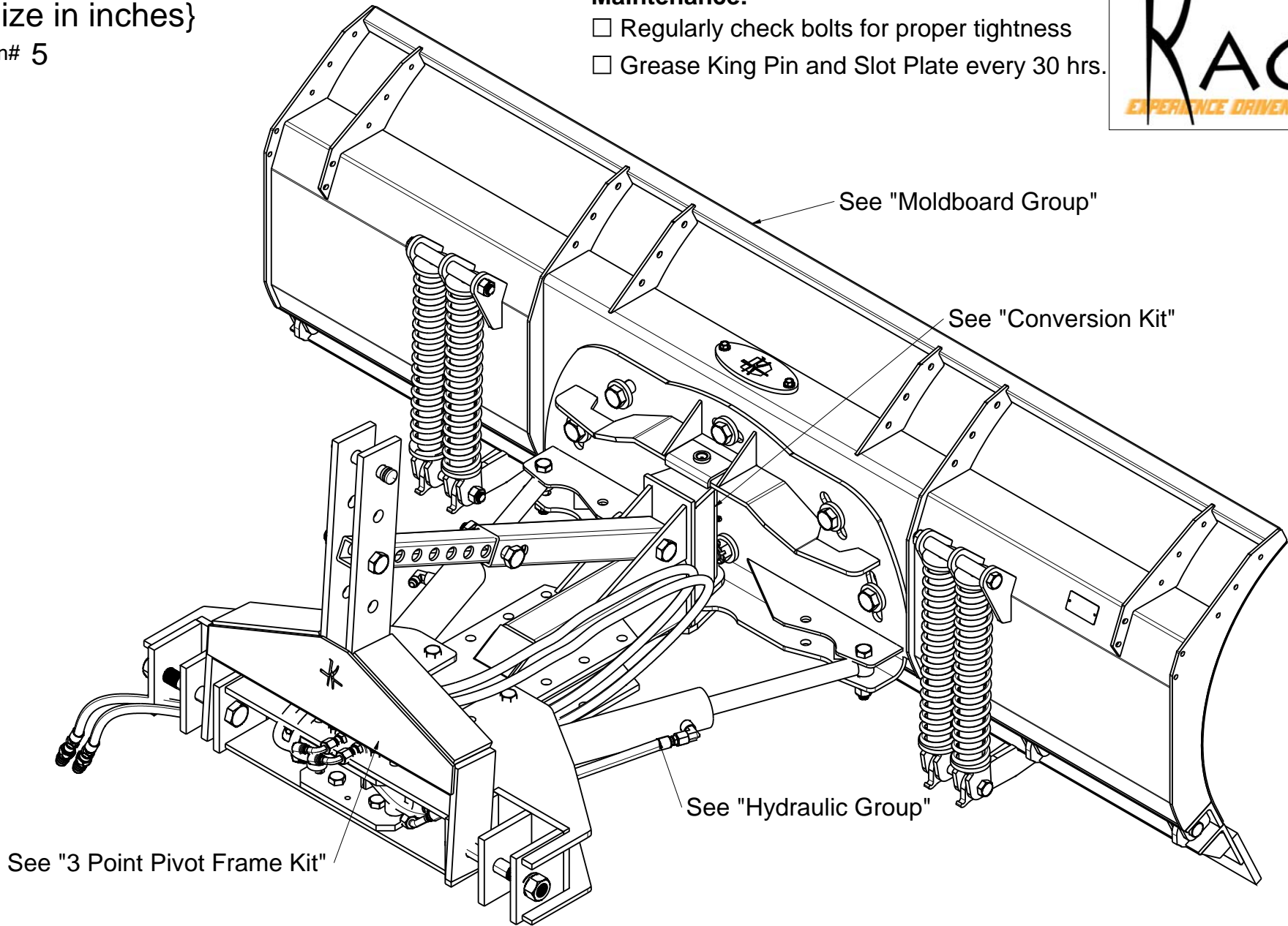


# SF 3 Point Tractor Assembly 3B{size in inches}

Version# 5

## Maintenance:

- Regularly check bolts for proper tightness
- Grease King Pin and Slot Plate every 30 hrs.

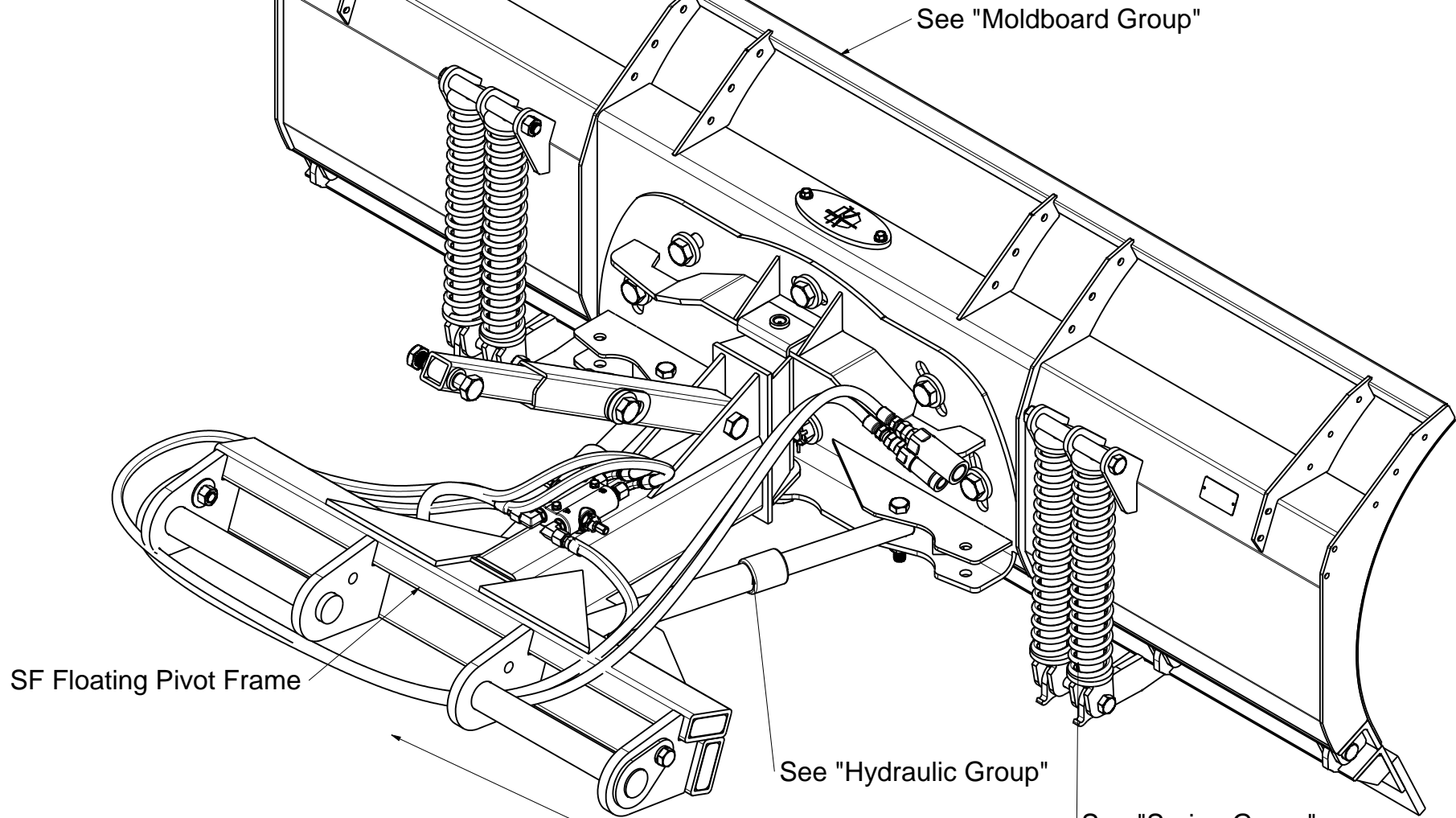


# SF Loader Assembly LB{Size Inches}

Version# 13

## Maintenance:

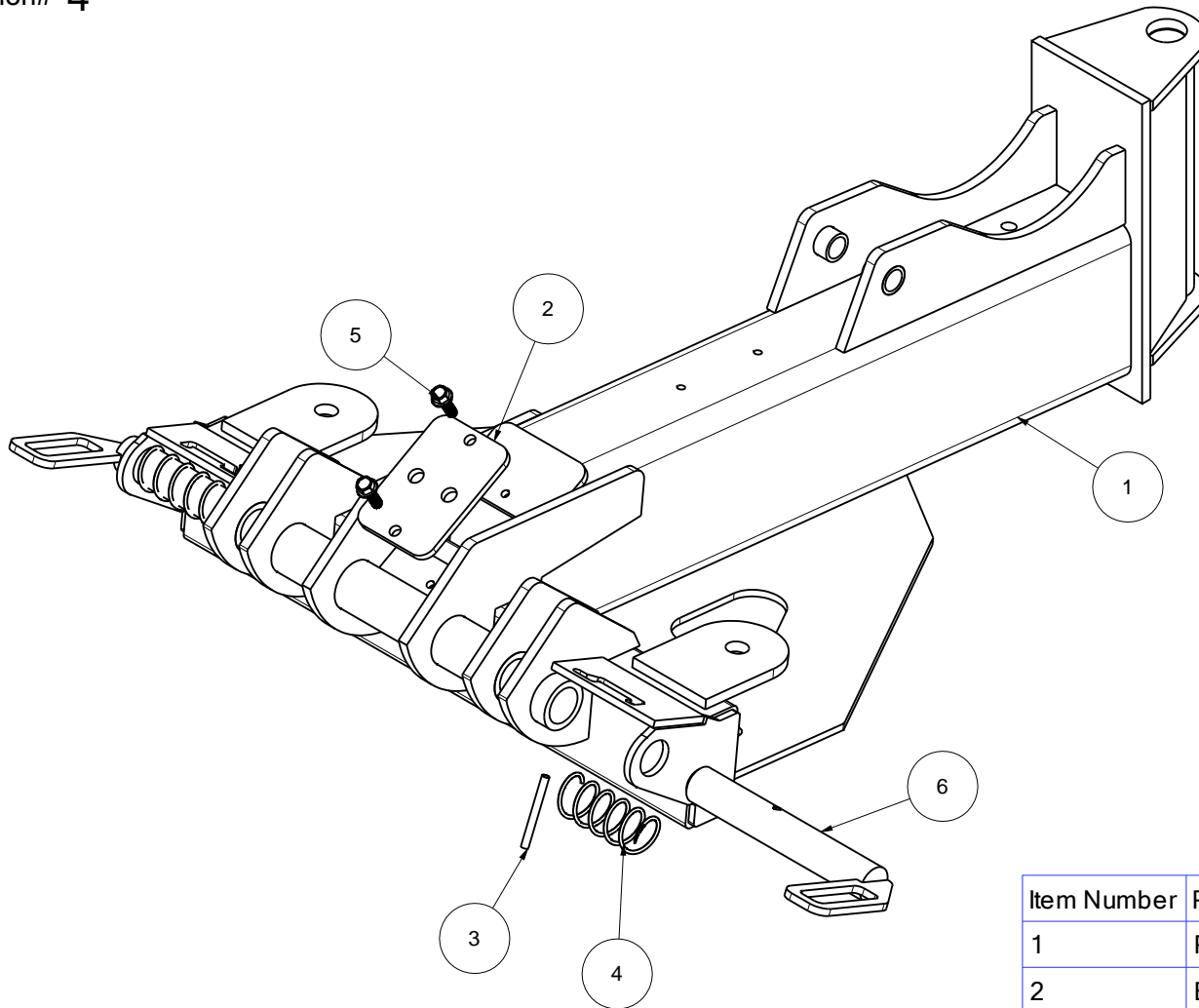
- Regularly check bolts for proper tightness
- Grease King Pin and Slot Plate every 30 hrs.



Select appropriate Loader Quick Attach (Not Shown)

# Pivot Frame Tractor Assy PF-101-TractorAssy

Version# 4

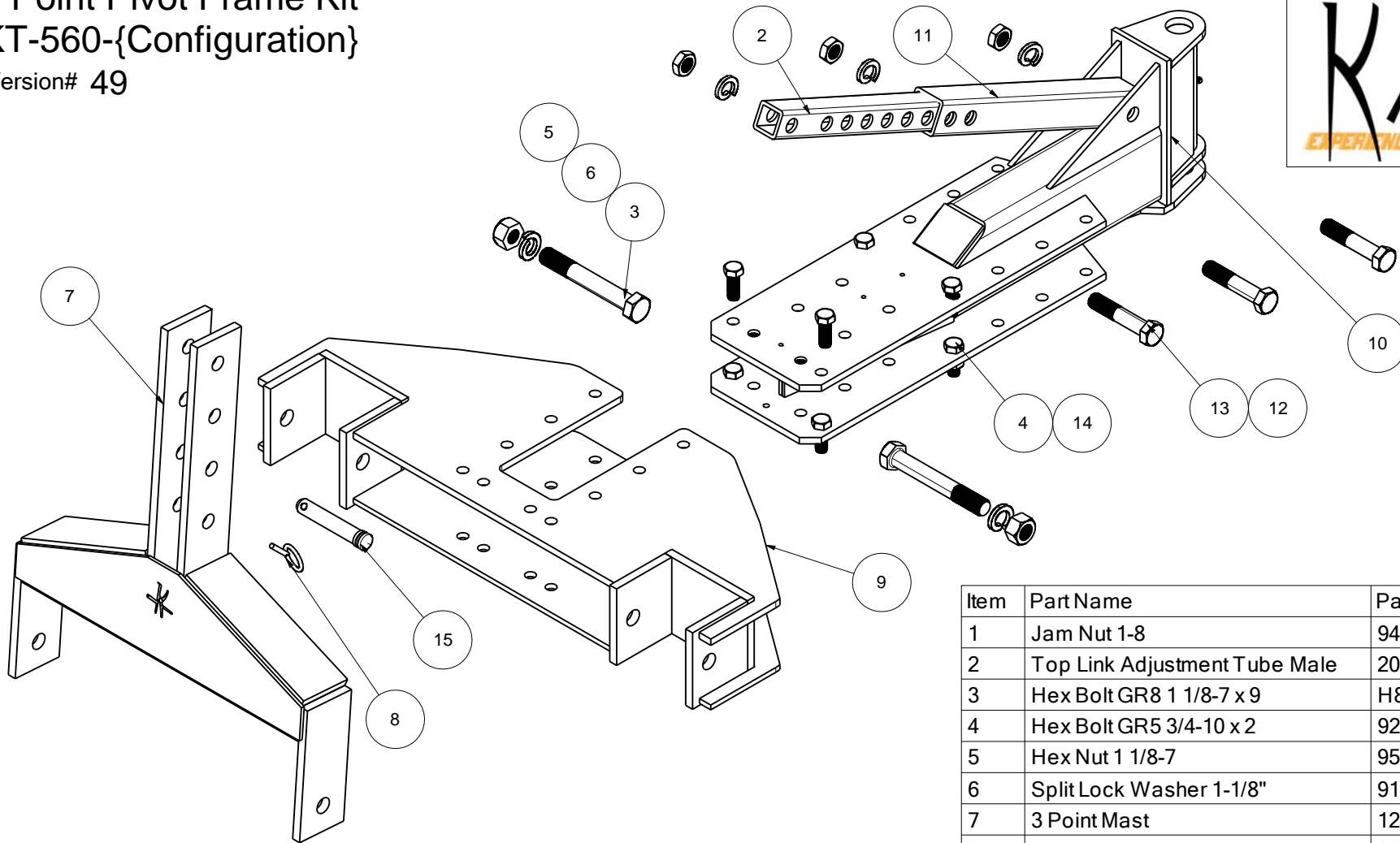


Item Number	Part Name	Part Number	Quantity
1	PIVOT FRAME Tractor	PF-101-Tractor	1
2	Bolt Flange	378-4	1
3	Tension Pin	95755A429	2
4	Spring, Pin	3135	2
5	Flange Hex Bolt GR5 5/16 - 18 x 1	92979A253	2
6	Locking Pin	PVN-2-A	2



# 3 Point Pivot Frame Kit KT-560-*{Configuration}*

Version# 49



Item	Part Name	Part Number	Qty
1	Jam Nut 1-8	94846A550	3
2	Top Link Adjustment Tube Male	20-100	1
3	Hex Bolt GR8 1 1/8-7 x 9	H8P 113 0900 7	2
4	Hex Bolt GR5 3/4-10 x 2	92865A843	8
5	Hex Nut 1 1/8-7	95462A557	2
6	Split Lock Washer 1-1/8"	91102A039	2
7	3 Point Mast	12-200	1
8	Lynch Pin	90170A226	1
9	3 Point Hitch Converter CAT2	8P9-8200	1
10	PIVOT FRAME GROUP 3 POINT	KBW-PF-3POINT	1
11	Top Link Adjustment Tube Female	20-120	1
12	Lockwasher 1"	91102A038	3
13	Hex Bolt GR8 1-8 x 5	91257A965	3
14	CenterLocknut GR2 3/4-10	90040A147-K5	8
15	Top Link Pin	21262	1

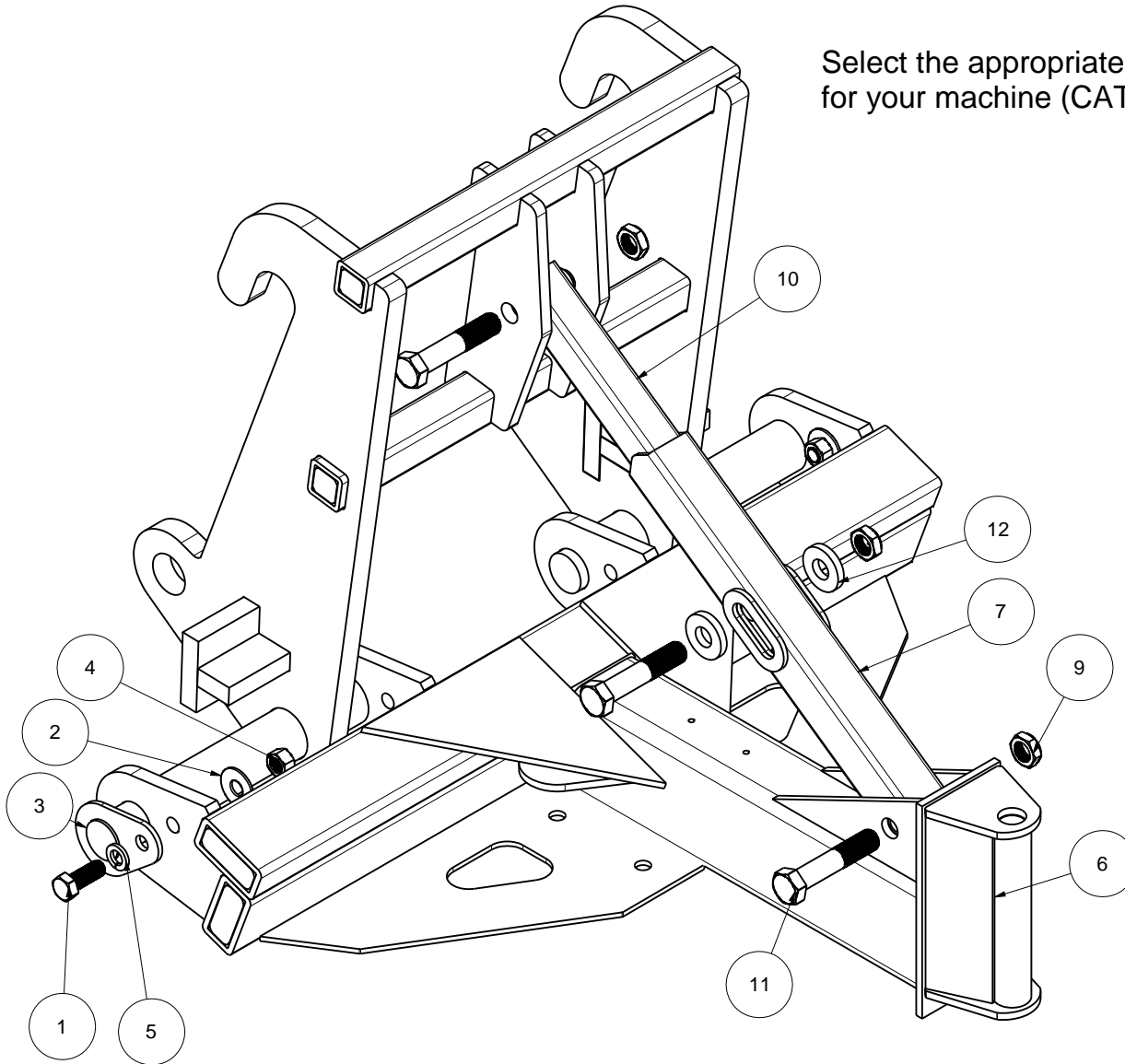
# SF Floating Pivot Frame Assy

## PF-101-LoaderAssy-{Quick Attach P/n}

Version# 39



Select the appropriate Loader Quick Attach for your machine (CAT IT28 used for example)



Item	Part Name	Part Number	Qty
1	Hex Bolt GR5 3/4-10 x 2	92865A843	2
2	3/4" Flat Washer	90108A036	2
3	Float Pin	67-001	2
4	CenterLocknut GR2 3/4-10	90040A147-K5	2
5	Lockwasher 3/4	91102A036	2
6	Pivot Frame SF loaders	PF-101-Loader	1
7	Slotted Female Weldment	126-1	1
8	Top Link Bushing	201-3	2
9	1-8 Thin Hex Nylock Nut Gr5	91342A260	3
10	Male Tube Weldment	128-1	1
11	Hex Bolt GR8 1-8 x 5	91257A965	3
12	1-.375 washer	13W	2

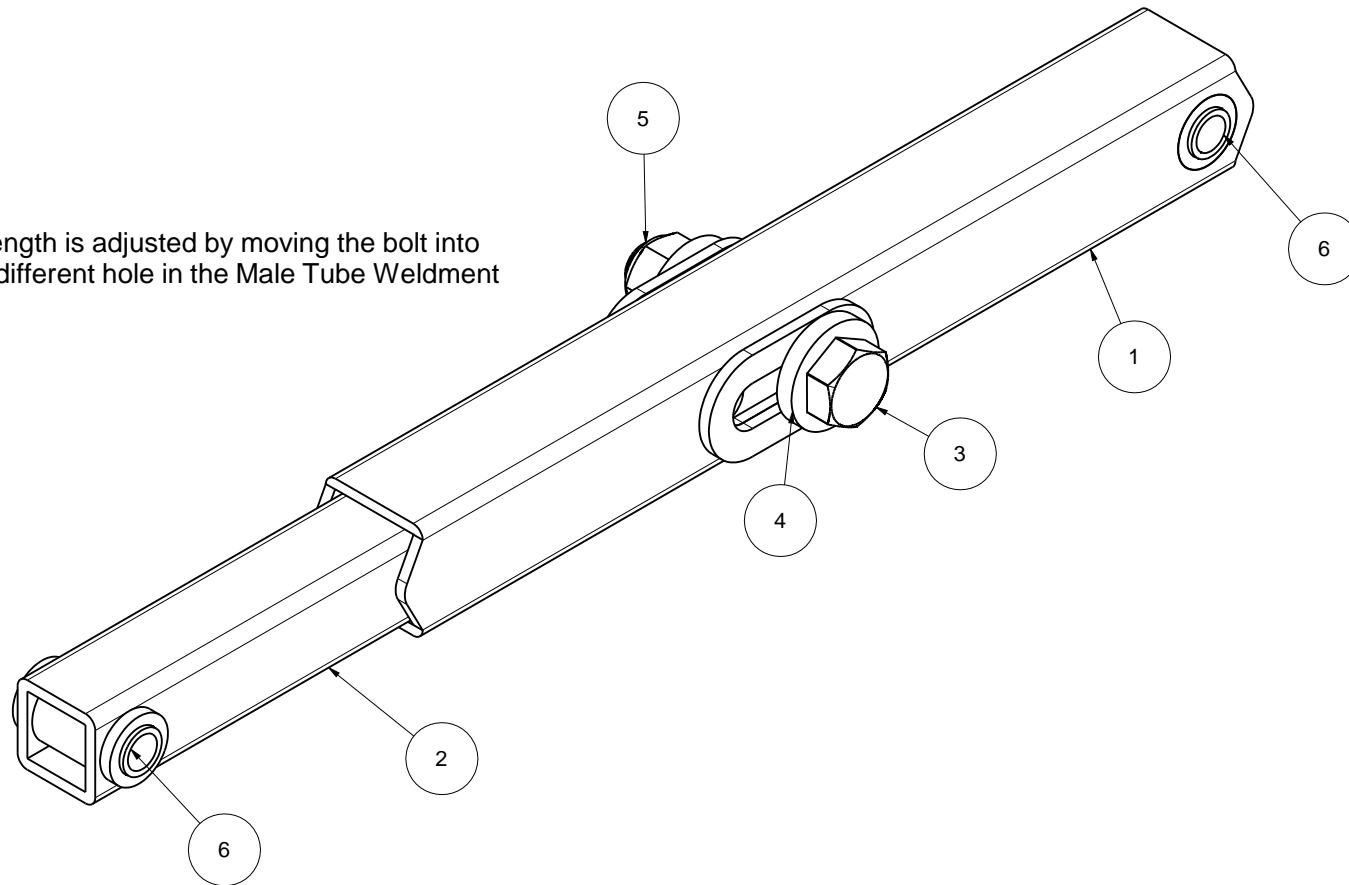
# Floating Top Link

101

Version#



Length is adjusted by moving the bolt into a different hole in the Male Tube Weldment



Item Number	Part Name	Part Number	Quantity
1	Slotted Female Weldment	126-1	1
2	Male Tube Weldment	128-1	1
3	Hex Bolt GR8 1-8 x 5	91257A965	1
4	1-.375 washer	13W	2
5	Grade 8 Steel Nylon-Insert Locknut	97135A038	1
6	Top Link Bushing	201-3	2

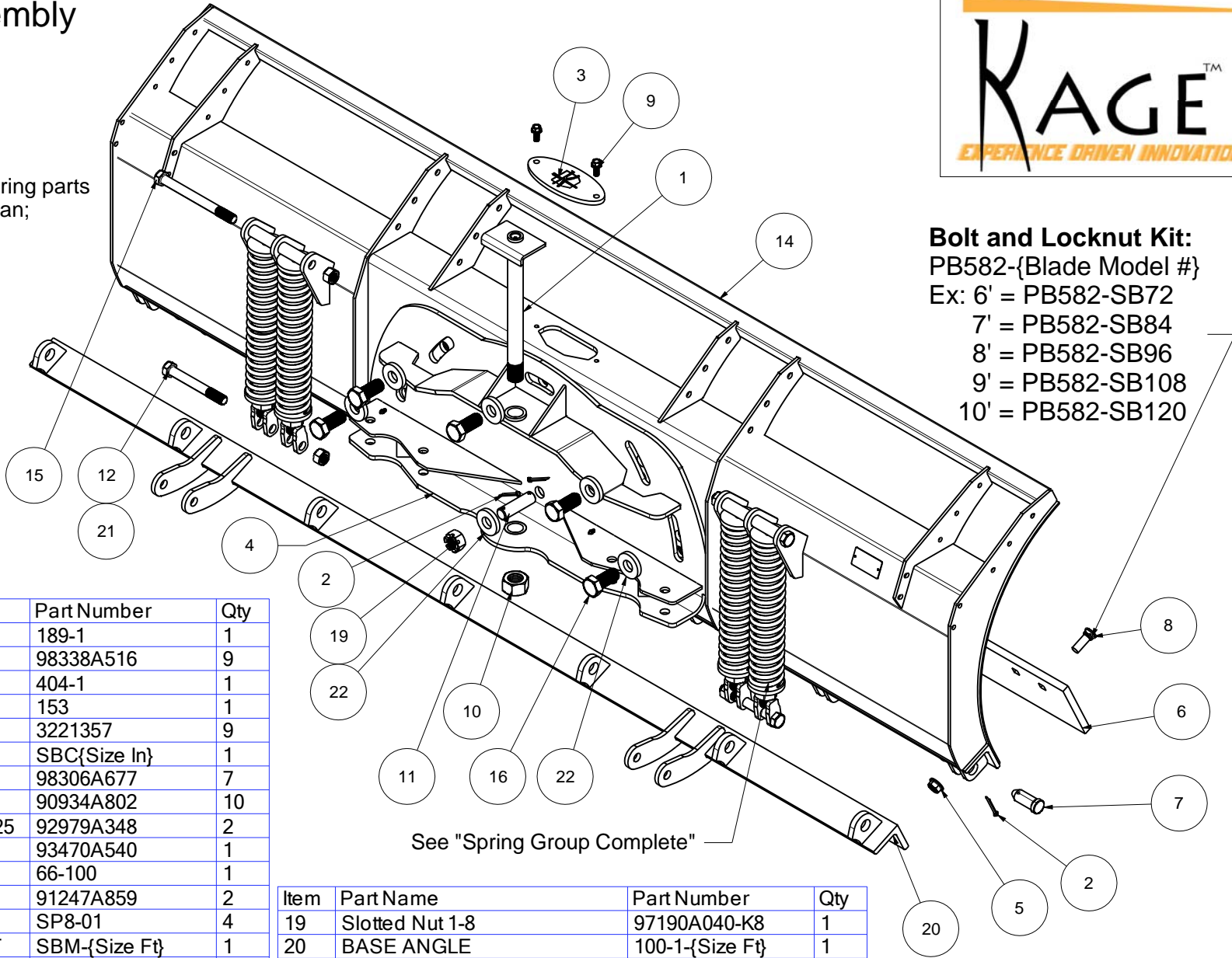
# SF Moldboard Assembly

## SFM{size feet}

Version#

Use this break down when ordering parts if your plow's serial # is lower than;

- SB120 400-10280
- SB108 400-52447
- SB96 400-54447
- SB72 400-52216



**Bolt and Locknut Kit:**  
 PB582-{Blade Model #}  
 Ex: 6' = PB582-SB72  
 7' = PB582-SB84  
 8' = PB582-SB96  
 9' = PB582-SB108  
 10' = PB582-SB120

Item	Part Name	Part Number	Qty
1	KING PIN	189-1	1
2	Cotter Pin 3/16 x 2	98338A516	9
3	Hole Cap	404-1	1
4	SLOT PLATE	153	1
5	Flange Locknut 5/8-11	3221357	9
6	Cutting Edge	SBC{Size In}	1
7	Clevis Pin	98306A677	7
8	Plow Bolt 5/8-11 x 2"	90934A802	10
9	Flange Hex Bolt 3/8 - 16 - 1.25	92979A348	2
10	Hex Locknut 1.25-7	93470A540	1
11	GR8 Stud 1-8	66-100	1
12	Hex Bolt GR5 3/4-10 x 6	91247A859	2
13	Spring Top	SP8-01	4
14	MOLDBOARD WELDMENT	SBM-{Size Ft}	1
15	Hex Bolt GR5 3/4-10 x 8	91247A863	2
16	HEX BOLT GR8 1-8 x 2.25	92620A954	5
17	Spring Bottom	SP-160	4
18	Name Plate	KAGE001-11399-2	1

See "Spring Group Complete"

Item	Part Name	Part Number	Qty
19	Slotted Nut 1-8	97190A040-K8	1
20	BASE ANGLE	100-1-{Size Ft}	1
21	CenterLocknut GR2 3/4-10	90040A147-K5	4
22	1-.375 washer	13W	6
23	Spring	SP1-4	4
24	Kage Blade Decal	PB-01	1

# SF Moldboard Assembly

## SFM{size feet}

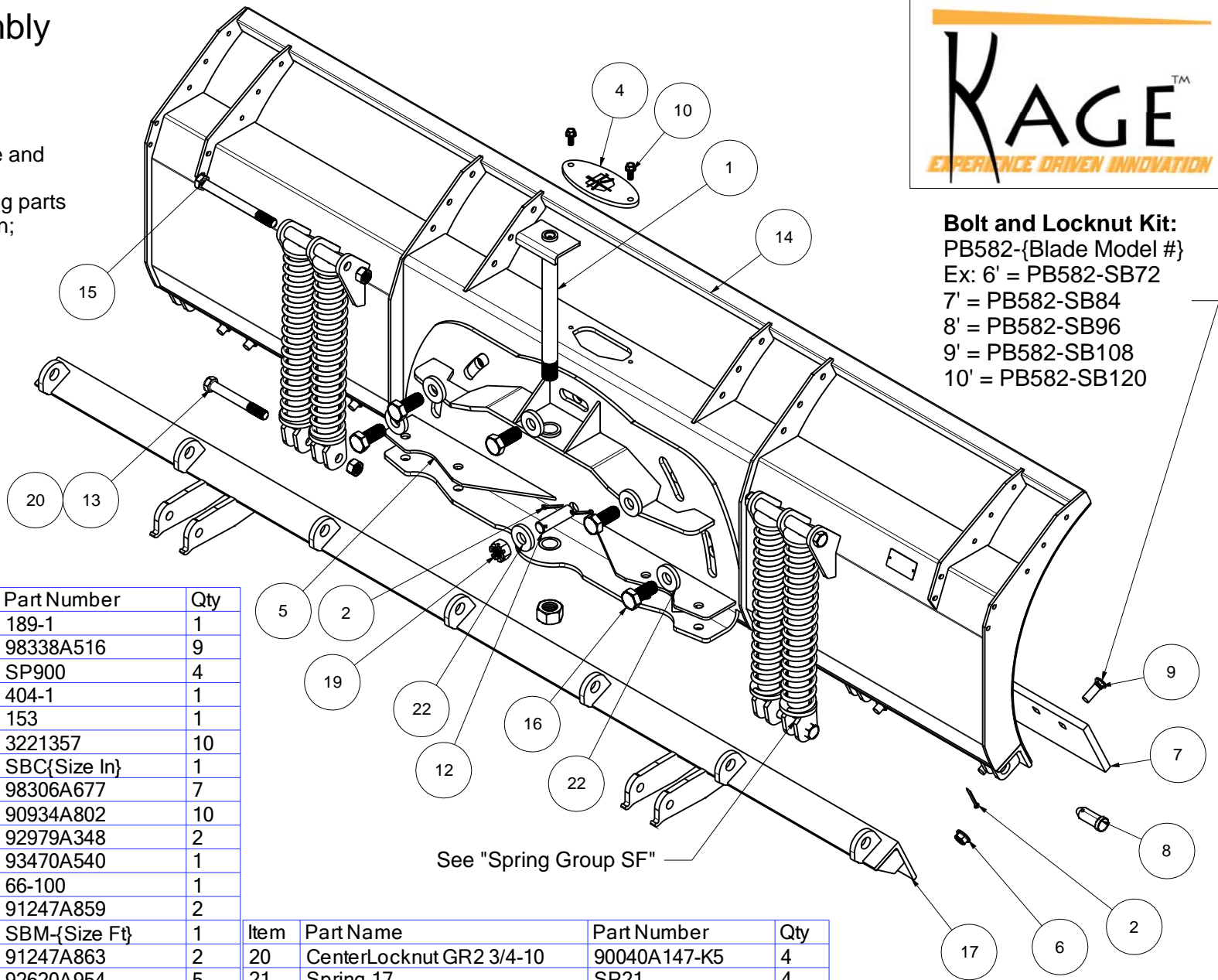
Version#

This model has a taller base angle and springs than previous models. Use this break down when ordering parts if your plow's serial # is higher than;

- SB120 400-10279
- SB108 400-52446
- SB96 400-54446
- SB72 400-52215



**Bolt and Locknut Kit:**  
 PB582-{Blade Model #}  
 Ex: 6' = PB582-SB72  
 7' = PB582-SB84  
 8' = PB582-SB96  
 9' = PB582-SB108  
 10' = PB582-SB120

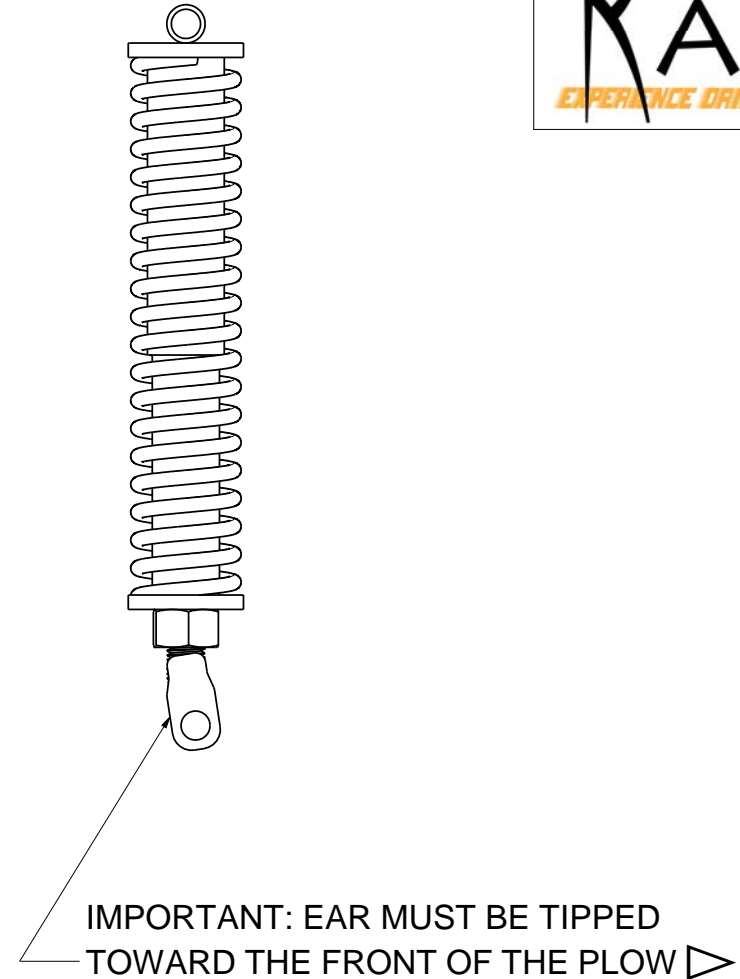
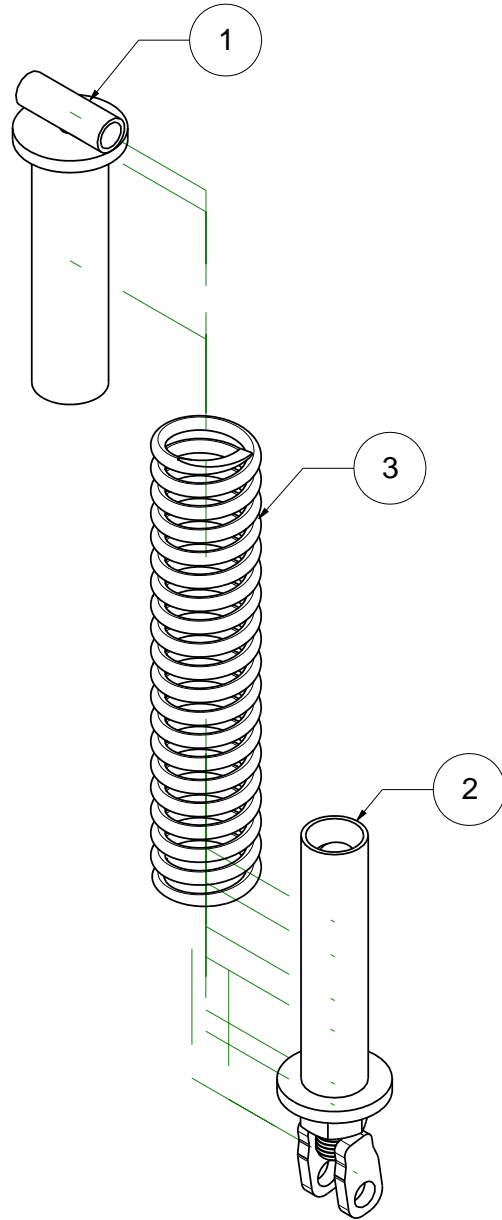


See "Spring Group SF"

Item	Part Name	Part Number	Qty
1	KING PIN	189-1	1
2	Cotter Pin 3/16 x 2	98338A516	9
3	Spring Top	SP900	4
4	Hole Cap	404-1	1
5	SLOT PLATE	153	1
6	Flange Locknut 5/8-11	3221357	10
7	Cutting Edge	SBC{Size In}	1
8	Clevis Pin	98306A677	7
9	Plow Bolt 5/8-11 x 2"	90934A802	10
10	Flange Hex Bolt 3/8 - 16 - 1.25	92979A348	2
11	Hex Locknut 1.25-7	93470A540	1
12	GR8 Stud 1-8	66-100	1
13	Hex Bolt GR5 3/4-10 x 6	91247A859	2
14	MOLDBOARD WELDMENT	SBM-{Size Ft}	1
15	Hex Bolt GR5 3/4-10 x 8	91247A863	2
16	HEX BOLT GR8 1-8 x 2.25	92620A954	5
17	Base Angle SF	214-{Size Ft}	1
18	Name Plate	KAGE001-11399-2	1
19	Slotted Nut 1-8	97190A040-K8	1

Item	Part Name	Part Number	Qty
20	CenterLocknut GR2 3/4-10	90040A147-K5	4
21	Spring 17	SP21	4
22	1-.375 washer	13W	6
23	Kage Blade Decal	PB-01	1
24	Spring Bottom L	SP800	4

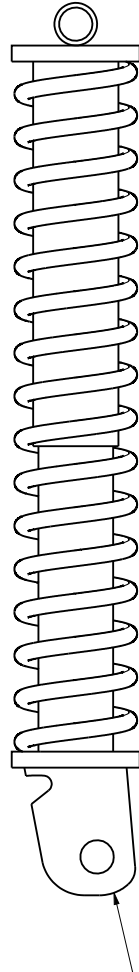
# Spring Group Complete SP-162



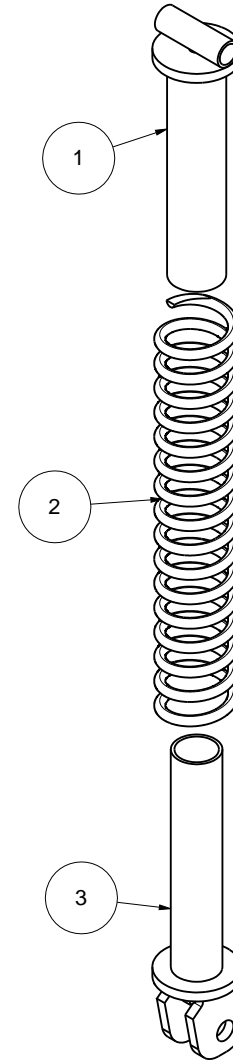
Item Number	Part Name	Part Number	Quantity
1	Spring Top	SP8-01	1
2	Spring Bottom	SP-160	1
3	Spring	SP1-4	1

# Spring Group SF SP980

Version# 1



IMPORTANT: EAR MUST BE TIPPED  
TOWARD THE FRONT OF THE FLOW ▶



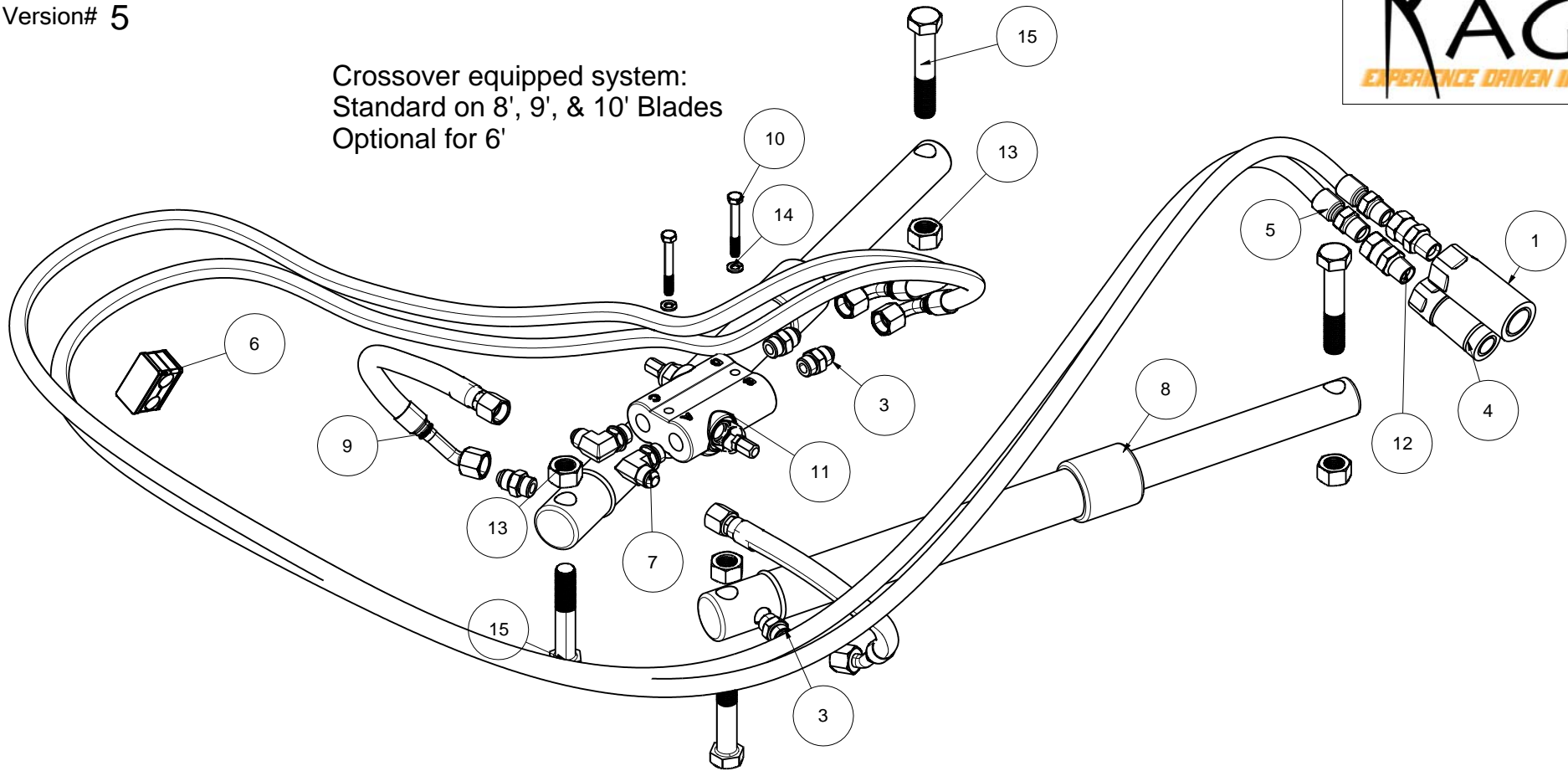
Item Number	Part Name	Part Number	Quantity
1	Spring Top	SP900	1
2	Spring 17	SP21	1
3	Spring Bottom L	SP800	1

# Hydraulic Group SF \_w Crossover HYDROCO-SF

Version# 5



Crossover equipped system:  
Standard on 8', 9', & 10' Blades  
Optional for 6'

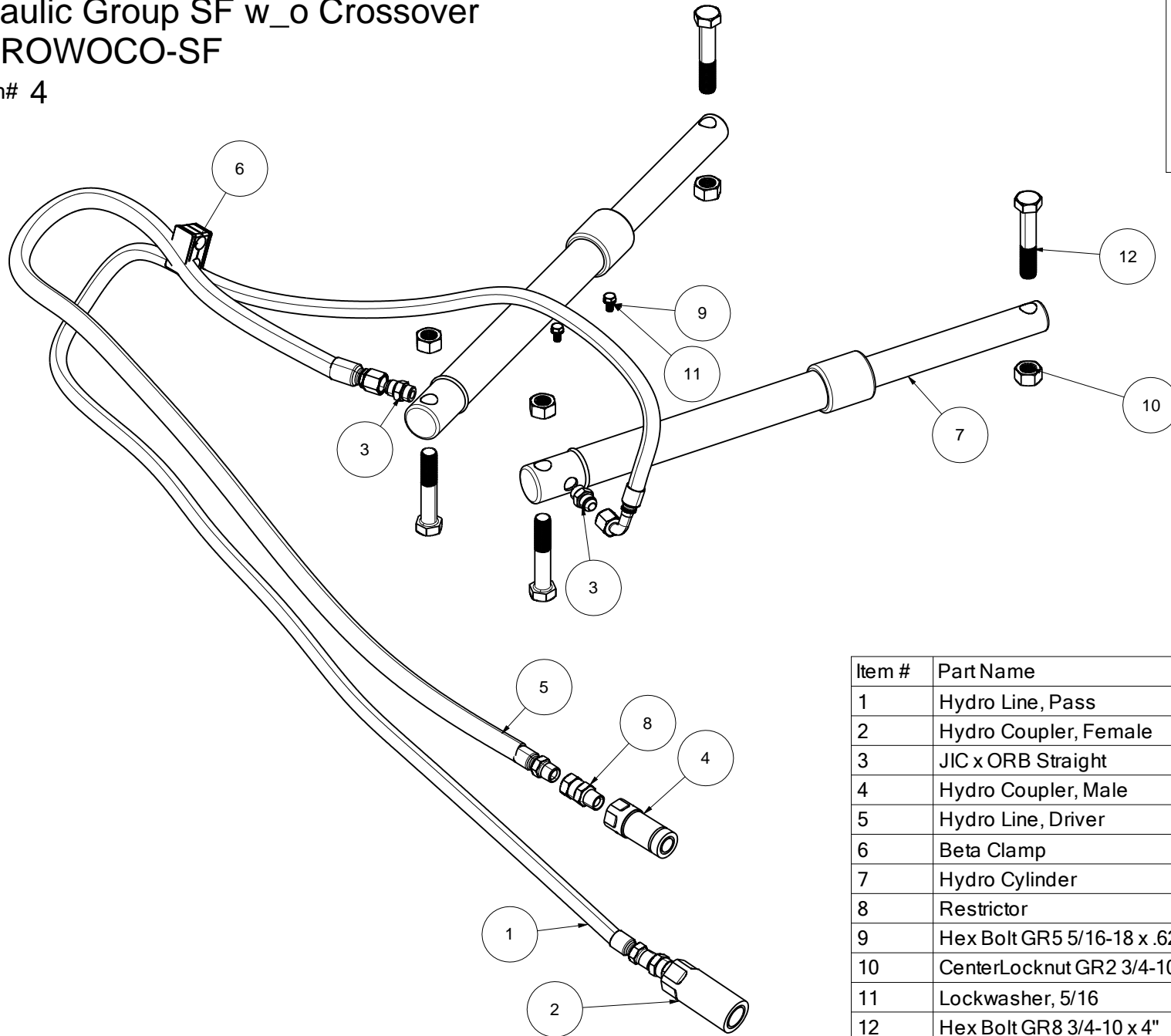


Item #	Part Name	Part Number	Qty	Item #	Part Name	Part Number	Qty
1	Hydro Coupler, Female	FEM-501-8FP-NL	1	9	Crossover Line	HY-701-ORB	2
3	JIC x ORB Straight	08MB-08MJ	4	10	Hex Bolt GR5 5/16-18 x 2.5	91247A593	2
4	Hydro Coupler, Male	FEM-502-8FP	1	11	Crossover Relief Valve	DRV-5HH-30-30-ORB	1
5	Hydro Line, Pass	HY-707	2	12	Restrictor	1404R-08-08 .062	2
6	Beta Clamp	T3014-S	1	13	CenterLocknut GR2 3/4-10	90040A147-K5	4
7	JIC x ORB 90 Elbow	08MB-08MJ90	2	14	Lockwasher, 5/16	ROC-8076-030	2
8	Hydro Cylinder	BK-0489-ORB-Nitro	2	15	Hex Bolt GR8 3/4-10 x 4"	91257A851	4



# Hydraulic Group SF w\_o Crossover HYDROWOCO-SF

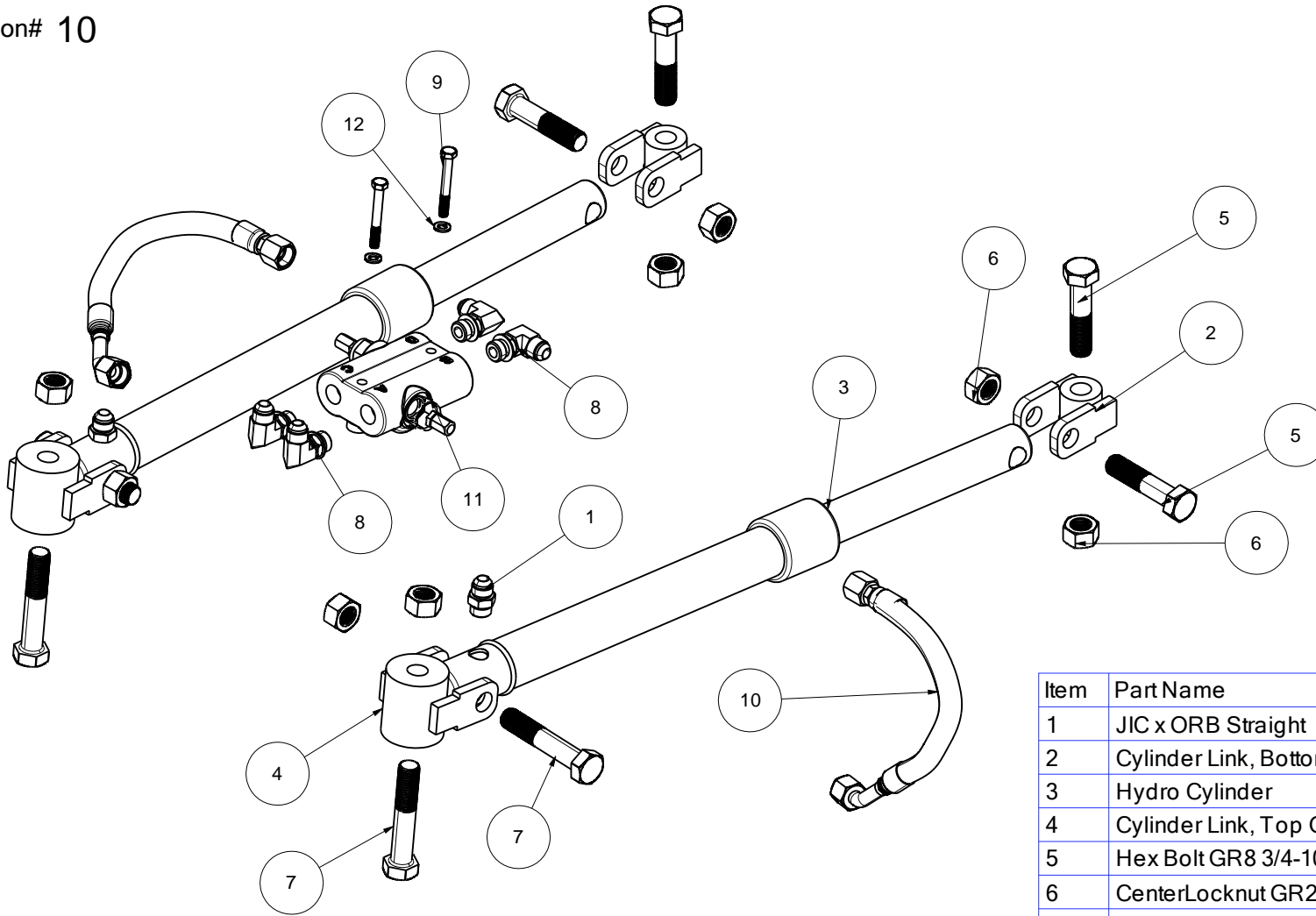
Version# 4



Item #	Part Name	Part Number	Qty
1	Hydro Line, Pass	HY-707	1
2	Hydro Coupler, Female	FEM-501-8FP-NL	1
3	JIC x ORB Straight	08MB-08MJ	2
4	Hydro Coupler, Male	FEM-502-8FP	1
5	Hydro Line, Driver	HY-708	1
6	Beta Clamp	T3014-S	1
7	Hydro Cylinder	BK-0489-ORB-Nitro	2
8	Restrictor	1404R-08-08 .062	2
9	Hex Bolt GR5 5/16-18 x .625	92865A580	2
10	CenterLocknut GR2 3/4-10	90040A147-K5	4
11	Lockwasher, 5/16	ROC-8076-030	2
12	Hex Bolt GR8 3/4-10 x 4"	91257A851	4

# Hydraulic Group 2 Pin Tractor HYDRO2P-SF

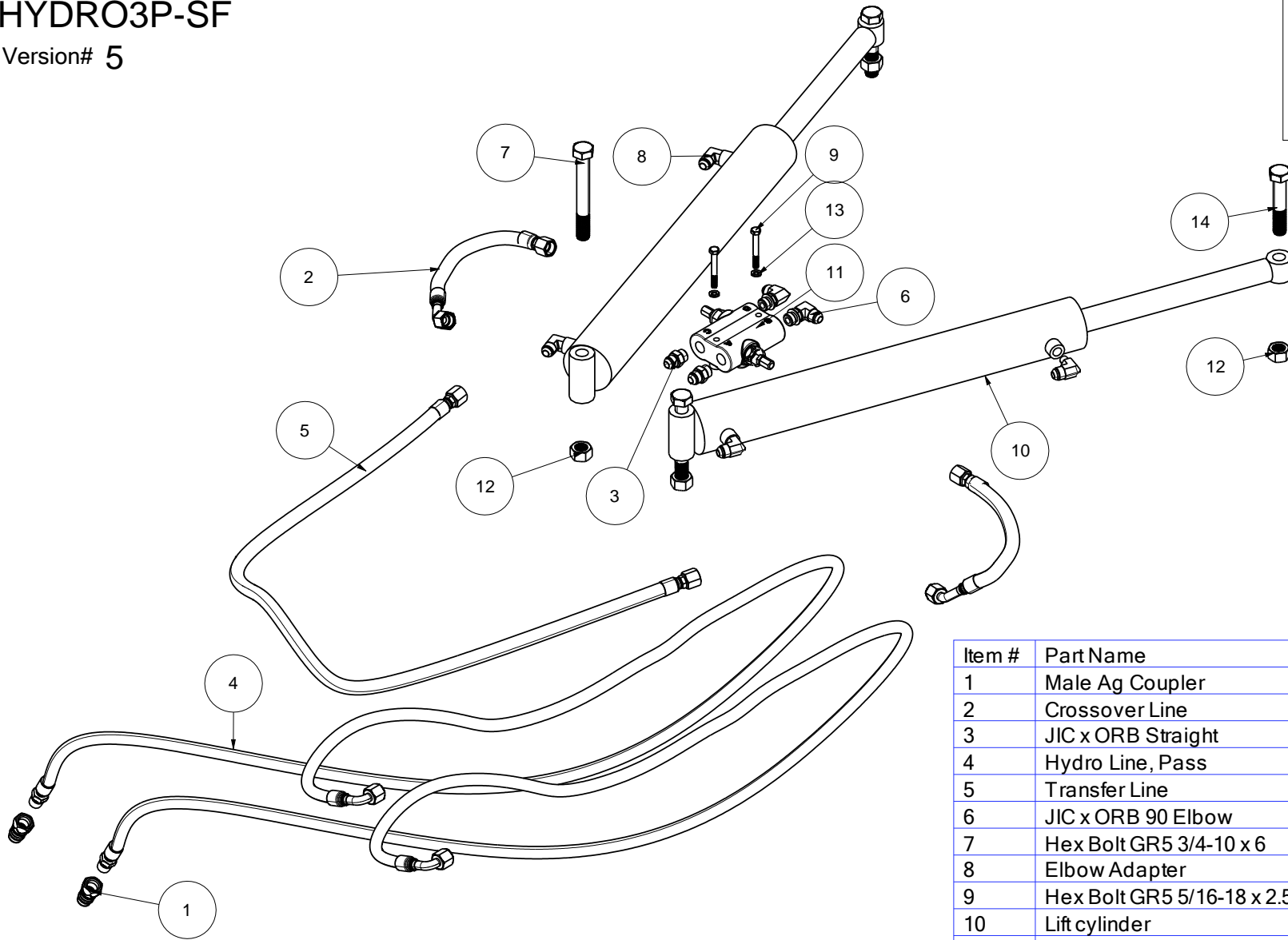
Version# 10



Item	Part Name	Part Number	Qty
1	JIC x ORB Straight	08MB-08MJ	2
2	Cylinder Link, Bottom Group	KL-875-2	2
3	Hydro Cylinder	BK-0489-ORB-Nitro	2
4	Cylinder Link, Top Group	KL-352-2	2
5	Hex Bolt GR8 3/4-10 x 3.25"	91257A848	4
6	CenterLocknut GR2 3/4-10	90040A147-K5	8
7	Hex Bolt GR8 3/4-10 x 4"	91257A851	4
8	JIC x ORB 90 Elbow	08MB-08MJ90	4
9	Hex Bolt GR5 5/16-18 x 2.5	91247A593	2
10	Crossover Line	HY-701-ORB	2
11	Crossover Relief Valve	DRV-5HH-30-30-ORE	1
12	Lockwasher, 5/16	ROC-8076-030	2

# Hydraulic Group 3 Point Hitch to SF convert HYDRO3P-SF

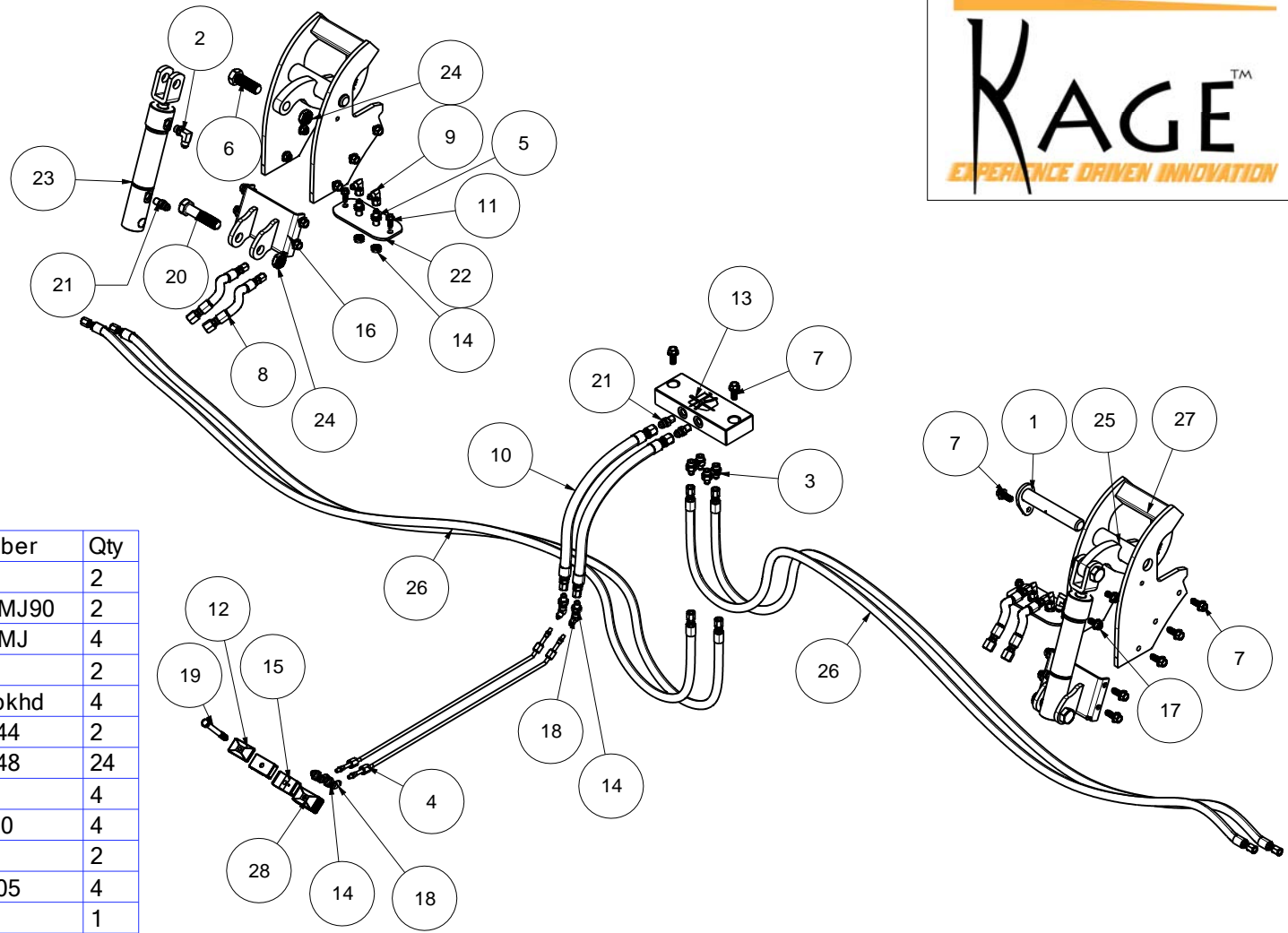
Version# 5



Item #	Part Name	Part Number	Quantity
1	Male Ag Coupler	19-400	2
2	Crossover Line	HY-701-ORB	2
3	JIC x ORB Straight	08MB-08MJ	2
4	Hydro Line, Pass	HY-707	2
5	Transfer Line	1-640	1
6	JIC x ORB 90 Elbow	08MB-08MJ90	2
7	Hex Bolt GR5 3/4-10 x 6	91247A859	2
8	Elbow Adapter	08MJ-06MP90	4
9	Hex Bolt GR5 5/16-18 x 2.5	91247A593	2
10	Lift cylinder	PMC-5420	2
11	Crossover Relief Valve	DRV-5HH-30-30-ORB	1
12	CenterLocknut GR2 3/4-10	90040A147-K5	4
13	Lockwasher, 5/16	ROC-8076-030	2
14	Hex Bolt GR8 3/4-10 x 4"	91257A851	2

# Hydro Lock kit 2 Point Hitch KTSCB2P

Version# 93

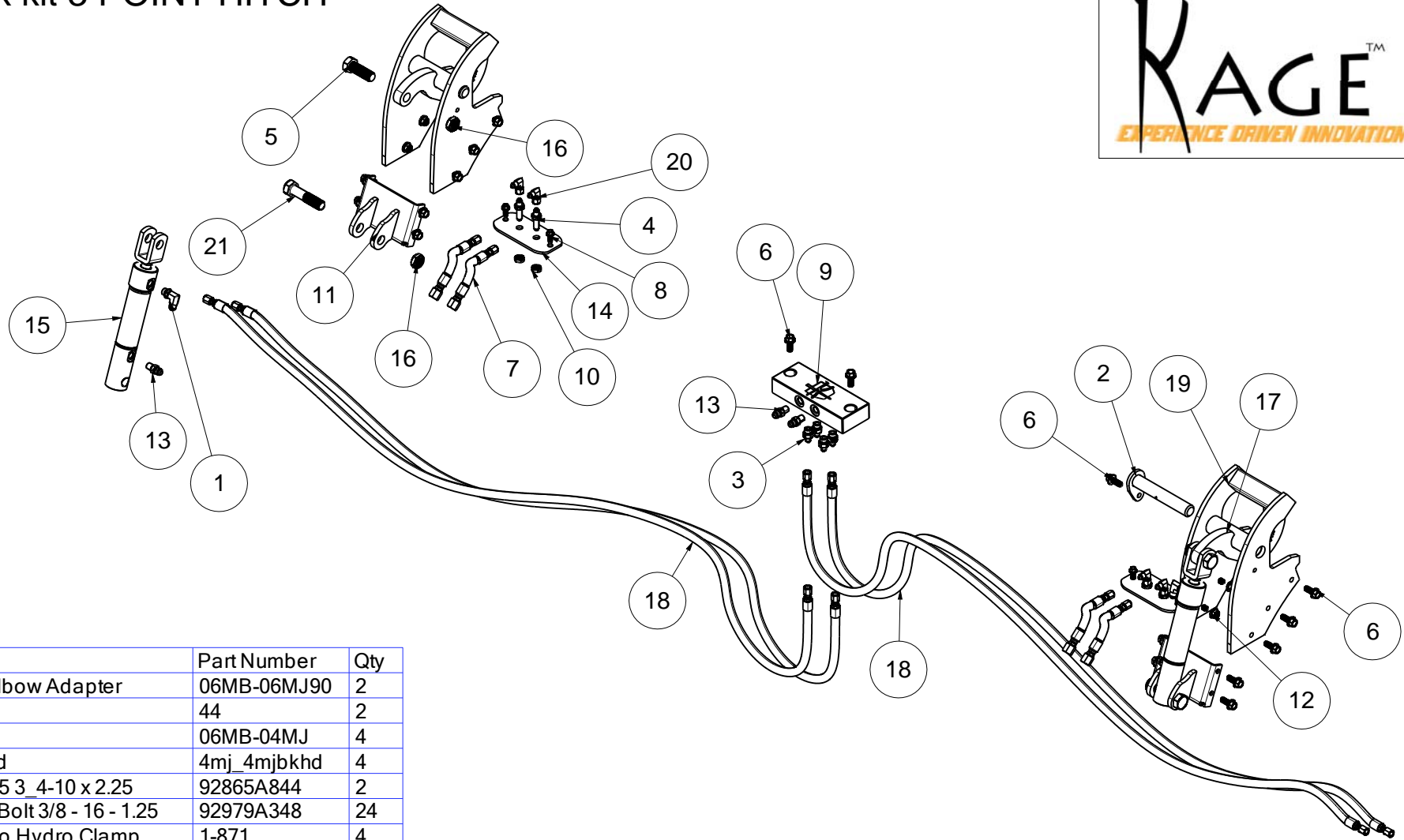


Item	Part Name	Part Number	Qty
1	PIN GROUP	44	2
2	JIC x ORB Elbow Adapter	06MB-06MJ90	2
3	Nipple	06MB-04MJ	4
4	Steel Line, Pivot Frame	785-2	2
5	JIC Bulkhead	4mj_4mjbkhd	4
6	Hex Bolt GR5 3_4-10 x 2.25	92865A844	2
7	Flange Hex Bolt 3/8 - 16 - 1.25	92979A348	24
8	Line, Blade to Hydro Clamp	1-871	4
9	JIC 90 Elbow	4mj_4fx90	4
10	Line, Pivot - Dist. Block	1-453	2
11	SELF TAPPER 5/16-18	90064A705	4
12	Beta Clamp Cap	BC2	1
13	Distribution Block	C11275	1
14	Bulkhead Nut GR5 7_16-20	94846A520	8
15	Beta Clamp Body	BC1	2
16	CYLINDER BRACKET	40	2
17	Flange Locknut, 3/8 -16	93298A130	12
18	Male JIC Bulkhead 45deg	4mj_4mjbkhd45	4
19	Hex Bolt GR5 3/8-16 x 3.25	91247A637	1
20	Hex Bolt GR8 3/4-10 x 3.25"	91257A848	2
21	Nipple	06MJ-06MP	4

Item	Part Name	Part Number	Qty
22	Line Cap	11-201	2
23	Hydro Lock Cylinder	BM-0413	2
24	GR5 Hex Nut Thin Nylock 3/4-10	91342A230	4
25	Clamp Group	387	2
26	Line, Dist Block to Bulkhead LG	1-670	4
27	TRACTOR BRACKET	094-2	2
28	Beta Clamp Riser	BC10	1

# Hydro Lock kit 3 POINT HITCH KTSBC3P

Version# 9

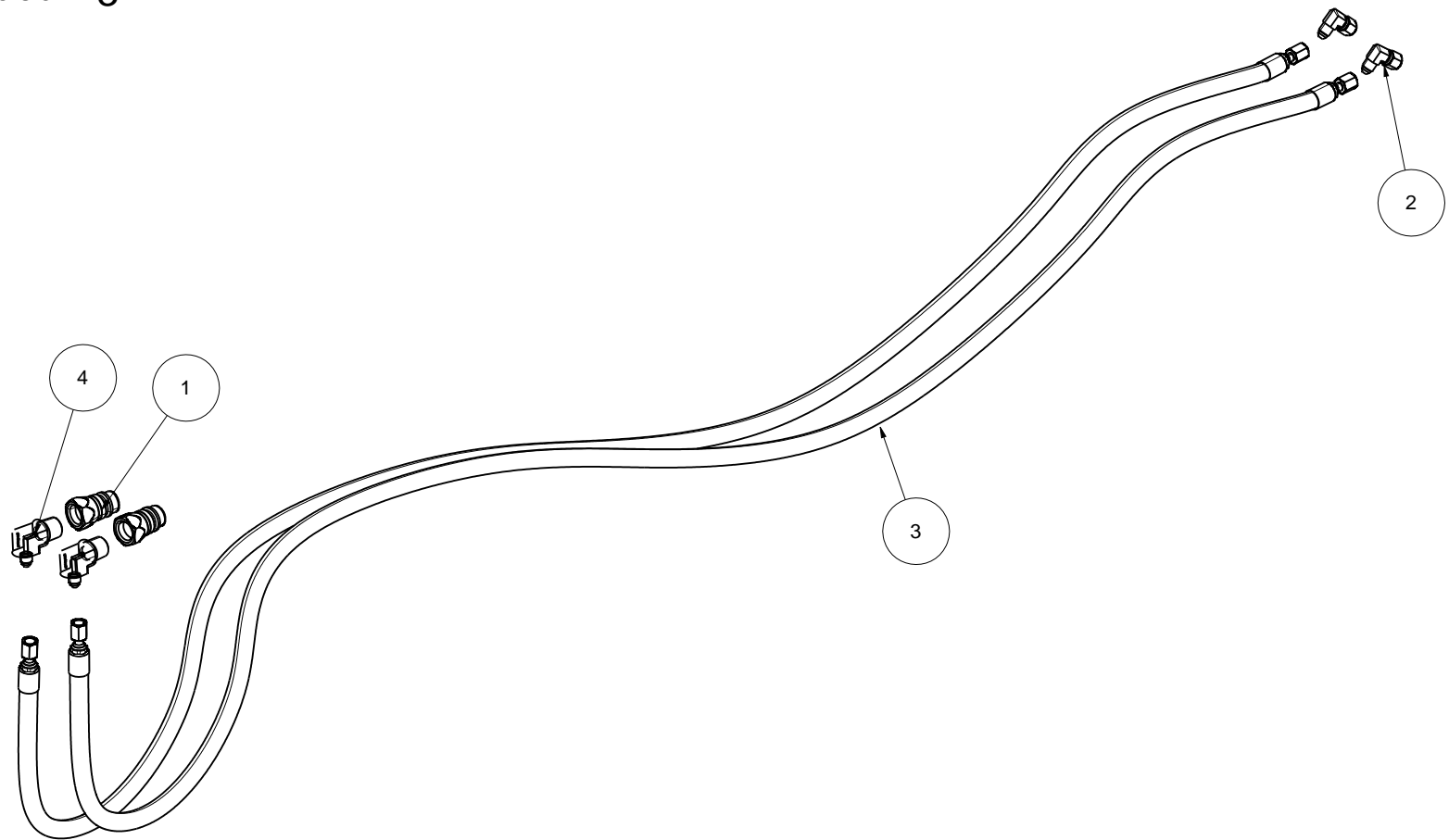


Item	Part Name	Part Number	Qty
1	JIC x ORB Elbow Adapter	06MB-06MJ90	2
2	PIN GROUP	44	2
3	Nipple	06MB-04MJ	4
4	JIC Bulkhead	4mj_4mjbkhd	4
5	Hex Bolt GR5 3_4-10 x 2.25	92865A844	2
6	Flange Hex Bolt 3/8 - 16 - 1.25	92979A348	24
7	Line, Blade to Hydro Clamp	1-871	4
8	SELF TAPPER 5/16-18	90064A705	4
9	Distribution Block	C11275	1
10	Bulkhead Nut GR5 7_16-20	94846A520	4
11	CYLINDER BRACKET	40	2
12	Flange Locknut, 3/8 -16	93298A130	12
13	Nipple	06MJ-06MP	4
14	Line Cap	11-201	2
15	Hydro Lock Cylinder	BM-0413	2

Item	Part Name	Part Number	Qty
16	GR5 Hex Nut Thin Nylock 3/4-10	91342A230	4
17	Clamp Group	387	2
18	Line, Dist Block to Bulkhead LG	1-670	4
19	TRACTOR BRACKET	094-2	2
20	JIC 90 Elbow	4mj_4fx90	4
21	Hex Bolt GR8 3/4-10 x 3.25"	91257A848	2

# Hydro Lock Adaptor SF to JD 4720 HLASF-JSK-4700

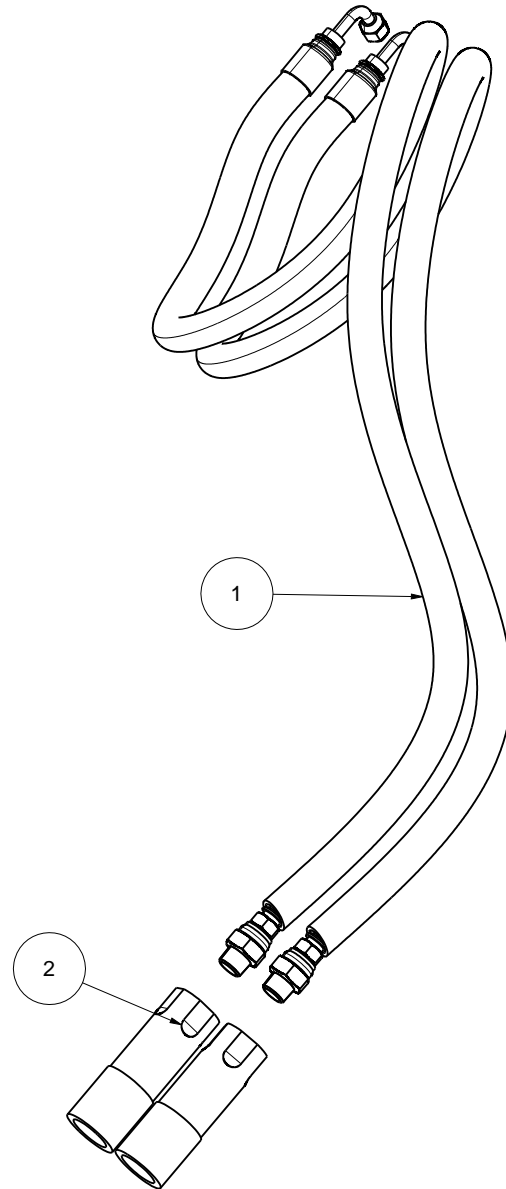
Version# 3



Item Number	Part Name	Part Number	Quantity
1	Male Ag Coupler	19-400	2
2	JIC 90 Elbow	4mj_4fx90	2
3	Line, Dist Block to Bulkhead LG	1-670	2
4	Male JIC x Male NPTF 90 Elbow	2501-04-08	2

# Hydro Lock Adaptor SF to KUB L Series HLASF-KSK-490

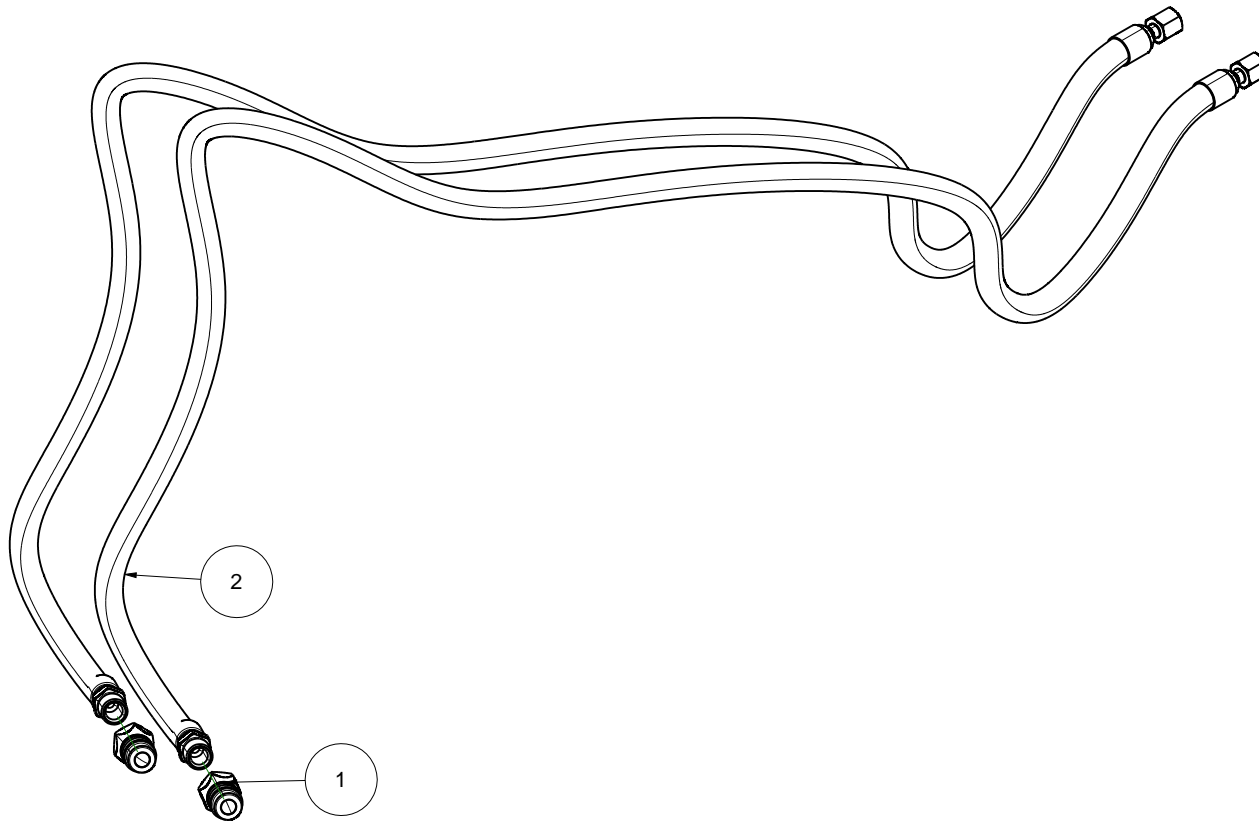
Version# 5



Item	Part Name	Part Number	Quantity
1	Line, Tractor to Pivot Frame	63-508	2
2	Hydro Coupler, Female	G94521-0606	2

# Hydro Lock Adaptor SF to 3 Point Hitch HLASF-3P

Version# 2



Item Number	Part Name	Part Number	Quantity
1	Male Ag Coupler	19-400	2
2	Line Valve to Dist. Block	1-765	2

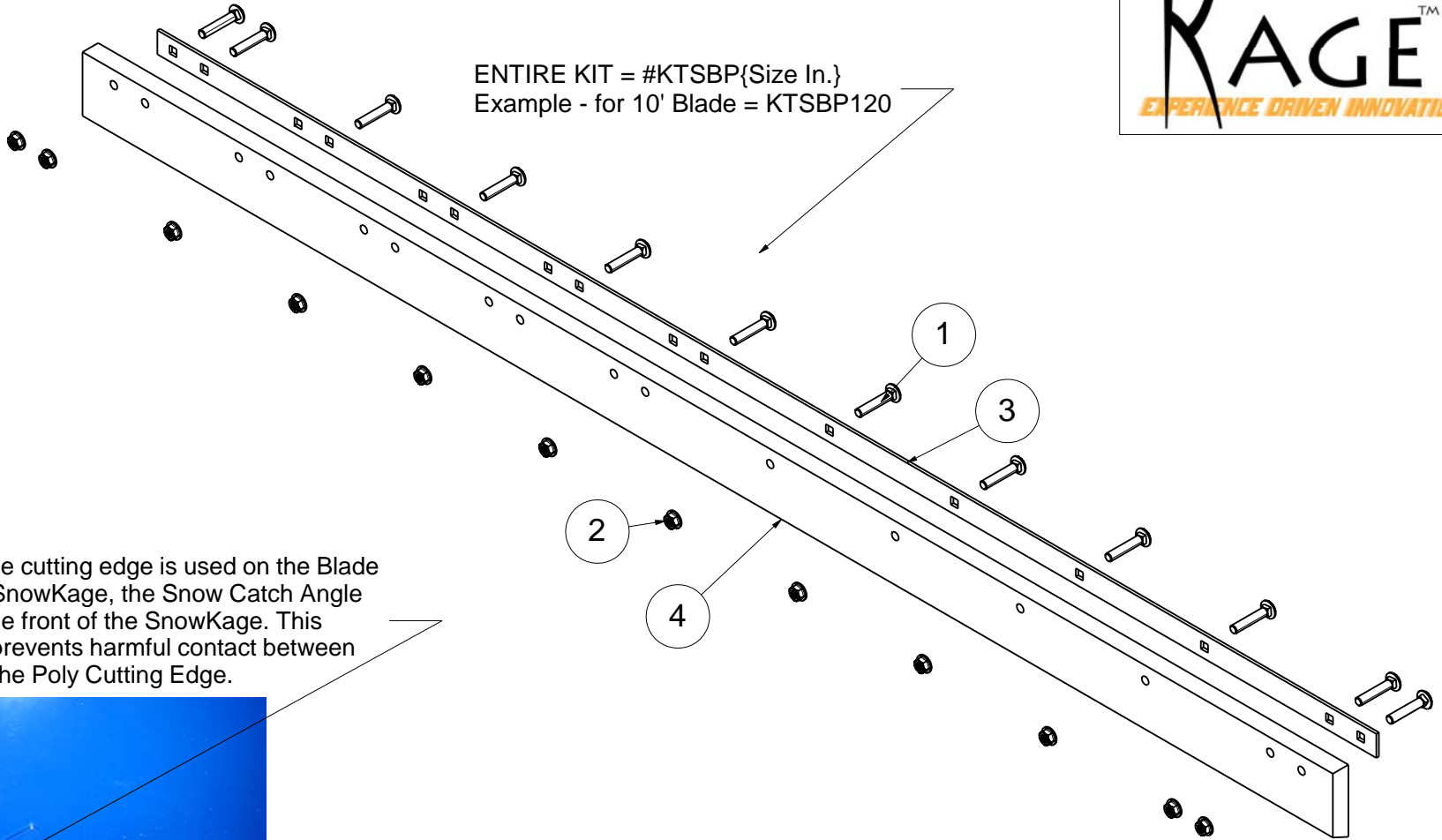


# Poly Cutting Edge Kit KTSBP120

Version# 29



ENTIRE KIT = #KTSBP{Size In.}  
Example - for 10' Blade = KTSBP120



Note: When the polyurethane cutting edge is used on the Blade and in conjunction with the SnowKage, the Snow Catch Angle must be adjusted towards the front of the SnowKage. This creates enough space and prevents harmful contact between the Snow Catch Angle and the Poly Cutting Edge.

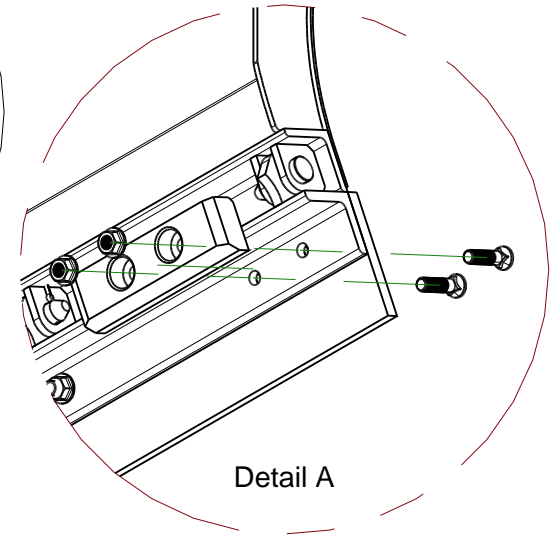
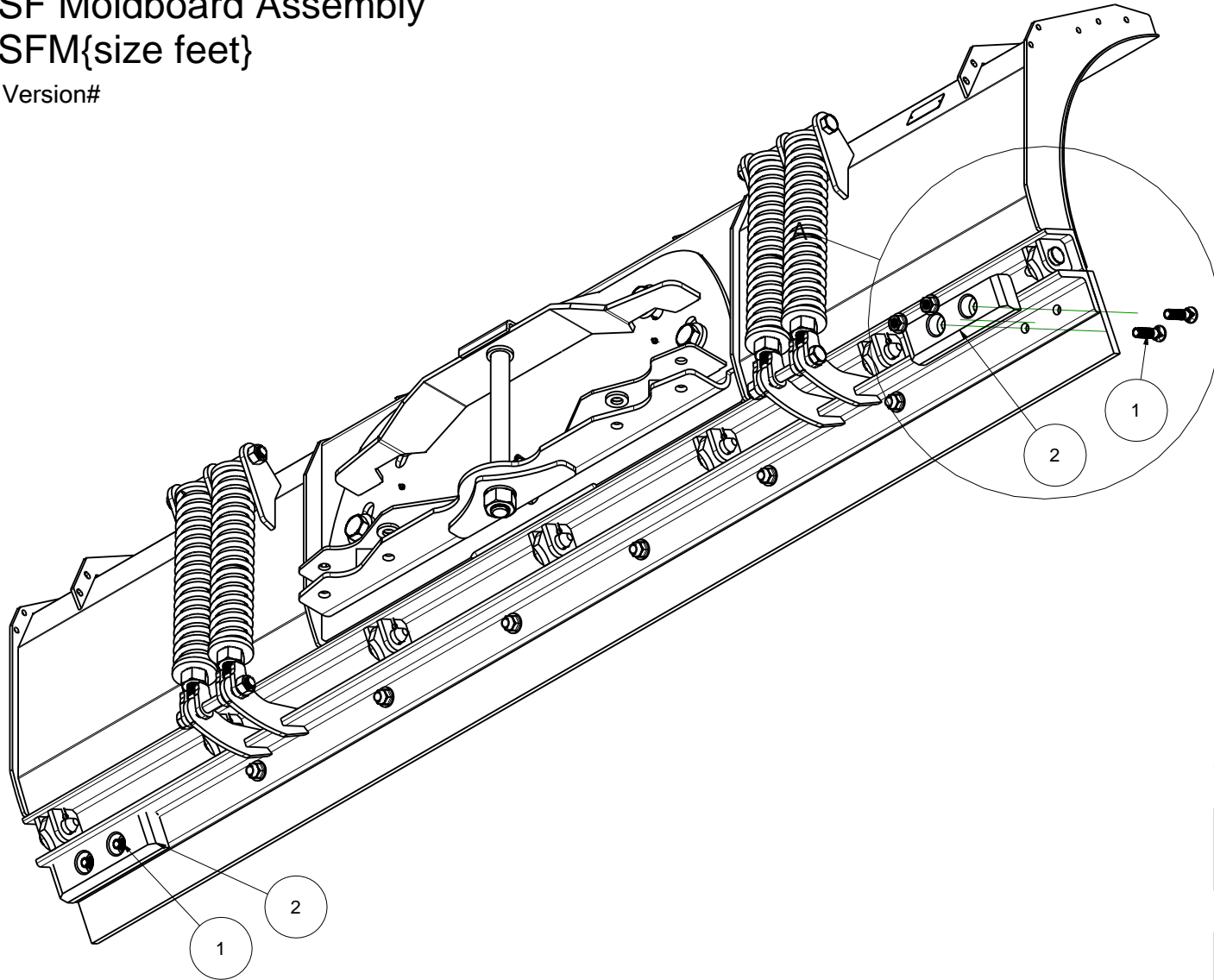


Item Number	Part Name	Part Number	Qty
1	Carriage Bolt, 5/8-11 x 3	90185A818	12
2	Flange Locknut 5/8-11	3221357	12
3	Universal Cutting Edge Support	556-PT-120	1
4	Poly Edge	PU-UNV1-120	1

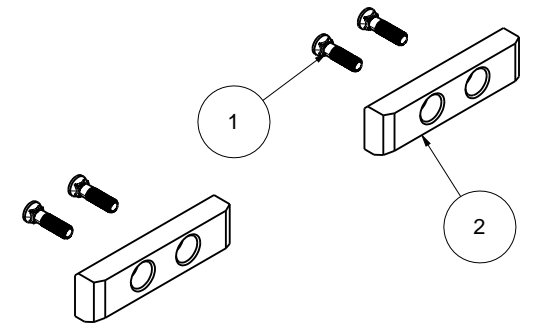
# SF Moldboard Assembly

## SFM{size feet}

Version#



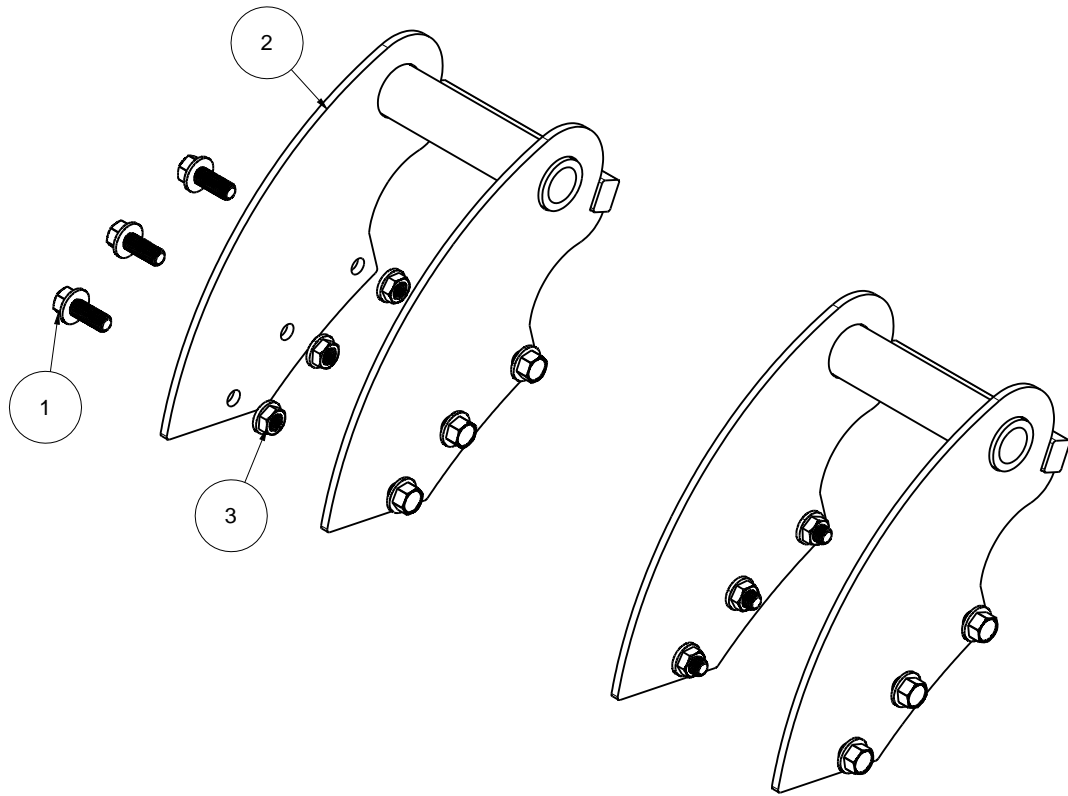
### Curb Guard Kit # KTCG180



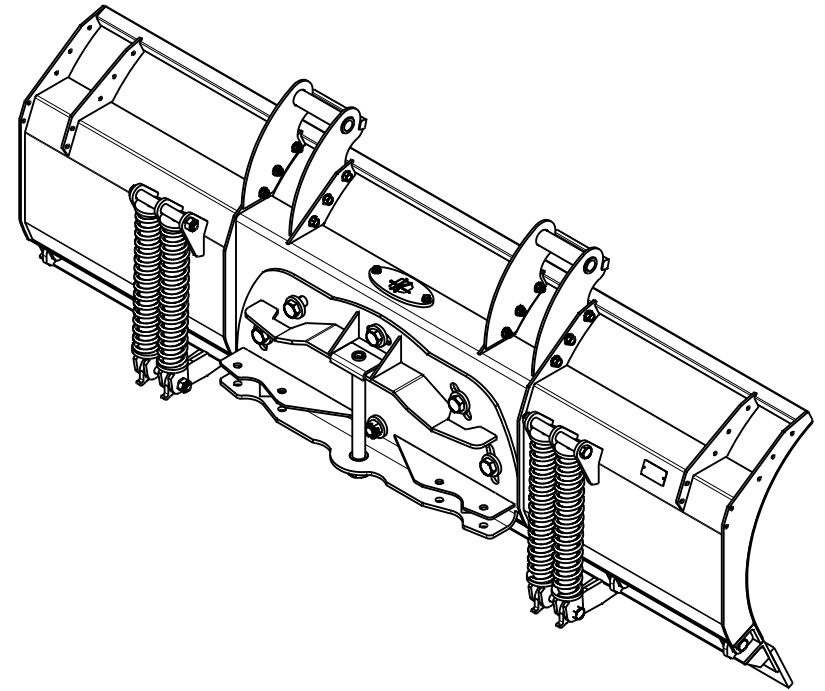
Item Number	Part Name	Part Number	Quantity
1	Hex Bolt 5-8 - 11 x 2 1-2	90934A804	4
2	SF Curb Guard	100-11	2

# Kage Blade Cam-Lock Bracket Kit KTKBB-2

Version#



Install Cam-lock Brackets in this orientation

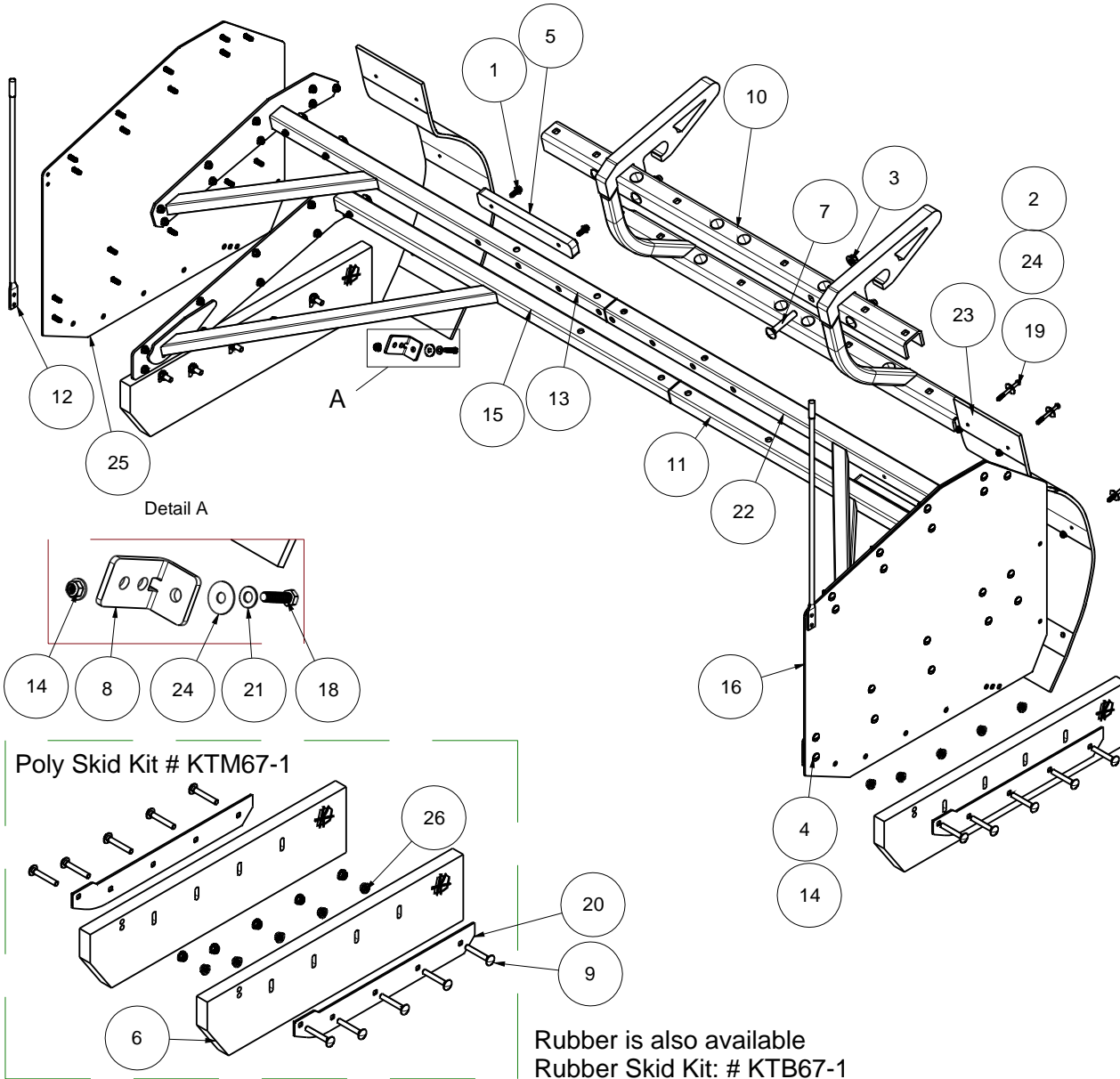


Item Number	Part Name	Part Number	Quantity
1	Flange Hex Bolt Grade 5 1/2 - 13 x 1.25	92979A467	12
2	Kage Blade Cam-Lock Bracket	KBB-2	2
3	Flange Locknut 1/2 - 13	RF1213OFZ	12

# SnowKage Assembly Complete SK2011-{Nominal Size Inches}

Version# 57

Use this break down when ordering parts  
if your Kage's serial # is lower than;  
SK2011 124-10999



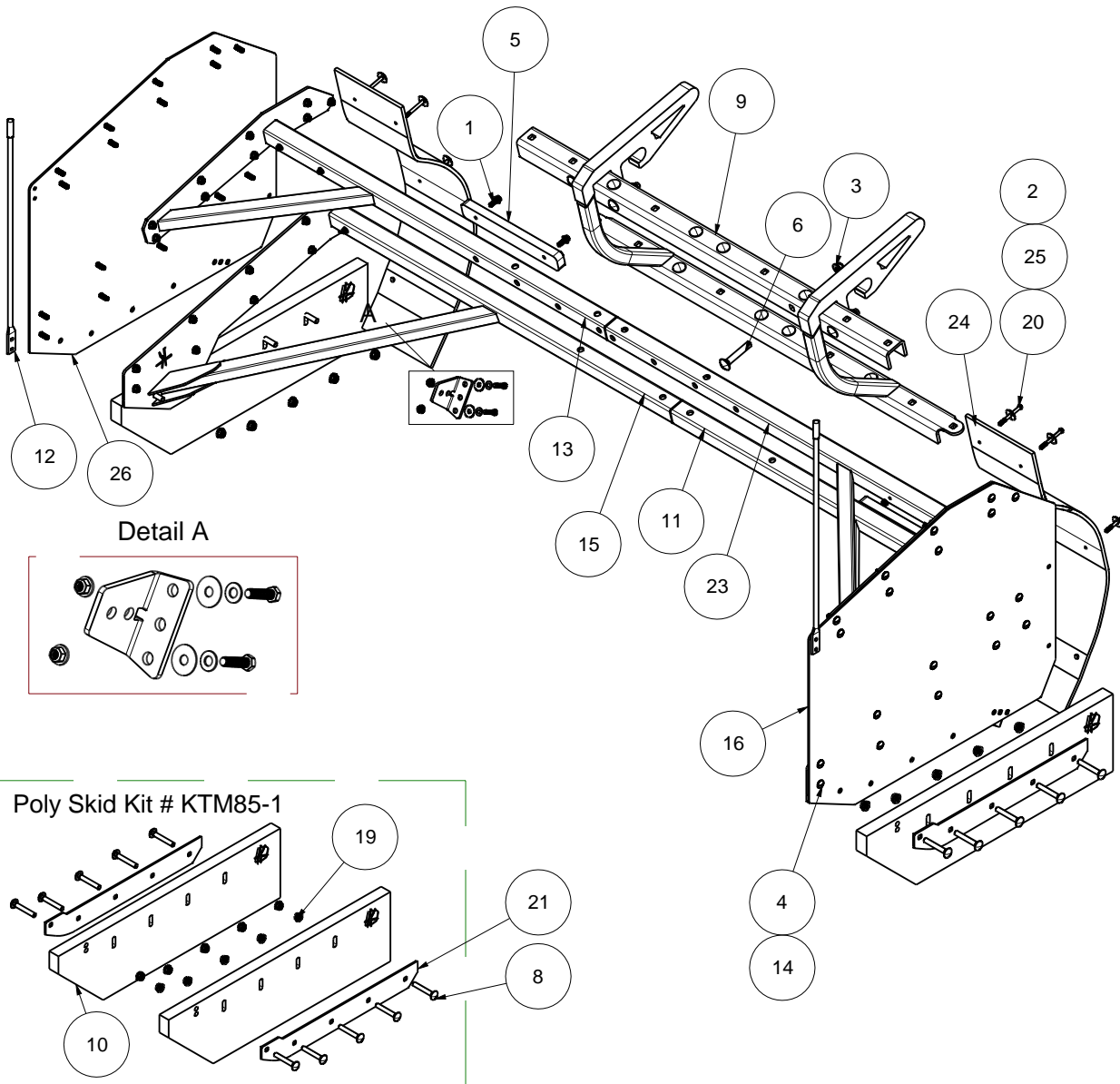
Item	Part Name	Part Number	Qty
1	Flange Hex Bolt, 3/8 - 16 x 1	92979A344	4
2	Flange Locknut 5/16-18	92018A320	6
3	Flange Locknut 5/8-11	3221357	12
4	Carriage Bolt GR5, 3/8 - 16 * 1	ROC-2131-624	38
5	Isolator	N24-2	2
6	Poly Skid	N36-2	2
7	Carriage Bolt, 5/8-11 x 3.5"	90185A822	12
8	Snow Catch Angle	223-2R	2
9	Carriage Bolt GR5 1/2-13 x 3	ROC-2131-724	10
10	Center Group	100-504	1
11	BDS Weldment	BDS-1	1
12	Plow Guide	W-1578	2
13	TPS Weldment	TPS-1	1
14	Flange Locknut, 3/8 -16	93298A130	40
15	BPS Weldment	BPS-1	1
16	Side Panel Driver	363-2-D	1
17	Name Plate	KAGE001-11399-2	1
18	Hex Bolt GR5 3/8-16 x 1.5	92865A628	2
19	Hex Bolt, 5/16 - 18 x 3	91247A595	6
20	Poly Support	022-2	2
21	Flat Washer, 3_8	ROC-8071-031	2
22	TDS Weldment	TDS-1	1
23	Snow Catch	N42-2	2
24	Fender Washer, 3/8	91090A121	8
25	Side Panel Passenger	363-2-P	1
26	Flange Locknut 1/2 - 13	RF1213OFZ	10

Rubber is also available  
Rubber Skid Kit: # KTB67-1

# SnowKage Assembly Complete SK2011-{Nominal Size Inches}

Version#

This model has taller skids than previous models to accommodate the latest Kage Blade revision. Use this break down when ordering parts if your Kage's serial # is higher than; SK2011 124-10998

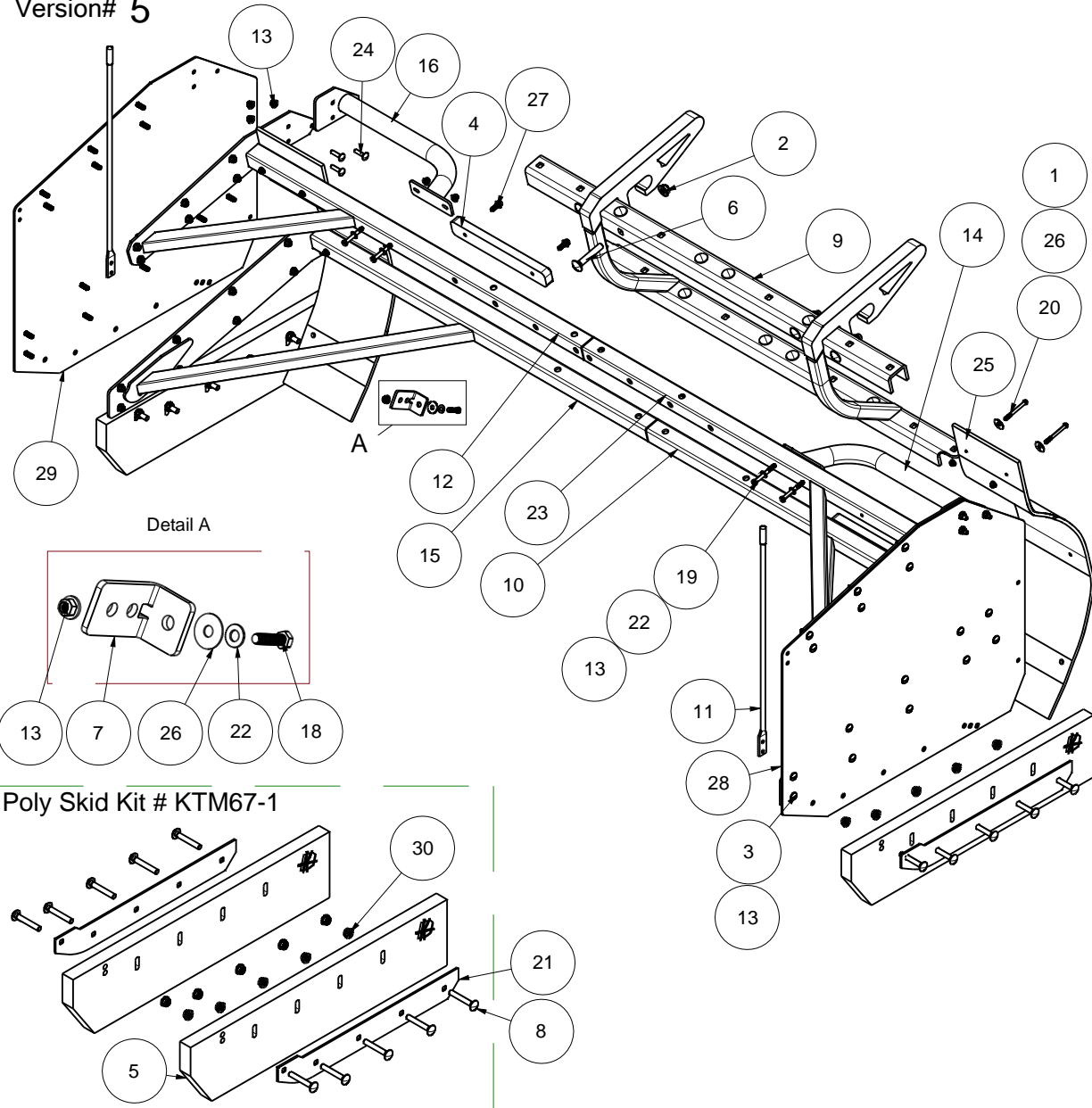


Item	Part Name	Part Number	Qty
1	Flange Hex Bolt, 3/8 - 16 x 1	92979A344	4
2	Flange Locknut 5/16-18	92018A320	6
3	Flange Locknut 5/8-11	3221357	12
4	Carriage Bolt GR5, 3/8 - 16 * 1	ROC-2131-624	38
5	Isolator	N24-2	2
6	Carriage Bolt, 5/8-11 x 3.5"	90185A822	12
7	Snow Catch Angle	223-2R	2
8	Carriage Bolt GR5 1/2-13 x 3	ROC-2131-724	10
9	Center Group	100-504	1
10	Poly Skid T	N80-2	2
11	BDS Weldment	BDS-1	1
12	Plow Guide	W-1578	2
13	TPS Weldment	TPS-1	1
14	Flange Locknut, 3/8 -16	93298A130	42
15	BPS Weldment	BPS-1	1
16	Side Panel Driver	363-2-D	1
17	Name Plate	KAGE001-11399-2	1
18	Hex Bolt GR5 3/8-16 x 1.5	92865A628	4
19	Flange Locknut 1/2 - 13	RF1213OFZ	10
20	Hex Bolt, 5/16 - 18 x 3	91247A595	6
21	Poly Support	022-2	2
22	Flat Washer, 3_8	ROC-8071-031	4
23	TDS Weldment	TDS-1	1
24	Snow Catch	N42-2	2
25	Fender Washer, 3/8	91090A121	10
26	Side Panel Passenger	363-2-P	1

# SF2011 Tractor SnowKage Assembly Complete SK2011-{Nominal Size Inches}

Version# 5

Use this break down when ordering parts  
if your Kage's serial # is lower than;  
SK2011 124-10999

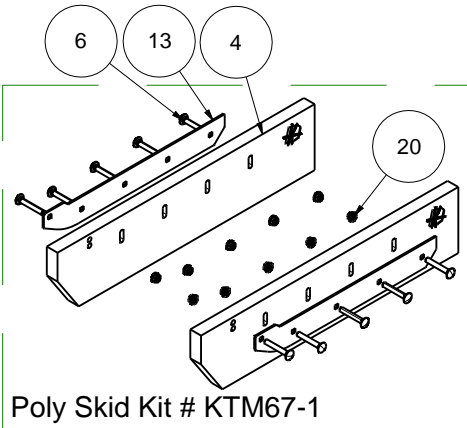
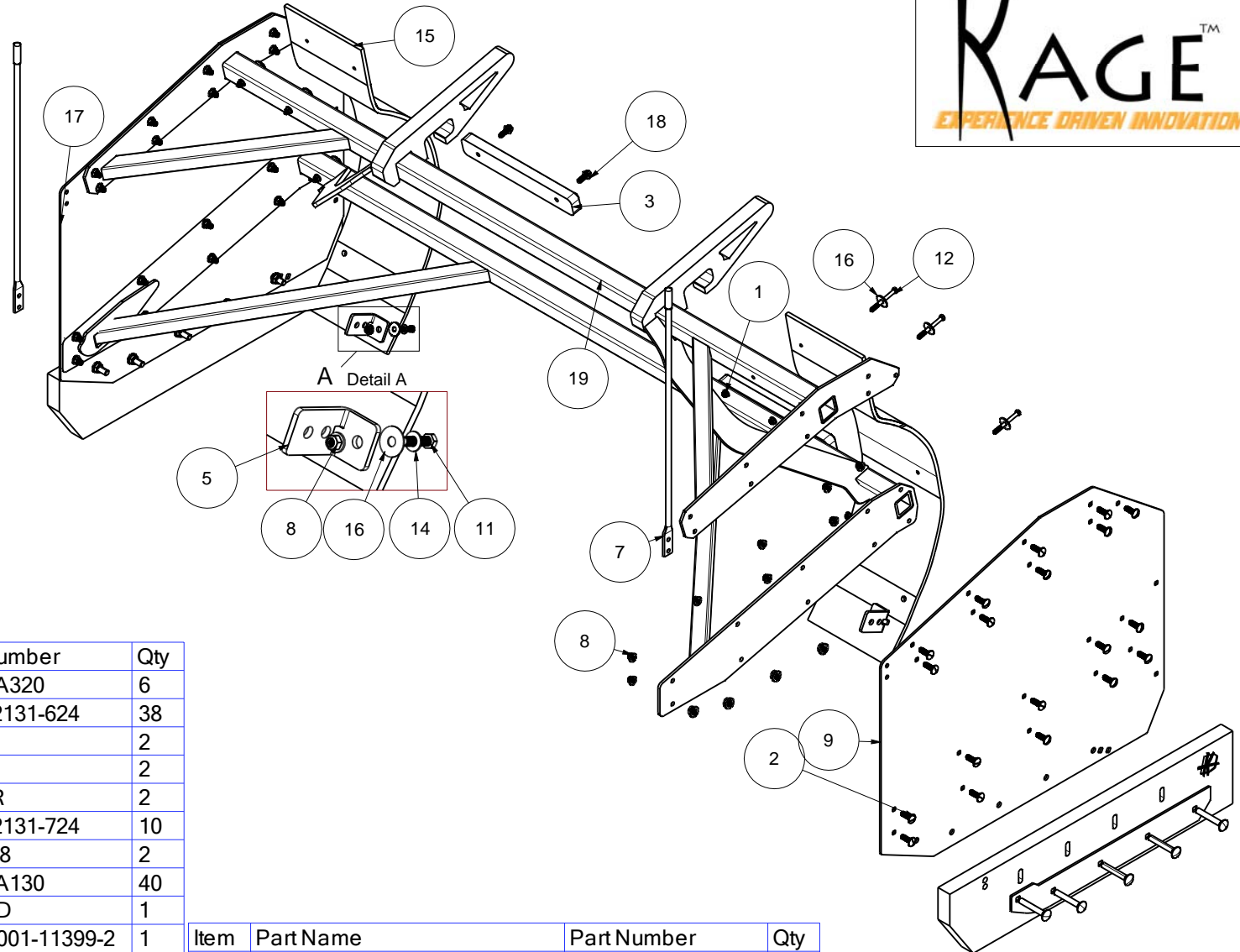


Item	Part Name	Part Number	Qty
1	Flange Locknut 5/16-18	92018A320	6
2	Flange Locknut 5/8-11	3221357	12
3	Carriage Bolt GR5, 3/8 - 16 * 1	ROC-2131-624	32
4	Isolator	N24-2	2
5	Poly Skid	N36-2	2
6	Carriage Bolt, 5/8-11 x 3.5"	90185A822	12
7	Snow Catch Angle	223-2R	2
8	Carriage Bolt GR5 1/2-13 x 3	ROC-2131-724	10
9	Center Group	100-504	1
10	BDS Weldment	BDS-1	1
11	Plow Guide	W-1578	2
12	TPS Weldment	TPS-1	1
13	Flange Locknut, 3/8 -16	93298A130	44
14	Tractor Tube, Driver	567-Driver	1
15	BPS Weldment	BPS-1	1
16	Tractor Tube, Passenger	567-Passenger	1
17	Name Plate	KAGE001-11399-2	1
18	Hex Bolt GR5 3/8-16 x 1.5	92865A628	2
19	Hex Bolt GR5 3/8-16 x 3	91257A636	4
20	Hex Bolt, 5/16 - 18 x 3	91247A595	6
21	Poly Support	022-2	2
22	Flat Washer, 3_8	ROC-8071-031	6
23	TDS Weldment	TDS-1	1
24	Carriage Bolt GR5 3/8-16 x 1.25	ROC-2131-626	6
25	Snow Catch	N42-2	2
26	Fender Washer, 3/8	91090A121	8
27	Flange Hex Bolt, 3/8 - 16 x 1	92979A344	4
28	Side Panel Driver	363-2-D	1
29	Side Panel Passenger	363-2-P	1
30	Flange Locknut 1/2 - 13	RF1213OFZ	10

# SnowKage Assembly Complete 6 SK72

Version# 12

Use this break down when ordering parts if your Kage's serial # is lower than; SK72 102-52316



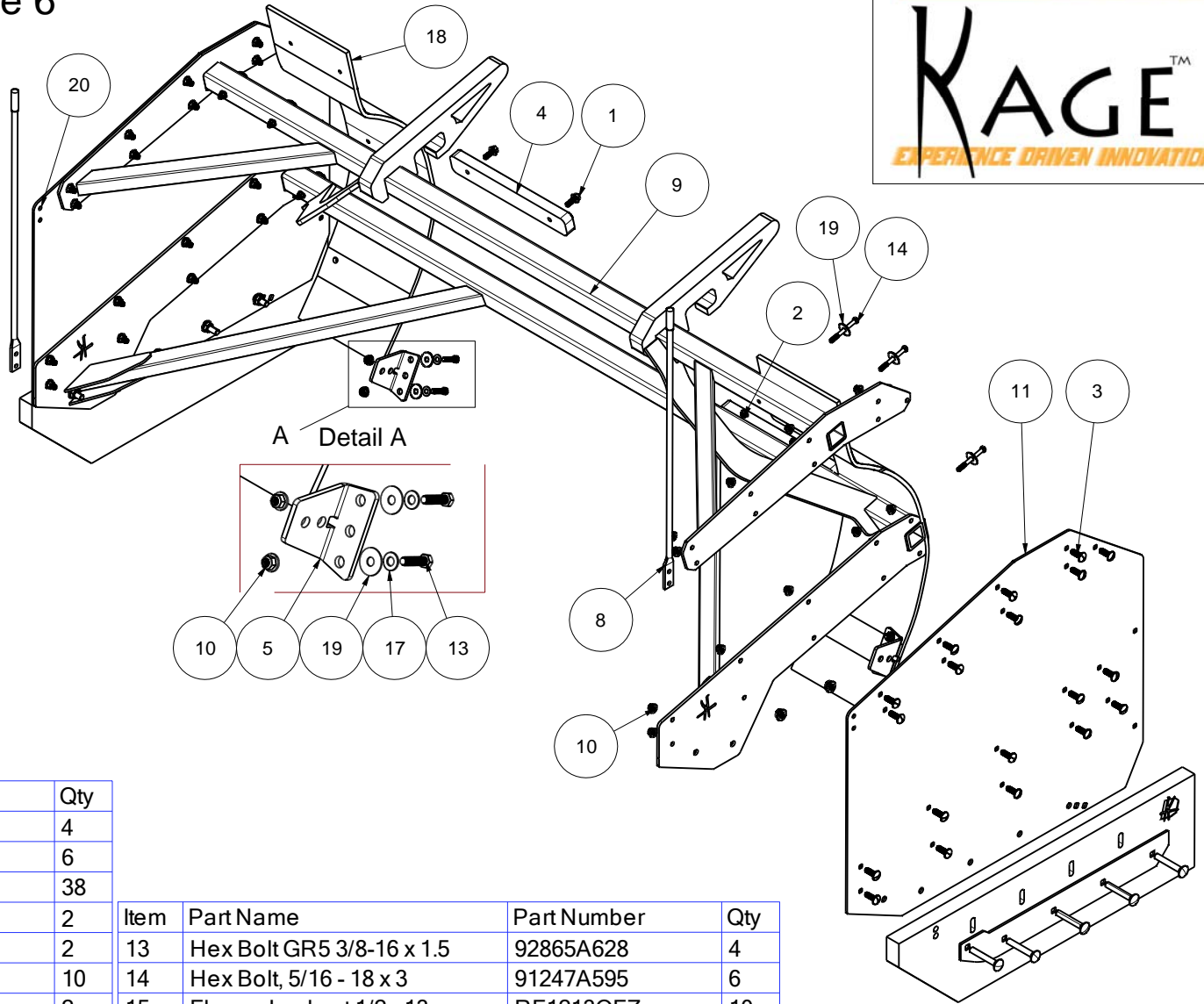
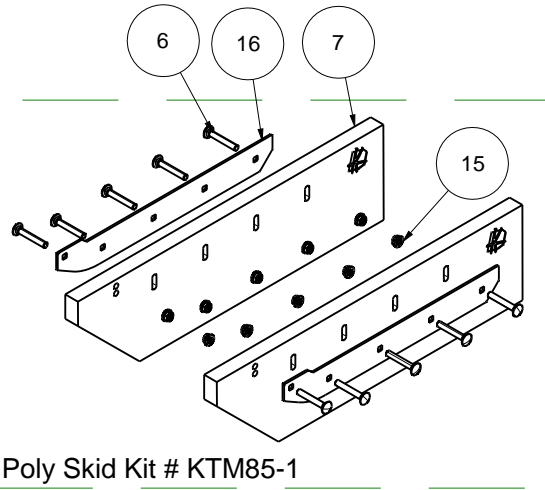
Item	Part Name	Part Number	Qty
1	Flange Locknut 5/16-18	92018A320	6
2	Carriage Bolt GR5, 3/8 - 16 x 1	ROC-2131-624	38
3	Isolator	N24-2	2
4	Poly Skid	N36-2	2
5	Snow Catch Angle	223-2R	2
6	Carriage Bolt GR5 1/2-13 x 3	ROC-2131-724	10
7	Plow Guide	W-1578	2
8	Flange Locknut, 3/8 -16	93298A130	40
9	Side Panel Driver	363-2-D	1
10	Name Plate	KAGE001-11399-2	1
11	Hex Bolt GR5 3/8-16 x 1.5	92865A628	2
12	Hex Bolt, 5/16 - 18 x 3	91247A595	6
13	Poly Support	022-2	2
14	Flat Washer, 3_8	ROC-8071-031	2
15	Snow Catch	N42-2	2

Item	Part Name	Part Number	Qty
16	Fender Washer, 3/8	91090A121	8
17	Side Panel Passenger	363-2-P	1
18	Flange Hex Bolt, 3/8 - 16 x 1	92979A344	4
19	SnowKage Frame 72	SKFrame72	1
20	Flange Locknut 1/2 - 13	RF1213OFZ	10

# SnowKage Assembly Complete 6 SK72

Version# 14

This model has taller skids than previous models to accommodate the latest Kage Blade revision. Use this break down when ordering parts if your Kage's serial # is higher than; SK72 102-52315



Item	Part Name	Part Number	Qty
1	Flange Hex Bolt, 3/8 - 16 x 1	92979A344	4
2	Flange Locknut 5/16-18	92018A320	6
3	Carriage Bolt GR5, 3/8 - 16 * 1	ROC-2131-624	38
4	Isolator	N24-2	2
5	Snow Catch Angle	223-2R	2
6	Carriage Bolt GR5 1/2-13 x 3	ROC-2131-724	10
7	Poly Skid T	N80-2	2
8	Plow Guide	W-1578	2
9	SnowKage Frame 72	SKFrame72	1
10	Flange Locknut, 3/8 -16	93298A130	42
11	Side Panel Driver	363-2-D	1
12	Name Plate	KAGE001-11399-2	1

Item	Part Name	Part Number	Qty
13	Hex Bolt GR5 3/8-16 x 1.5	92865A628	4
14	Hex Bolt, 5/16 - 18 x 3	91247A595	6
15	Flange Locknut 1/2 - 13	RF1213OFZ	10
16	Poly Support	022-2	2
17	Flat Washer, 3_8	ROC-8071-031	4
18	Snow Catch	N42-2	2
19	Fender Washer, 3/8	91090A121	10
20	Side Panel Passenger	363-2-P	1



## SnowKage Cam-Lock Bracket Installation Instructions For BOSS® and Falls® Plows

1. Attach snow plow to skid steer. Position the moldboard straight.
2. Position Cam-Lock brackets on the back radius of the moldboard, pushed up against the top front most support channel of the plow (Fig. A). The center of the Cam-Lock bracket should be 16.5" away from the centerline of the plow moldboard (Fig B). Hold them in place using a C clamp, vise grip, or the likes.
3. Mark the center of the holes in the Cam-Lock bracket on the moldboard of the plow using a 3/8" drill bit or center punch.
4. Drill pilot holes in the moldboard using a 3/16" drill bit. Finish holes with a 3/8" drill bit. Paint or silicone holes in moldboard to prevent rust.
5. Bolt Cam-Lock brackets firmly into place using the gr 5 1½" x 3/8 bolts, with the bolt head and large washer on the front side of the moldboard.

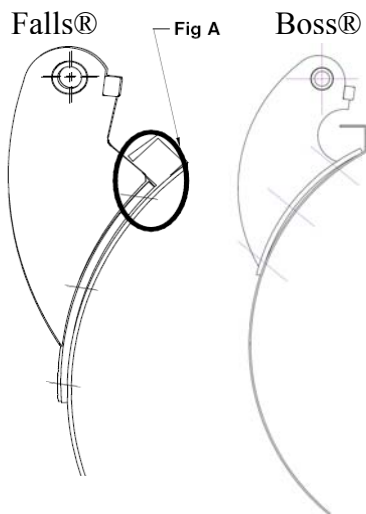
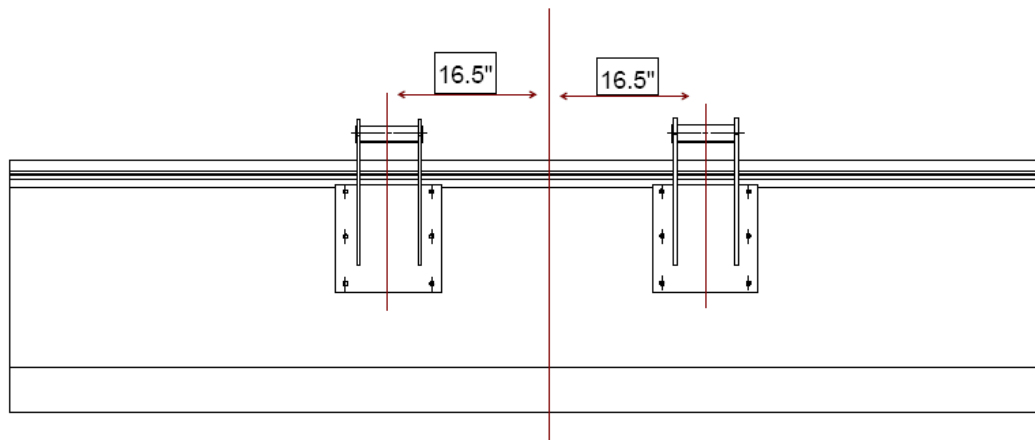


Fig B





## **Operator Instructions**

**To release** the SnowKage raise boom approximately 5', tilt plow down until Kage box unit swings freely (must tilt approximately 50 – 60 degrees). Gently set Kage box down using the *vertical* motion of the boom, (rather than the curling motion of the attachment plate).

**To attach** the SnowKage, raise boom approximately 5', tilt plow down until the Snow Kage plow hooks become visible. Align, and position plow brackets underneath mating hooks of the SnowKage. Using *vertical* motion of boom, pick up the SnowKage, *then* curl the plow back into normal position.

**Rubber/Poly Wear Edges** only need to be replaced or adjusted when cutting edge of plow is replaced/adjusted. Replacement wearable parts can be purchased by calling Kage Innovation at 844-314-KAGE.

**Down Pressure on plow** is still possible. However, operator must not lift front wheels of machine off the pavement excessively (when the SnowKage is attached to the plow), as this could result in unwanted leakage of snow from edges of plow

**Rough terrain** should be avoided at high speeds (when the SnowKage is attached to the plow), as this can cause excessive bounce, simulating 'release tilt' necessary to release the SnowKage.