



Owners Manual

Wheel Kaddy

Kage InnovationTM LLC
5302 Stagecoach Tr. Oak Park Heights, MN 55082
kageinnovation.com
(844) 314 – KAGE



Kage Limited Warranty

Kage Innovation will repair or, at the option of Kage Innovation, replace those parts which prove defective due to material or workmanship under normal use for a period of two (2) years from the date of retail sale or date of invoice from Kage Innovation, whichever is later. Expendable items, such as rubber, or polyurethane are excluded from this warranty.

Kage Innovation warrants that the products manufactured by us to be in accordance with our published specifications or those specifications agreed to by us in writing at the time of sale. The obligation of Kage Innovation is expressly limited to repairing or replacing, at its option, any product not meeting such specifications within the warranty period.

LIMITATIONS OF WARRANTY AND DAMAGES

KAGE INNOVATION MAKES NO OTHER WARRANTY, EXPRESSED OR IMPLIED, AND MAKES NO WARRANTY OF MERCHANTABILITY OR OF FITNESS FOR ANY PARTICULAR PURPOSE. THERE ARE NO WARRANTIES WHICH EXTEND BEYOND THE FACE HEREOF.

IN NO EVENT SHALL KAGE INNOVATION, BE HELD LIABLE FOR SPECIAL, INCIDENTAL OR CONSEQUENTIAL DAMAGES OR FOR DAMAGES RESULTING FROM MISAPPLICATION, ABUSE, MISUSE, ACTS OF GOD, UNAUTHORIZED ALTERATION OF THE KAGE INNOVATION PRODUCT, OR SUBSTITUTION OF PARTS NOT AUTHORIZED IN WRITING BY KAGE INNOVATION.

To obtain service under this warranty the consumer must return the defective Kage Innovation product to Kage Innovation directly, the dealer from which the product was purchased or to any authorized Kage Innovation dealer, transportation and freight charges prepaid. Only Kage Innovation dealers are authorized to perform the obligations under this warranty with pre-authorization from Kage Innovation.

No person is authorized to alter or amend this warranty or to create any warranty other than that set forth herein without the expressed written consent of Kage Innovation.

Kage Innovation reserves the right to make improvement changes on any of our products without prior notice.

Installation Instructions



Install mount with bolts provided. If the universal mount is being used, please refer to the “Top Height Adjustment” page of this owners manual for proper mounting height.



Install quick release arm assembly



Install wheels on platform.

NOTE: When using the 3-piece wheel assemblies make sure that the grease seal is fully seated onto the axle shoulder. There should be a very small gap between the platform and tire as shown.





Install tapered roller bearing at the front.
Install Castle Nut.



Install Tang washer



Carefully tighten castle nut. Tighten enough to snug up the bearings without causing unnecessary friction. Wheel must spin freely. Once the proper torque is obtained install cotter pin through the axle to secure the castle nut.



Align the tab on the Tang Washer with the closest opening on the Slotted Nut. Make sure that the nut is holding the wheel snugly, and bend the tab of the Tang Washer down into the slot. This will prevent loosening of the nut.

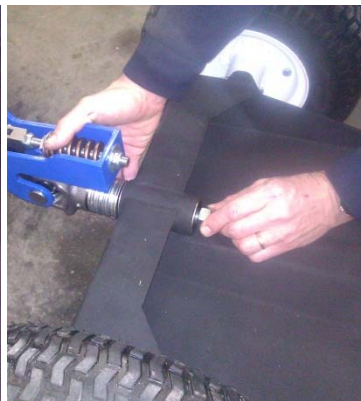




Carefully tap hub cap into place with rubber mallet.

Follow the same procedure for each wheel.

NOTE: Using a large impact socket over the dust cap during installation can help prevent damage from the hammer.

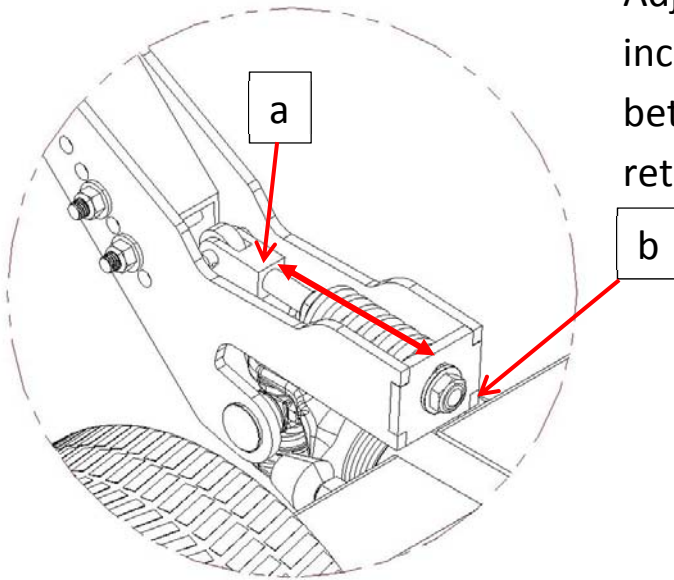


Install Kaddy platform. Loosely thread on end nut to temporarily secure.



Turn Kaddy to the side to check for clearance against the machine and the tire. If there is contact between the machine and the Kaddy before it reaches 90 degrees, adjust the placement of two bolts shown to increase the distance between the tire and machine.

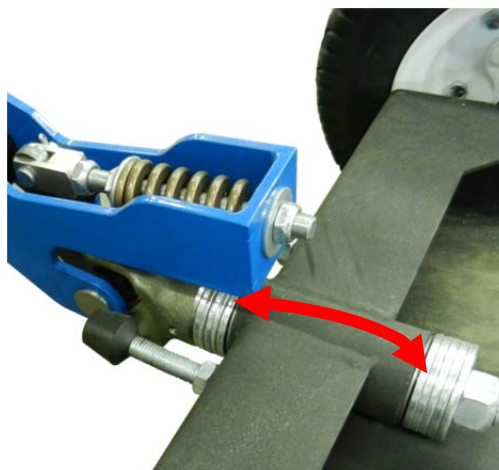




Adjust the pitch (level) of the platform by increasing or decreasing the distance between the clevis(a) and the spring retaining nut(b).



Adjust spring tension for operator weight by turning the tension nut as shown.

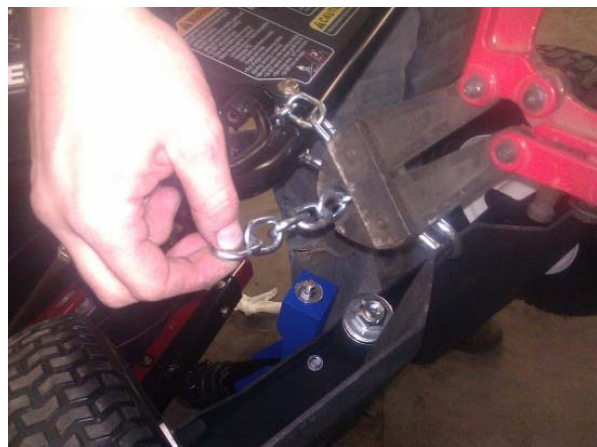


Further adjust the distance from the controls by moving washers from the front to the back as needed. NOTE: the further the platform is back, the easier it is to back up without jack-knifing. DO NOT over-tighten locking nut.





Install stops on platform and adjust as shown.

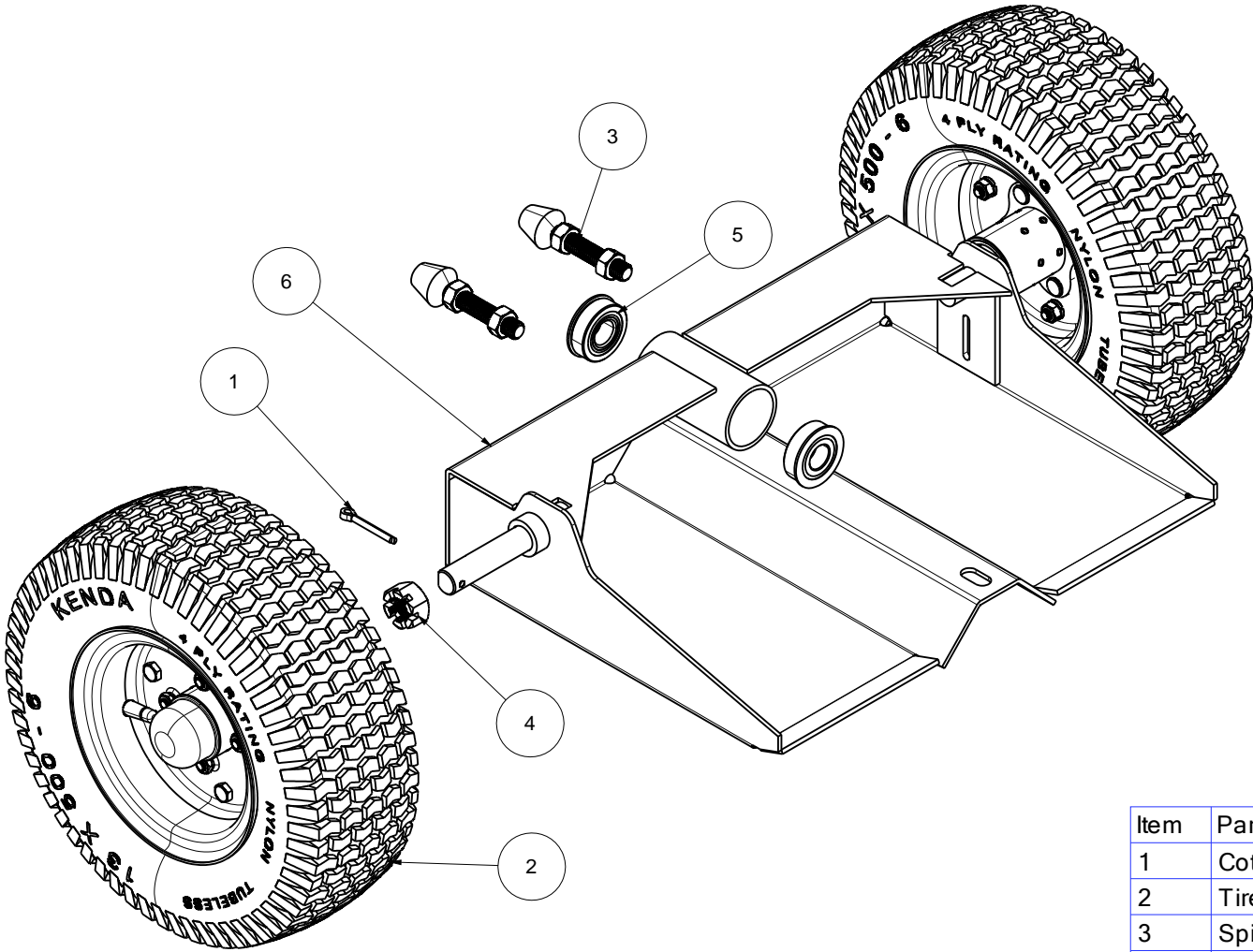


Thread chain through handlebars, and hook together with the hook provided. Be sure that the proper length is obtained and then clip off excess chain.



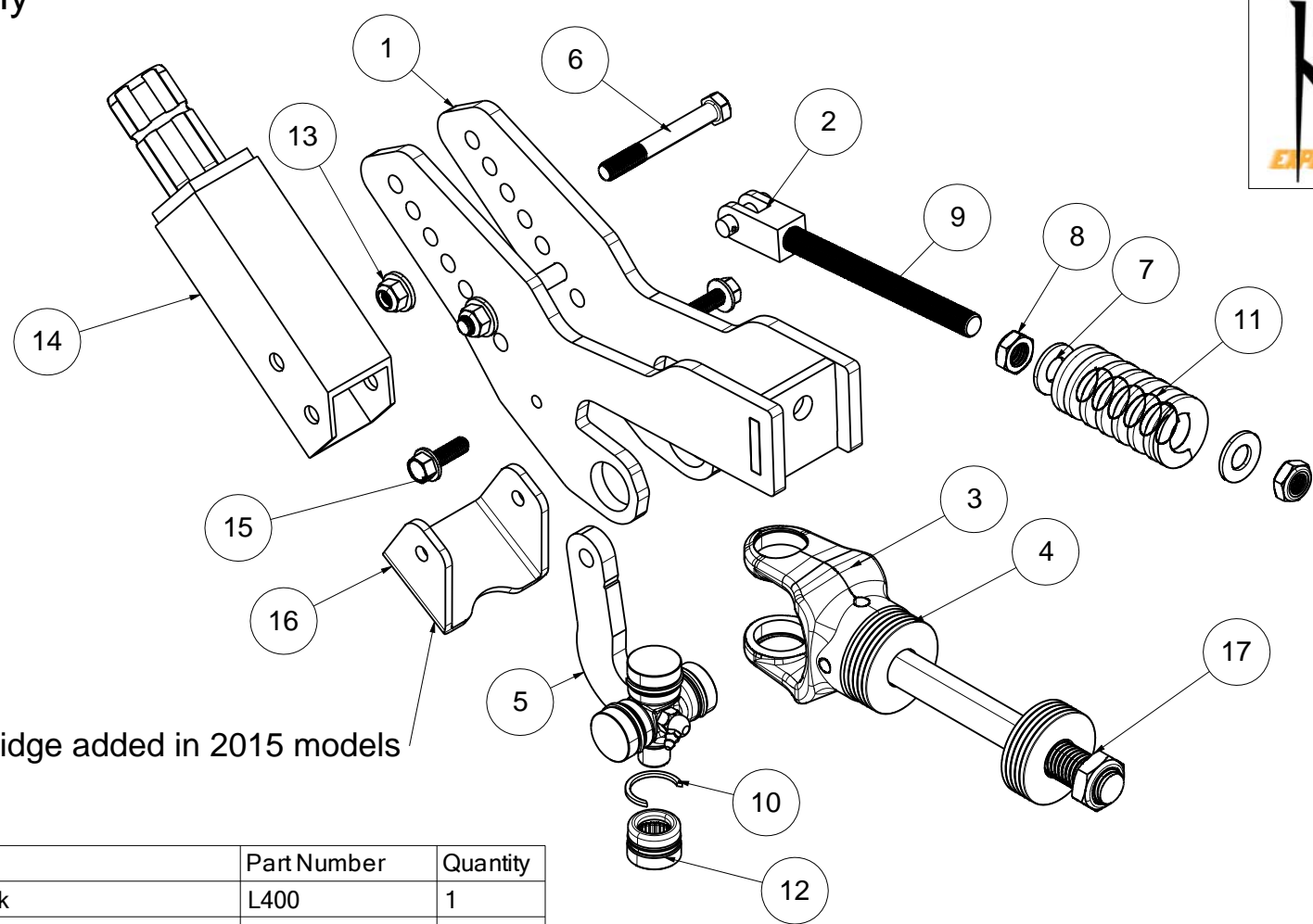
Wheel Kaddy Platform Assembly WHK-500

Version# 31



Item	Part Name	Part Number	Quantity
1	Cotter Pin, 5_32_ x 1.25	98338A492	2
2	Tire and Rim Assembly	506DBTR34-KI	2
3	Spindle	5147A690	2
4	Slotted Nut 3/4-16	95030A270	2
5	Flange Ball Bearing	6384K369	2
6	Base Weldment	WB-100	1
7	14_ Chain	3596T241-K67	1
8	Carabiner Hook	3885T21	1

Arm Assembly
ARM500
Version# 16

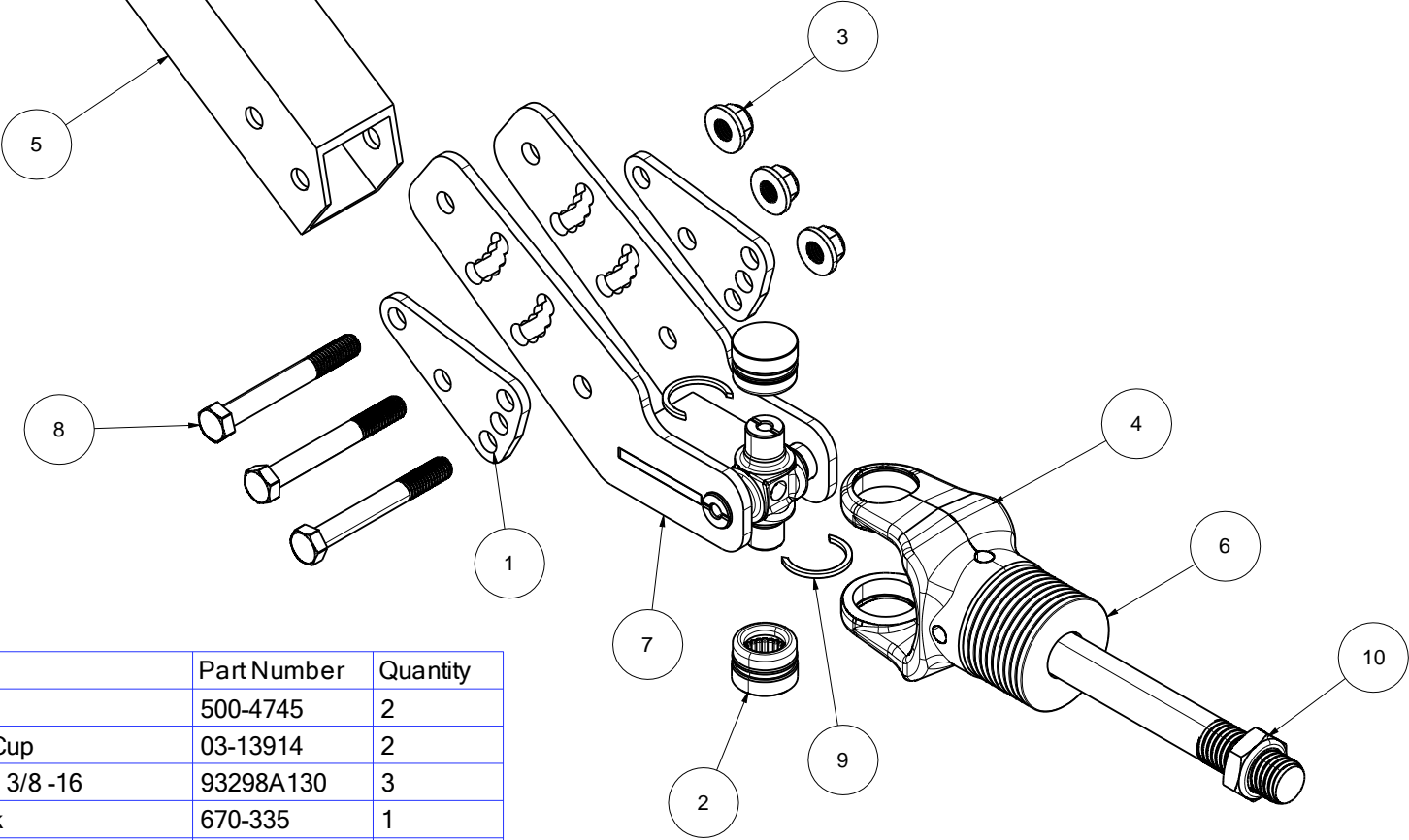


Formed Bridge added in 2015 models

Item	Part Name	Part Number	Quantity
1	Lower Arm Link	L400	1
2	Clevis	RC-3281	1
3	Lower Pivot Link	670-335	1
4	3/4" Flat Washer	90108A036	10
5	Lower link joint	467-2004	1
6	Hex Bolt GR5 3/8-16 x 3	91257A636	2
7	Flat Washer 1/2	ROC-8071-033	2
8	Hex Thin Locknut 1_2-20	90566A230	2
9	Threaded Rod Adjustment	3400-7	1
10	Circlip	24-13817	4

Item	Part Name	Part Number	Quantity
11	Spring	9588K830	1
12	Cross Bearing Cup	03-13914	4
13	Flange Locknut, 3/8 -16	93298A130	2
14	Upper Arm	1267-1	1
15	Flange Hex Bolt GR5 5/16 - 18 x 1	92979A253	2
16	Formed Bridge	500-750	1
17	GR5 Hex Nut Thin Nylock 3/4-10	91342A230	1

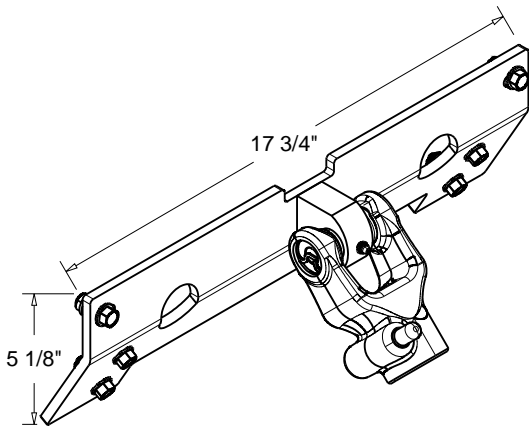
Arm Eco Assy
ARM250
Version# 18



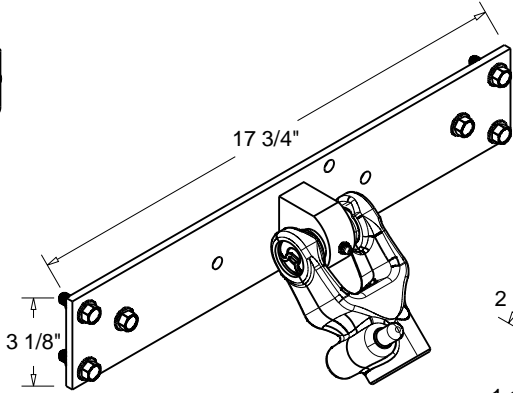
Item Number	Part Name	Part Number	Quantity
1	Lock Plate	500-4745	2
2	Cross Bearing Cup	03-13914	2
3	Flange Locknut, 3/8 -16	93298A130	3
4	Lower Pivot Link	670-335	1
5	Upper Arm	1267-1	1
6	3/4" Flat Washer	90108A036	10
7	Lower Arm Weldment Eco	400-7336	1
8	Hex Bolt GR5 3/8-16 x 3	91257A636	3
9	Circlip	24-13817	2
10	GR5 Hex Nut Thin Nylock 3/4-10	91342A230	1

Mount Options

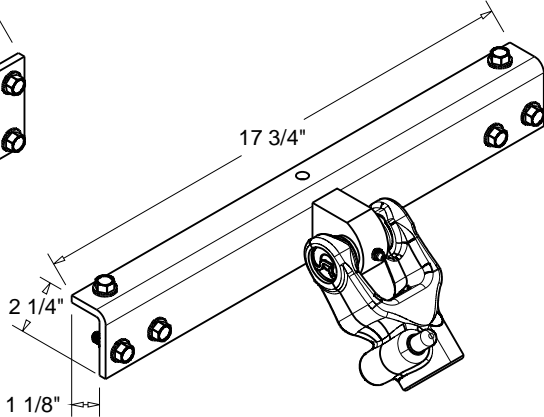
Version#



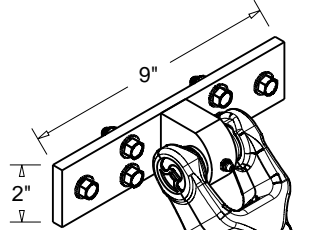
Snapper Pro Mount
Part # Snapper Pro
For Snapper Pro SW30
(use universal mount for SW35)



S Series Mount
Part # S Series
For S-Series (HP) Exmark®



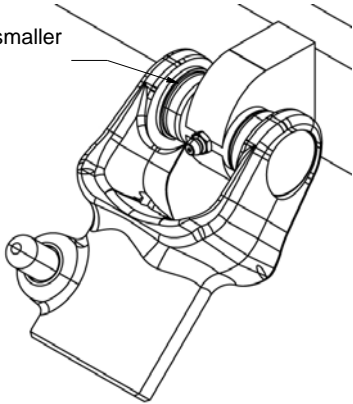
X Series Mount
Part # X Series
For X-Series Exmark®



Universal Series Mount
Part # Universal
For any Brand / Model of walk-behind
Requires holes to be drilled

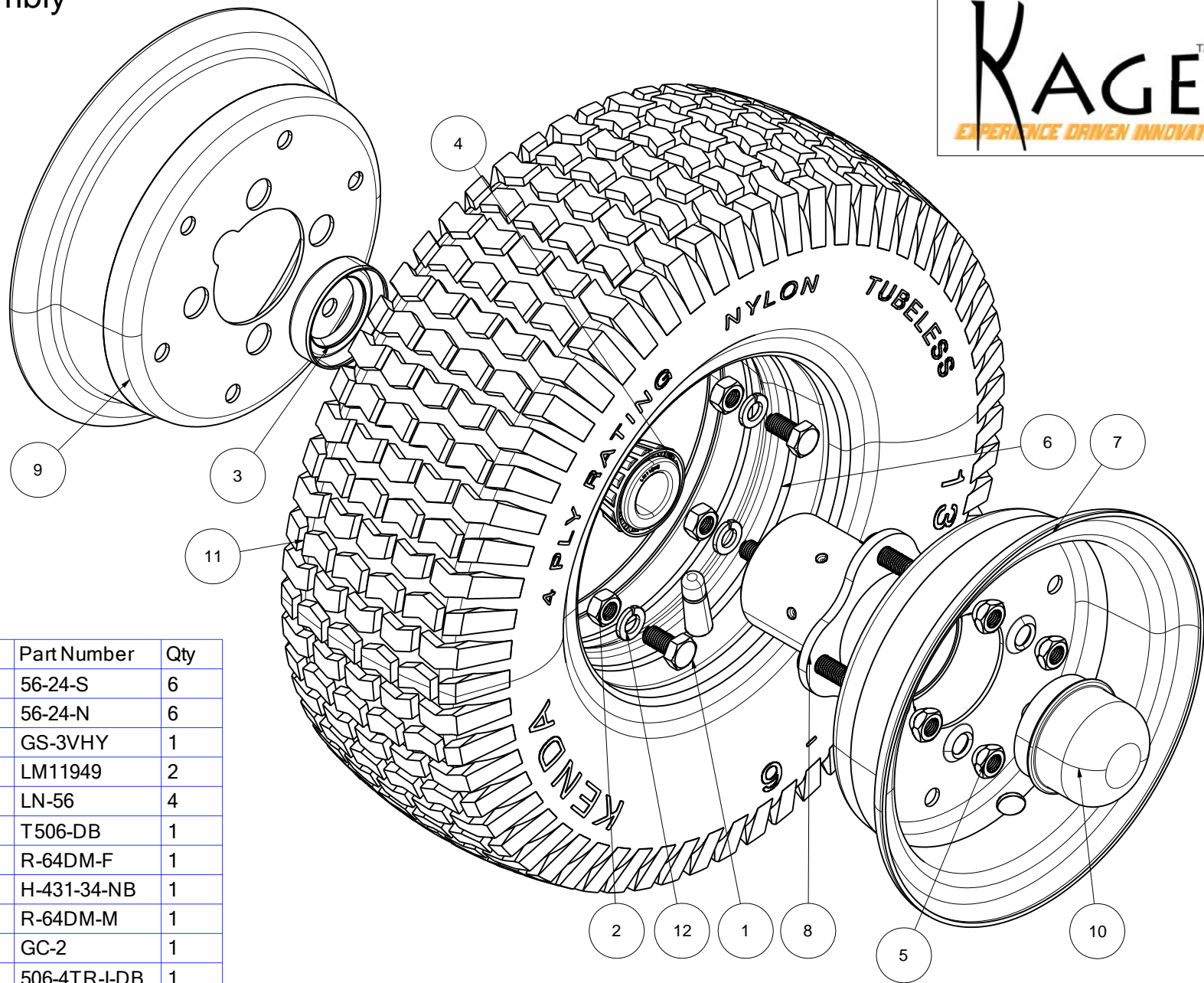
Item	Part Name	Part Number	Quantity
1	1400 Quick Release Yoke	102-1406_ASM	1
2	Flange Locknut 5/16-18	92018A320	6
3	Flange Hex Bolt GR5 5/16 - 18 x 1	92979A253	6
4	1400 Cross Bearing Cup	03-15117	2
5	1400 Retainer Clip	24-13827	2
6	{Part Number} Mount Weldment	{Part Number}-W	1
7	Zerk, 1/4 - 28	1095K44	1

Previous mount styles have a smaller yoke with circlips on the inside. Order with care.



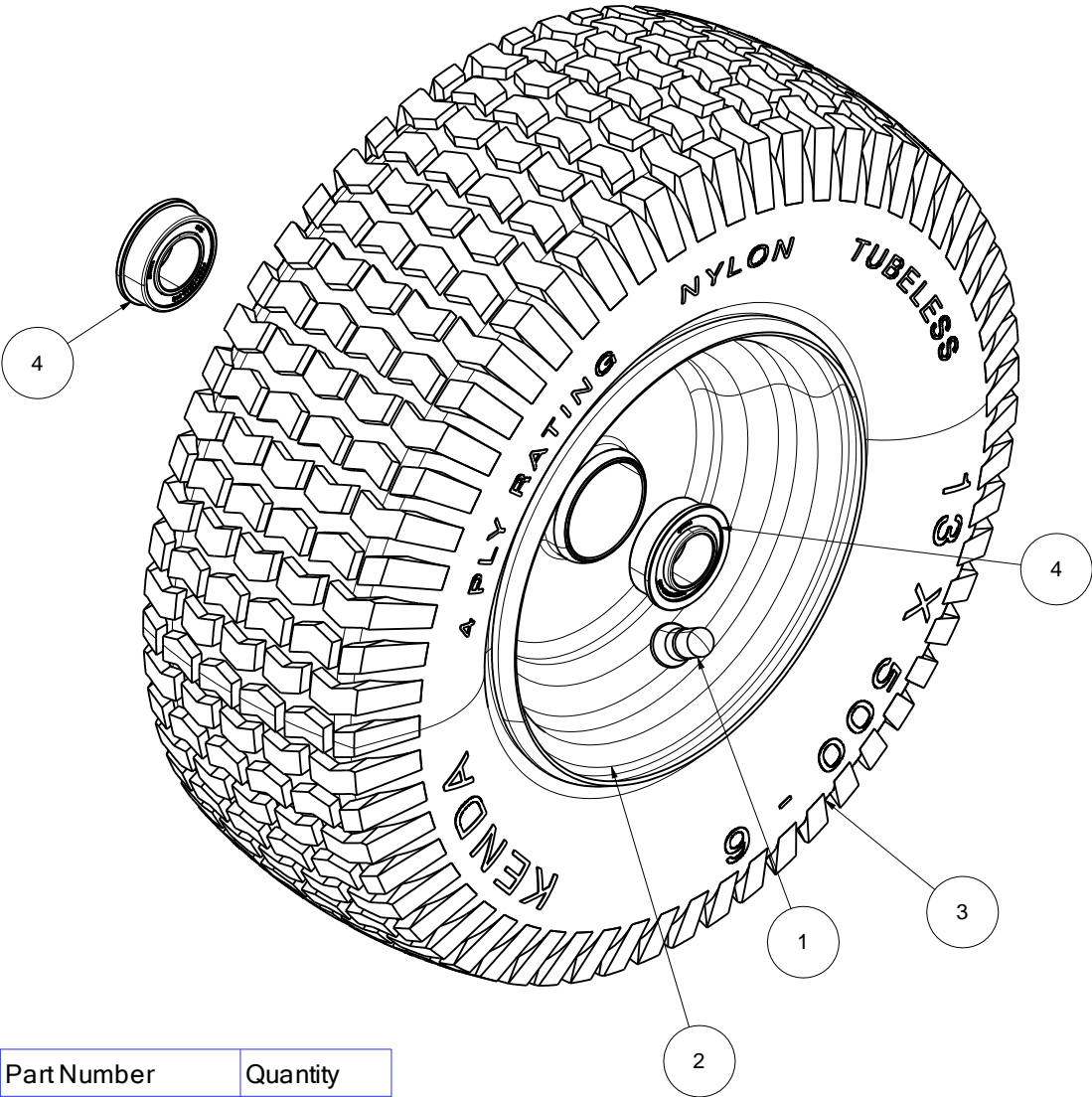
Tire and Rim Assembly
506DBTR34-KI

Version# 28



Item	Part Name	Part Number	Qty
1	Hex Bolt GR5 5/16-24	56-24-S	6
2	5/16-24 Hex Head	56-24-N	6
3	Grease Seal	GS-3VHY	1
4	LM11949	LM11949	2
5	Lug Nut	LN-56	4
6	Inner Tube	T 506-DB	1
7	Split Rim Female	R-64DM-F	1
8	Hub Assembly	H-431-34-NB	1
9	Split Rim Male	R-64DM-M	1
10	Grease Cap	GC-2	1
11	Tire 13x5.00-6	506-4TR-I-DB	1
12	5/16 Lockwasher Medium	LW-56	6

1 PC Tire_Wheel Assy
12034-2
Version# 3



Item Number	Part Name	Part Number	Quantity
1	Valve Stem	TR-412	1
2	1 Pc Wheel	W-DC4-225WLB	1
3	Tire 13x5.00-6	506-4TR-I-DB	1
4	Flange Bearing	PFBB-34	2

Complete Assembly
Configuration: TopHeight Adjustment

Part / Assembly # WHK-500-{Specify mount#}

