



Liquid Rage Owners' Manual

Contents

Attaching, adjusting and setting pressure 3

Draining tank, and cleaning filter 5

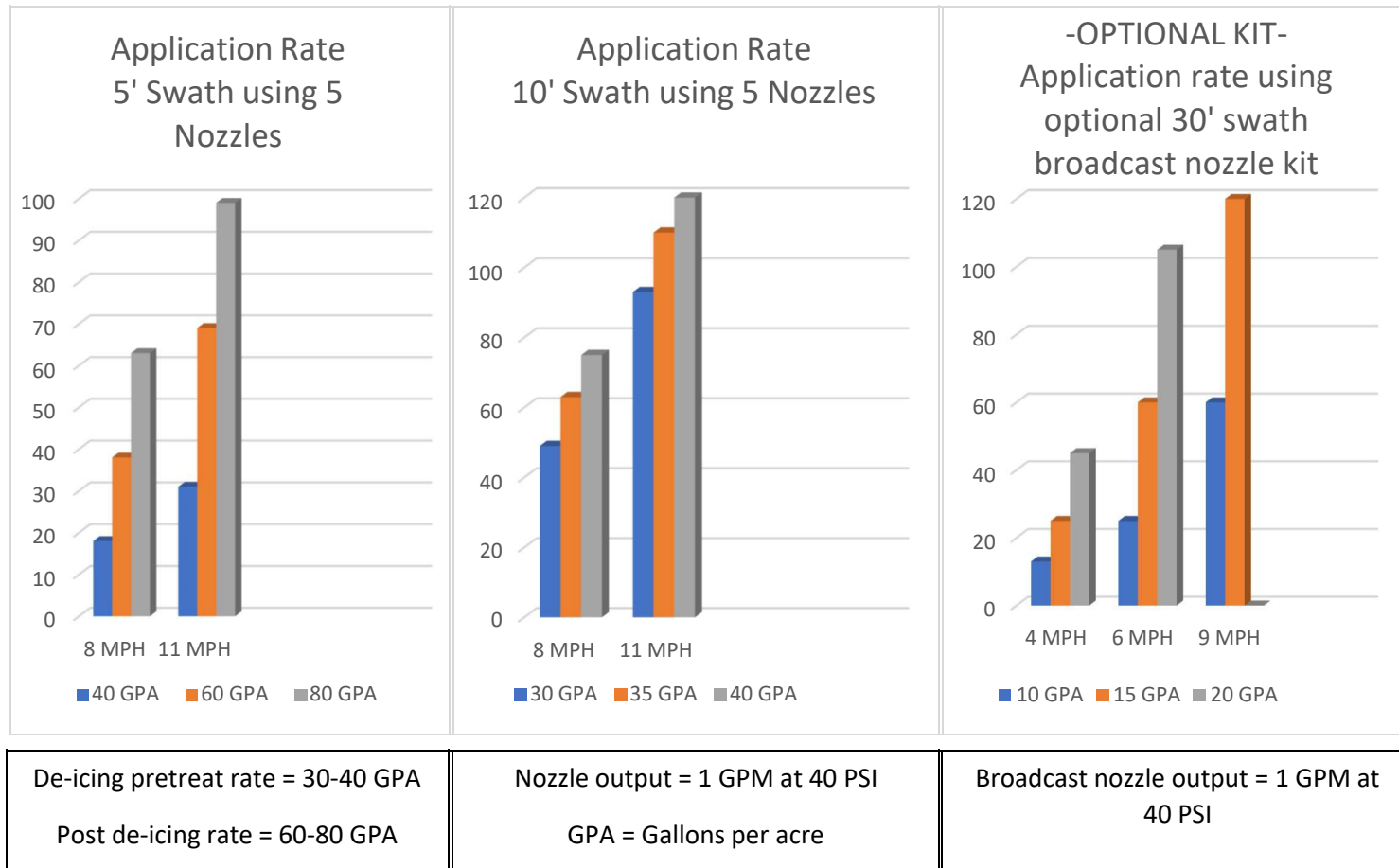
Specification sheet 6

Parts breakdown 7-8

Optional kits 9-10



Application Rate Graph



Attaching, adjusting and setting pressure

Attach to your Liquid Rage with either a skid steer universal attachment, or a category II three point tractor hitch.

Then attach your hydraulic lines.



First fill the tank through the top by removing the large black cap and filling.

Next adjust the angle of the four outer nozzles to your preferred spray width.

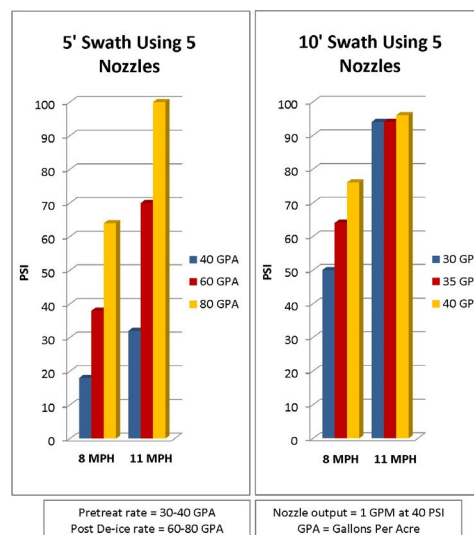
Shown here are positions for 5' and 10' spray swathes respectively.



Adjust the pressure gauge depending on your swath width and intended travel speed.

Use graph on tank to determine PSI, than adjust by turning gray knob on gauge.

You are now ready to spray!



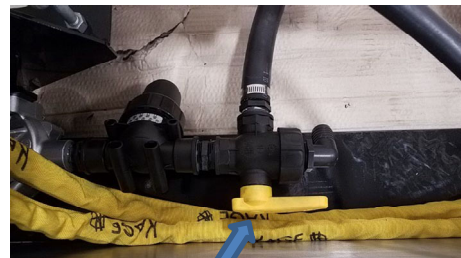
Draining tank, and cleaning filter

IMPORTANT: Rinse periodically when using brine to avoid buildup. Storing brine for long periods of time may cause plugged nozzles.

To drain tank, first remove protective Upper Frame plate.



Next, rotate the valve handle 180 degrees clockwise. This will allow the tank to drain.



The filter should be cleaned when any noticeable pressure drop is observed.

To clean filter, first remove from housing.



Clean any debris from filter and housing. Then reinstall.

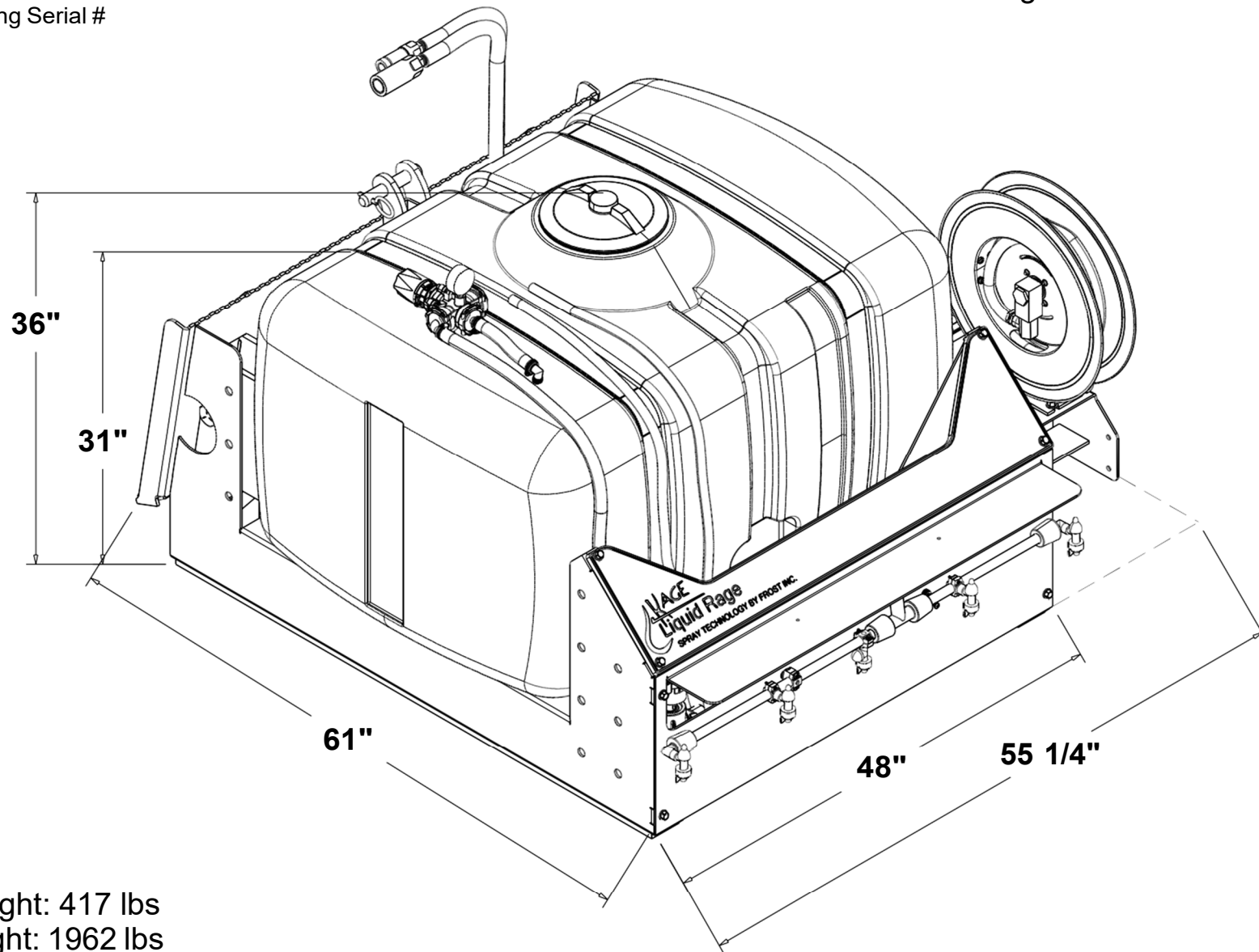


Liquid Rage Assembly 150 SA150

Version# 1

Version Starting Serial #

Operating height should be 4" to 6" from the bottom of the unit to the ground.

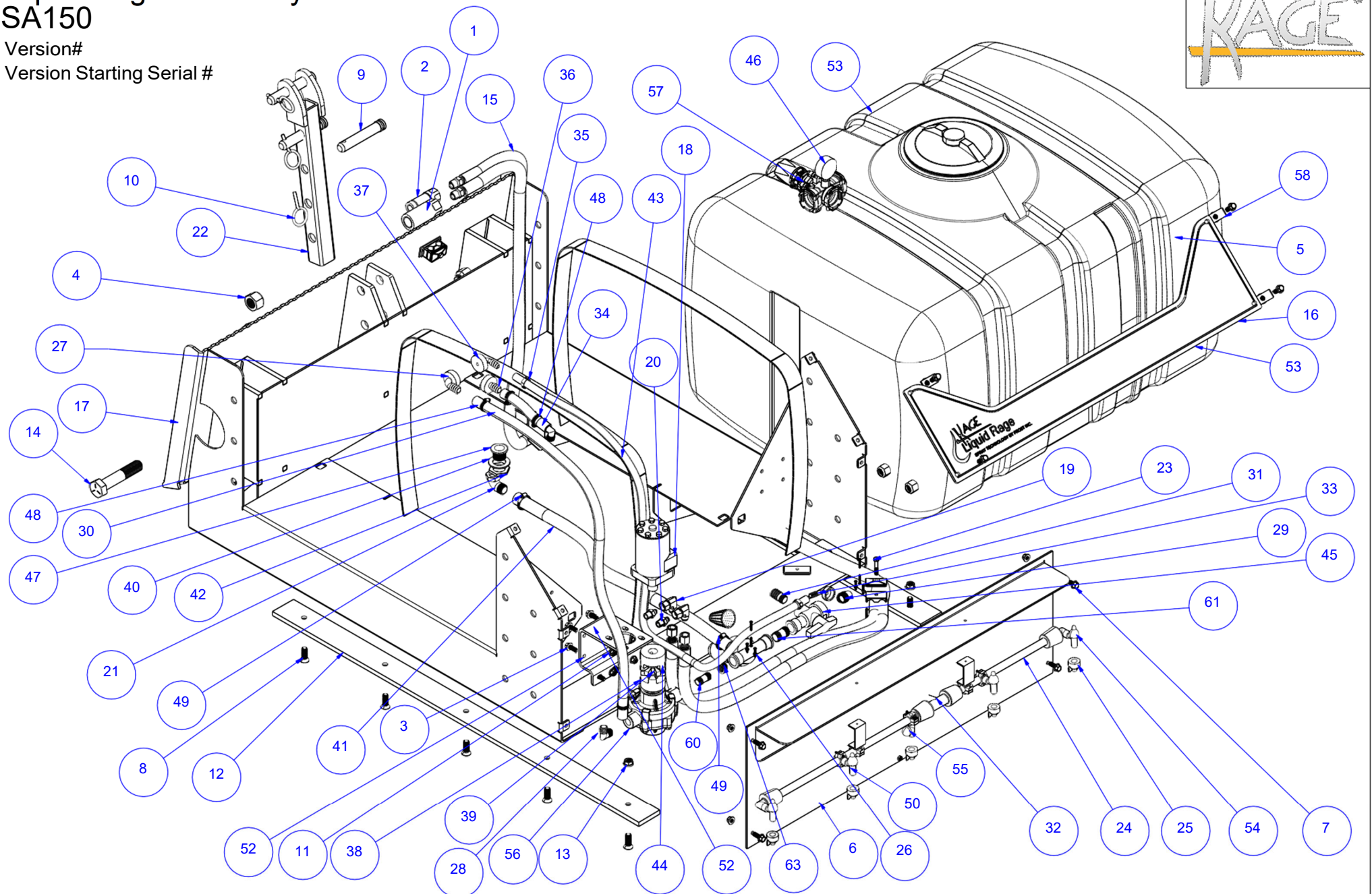


Dry weight: 417 lbs
Fill weight: 1962 lbs

Liquid Rage Assembly 150 SA150

Version#

Version Starting Serial #



Item	Part Name	Part Number	Quantity	Part Revision
1	Hydro Coupler, Female	FEM-501-8FP-NL	1	BLANK
2	Hydro Coupler, Male	FEM-502-8FP	1	2
3	Flange Hex Bolt 3/8 - 16 x 1	92979A344	6	BLANK
4	Hex Nylock Nut 1 1/8-7	95615A340	2	1
5	Flange Locknut SS 3/8 -16	94238A103	4	BLANK
6	Front Frame	SA150-6	1	2
7	Flange SS Hex Bolt 3/8 - 16 x 1	97646A220	8	BLANK
8	Hex Drive Flat head Screw 1/2 - 13 x 1.5	91263A605	10	BLANK
9	Top Link Pin	21262	3	BLANK
10	Lynch Pin	90170A226	3	BLANK
11	Flange Locknut, 3/8 -16	93298A130	4	BLANK
12	Skid Bar	SA150-16	2	1
13	Flange Locknut 1/2 - 13	RF1213OFZ	10	BLANK
14	Hex Bolt Gr5 1-1/8 - 7 x 5.5	91283A156	2	1
15	Hydro Line Rear-Front	HY-800	2	BLANK
16	Upper Frame	SA150-1	1	4
17	Sprayer Weldment	SA150-40	1	1
18	Hydraulic Motor	PMM-4B-100	1	1
19	JIC 90 Elbow	6500-08-08	2	BLANK
20	JIC x Pipe Adapter 08x08	2404-08-08	2	BLANK
21	Elbow 1 x 1-1/4	FNAE-100100	1	1
22	Sprayer Hitch Weldment	SA150-30	1	1
23	Beta Clamp	T3014T	2	BLANK
24	Boom Pipe, Stainless Steel	SNC150	1	1
25	FASTCAP 6 JET TIP-LTBLUE	FC-ESI-11010	5	1
26	STRAINER PP 1'FNPT 50M	3350-0151N	1	1
27	3/4 Barbed x gauge fitting	3EL34	1	1
28	3/4 MNPT X 3/4 HB Poly Elbow	3EL34	2	1
29	Elbow MNPT x HB 1', poly	3EL100	1	1
30	Hose 3/4 x 45	10031750	1	1
31	1' MNPT x 1' HB Poly	3A100	1	1

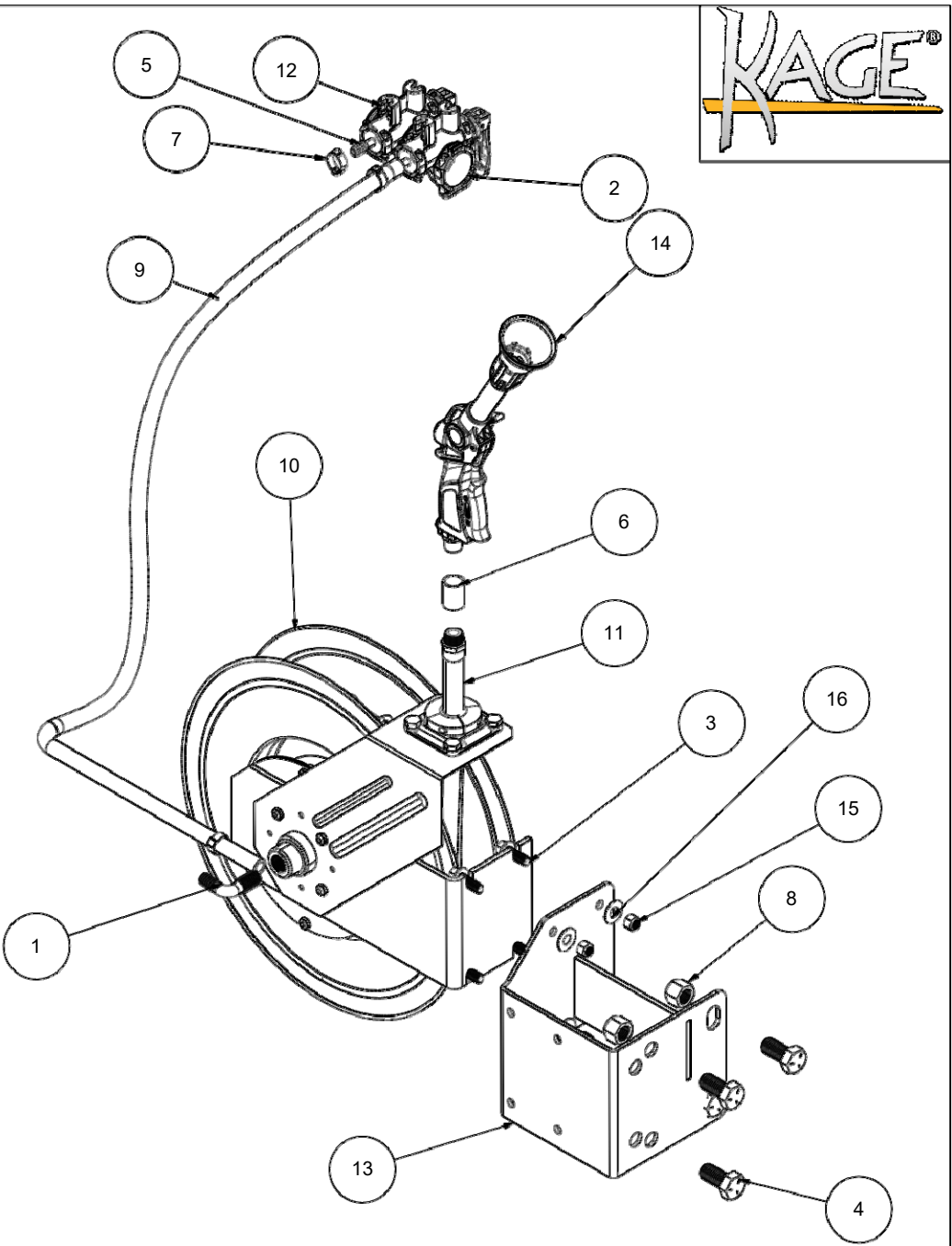
Item	Part Name	Part Number	Quantity	Part Revision
32	Tee 1/2	193213	1	1
33	HOSETAIL T3F D.13	1090313	1	1
34	Hose 1 x 7-1/2	10031760	1	1
35	Crimp Hose Clamp 3/4	54105K42	2	1
36	ELBOW T5M D.20	1191520	1	1
37	Fitting T5 M, 1/2" HB, 90	1191513	1	1
38	Love Joy Coupling, L095, 1"	2739-1005	1	1
39	Love Joy Coupling, L095, urethane disc	2729-1005	1	1
40	FLAT GASKET 33X45X3 EPDM	G40004	1	1
41	Hose 1 x 38	10031760	1	1
42	1-1/4 Nut	2052040	1	1
43	Hose 1/2 x 60	10031630	1	1
44	Love Joy Coupling, L095, 15/ 16	2739-1004	1	1
45	3-WAY BALL VALVE 1"	45521114N	1	1
46	2-1/2 LF SS 1/4BM 160PSI	GG160	1	1
47	Drain Fitting	220040	1	1
48	Hose Clamp 1 x 9/ 16	5415K14	4	1
49	Hose Clamp 1-1/4 x 5/ 16	5416K56	2	1
50	ADJ.UNI-JET D1/ 2 F10, inner swivels	4063845C	2	1
51	LiquidRage Decal	LRD-1	1	BLANK
52	Motor and Pump Bracket	MPBA1	1	3
53	Tank 150 Gallon	SP0150-RT	1	1
54	BOOMLESS NOZZLE HOLDER 1/2', outer ends	4065845C	2	
55	NOZZLE BODY-SINGLE ASSY 1/2' Pipe, center	4221N-B122	1	1
56	Hypro 8-Roller pump, Silver cast, 3/4" FNPT ports	7560XL	1	1
57	Pressure Valve	475551	1	1
58	Body Clip 3/8-16	94850A179	4	1
59	Hex Nylock Nut GR 5 3/4-10	95615A270	2	BLANK
60	3/4 X 3/4 Stainless Steel Threaded Nipple	M34SS	1	1
61	1 MNPT Straight fitting Stainless Steel	3A100SS	1	1
62	Black Ratchet Strap 1.5 x 7	1428-K7-1	2	1
63	Fitting, reducer bushing 1" to 3/4" Stainless Steel	3RB10034SS	1	1

Hose Reel Kit
HRK50

Version#
Version Starting Serial #

Optional kit, not included in SA150

Item	Part Name	Part Number	Quantity	Alibre Part Revision
1	Male NPT Elbow 1/2 x 90	MNPT9012	1	1
2	T5F cap	219150	1	1
3	Flange Hex bolt 7/16-14 Stainless	92323A568-SS	4	BLANK
4	Hex Bolt 3/4-10 x 1.5	92865A839	4	BLANK
5	Fitting HB T3, 1/2	1091313	2	1
6	NPT coupler 1/2 x 1/2 Stainless	4464K354	1	1
7	Crimp Hose Clamp 3/4	54105K42	3	1
8	Hex Nylock Nut GR 5 3/4-10	95615A270	4	BLANK
9	Hose 1/2 x 84	10031630-84	1	1
10	Hose Reel Stainless	5132K31	1	1
11	Hose 50ft	H550N	1	1
12	Manual Valve T5	463T051	2	1
13	Hose Reel Bracket Weldment	HRB10W	1	1
14	Spray Gun Hydra plus nozzle	5062410F	1	1
15	Nylock Nut 7/16-14 Stainless	91831A133	4	1
16	Flat Washer 7/16-14 Stainless	90107A032	4	1



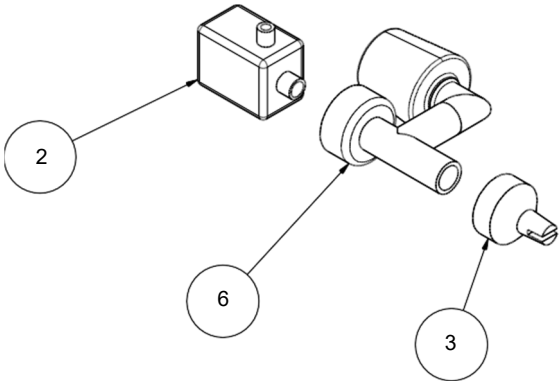
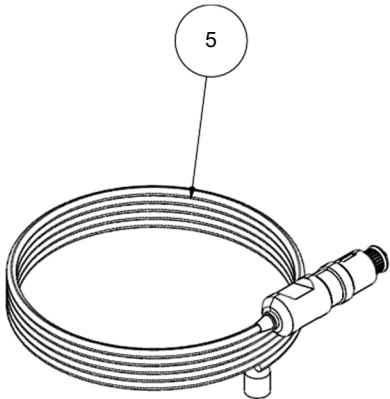
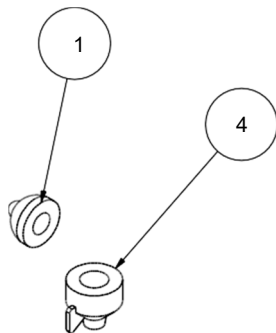
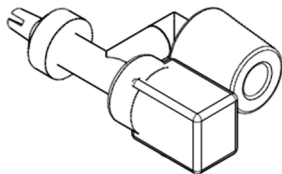
Broadcast Nozzle Kit BNK10

Version#
Version Starting Serial #



~Optional kit, not included in SA150~

Recommended travel height for the broadcast nozzles is 24”
- 32” from the ground.



Item	Part Name	Part Number	Quantity	Alibre Part Revision
1	Red Check Valve 0.5B	424550	1	1
2	Pro Stop Valve	3305-0011	2	1
3	Broadcast XT Nozzle	FC-XT010	2	1
4	FASTCAP ULD 120 DEG LILAC	FC-ULD120-025	1	1
5	Spray Boom Wire Harness	WHSB10	1	1
6	BOOMLESS NOZZLE HOLDER 1/2', outer ends	4065845C	2	1

Kage Limited Warranty

Kage Innovation will repair or, at the option of Kage Innovation, replace those parts which prove defective due to material or workmanship under normal use for a period of two (2) years from the date of retail sale or date of invoice from Kage Innovation, whichever is later. Expendable items, such as rubber, or polyurethane are excluded from this warranty.

Kage Innovation warrants that the products manufactured by us to be in accordance with our published specifications or those specifications agreed to by us in writing at the time of sale. The obligation of Kage Innovation is expressly limited to repairing or replacing, at its option, any product not meeting such specifications within the warranty period.

LIMITATIONS OF WARRANTY AND DAMAGES

KAGE INNOVATION MAKES NO OTHER WARRANTY, EXPRESSED OR IMPLIED, AND MAKES NO WARRANTY OF MERCHANTABILITY OR OF FITNESS FOR ANY PARTICULAR PURPOSE. THERE ARE NO WARRANTIES WHICH EXTEND BEYOND THE FACE HEREOF.

IN NO EVENT SHALL KAGE INNOVATION, BE HELD LIABLE FOR SPECIAL, INCIDENTAL OR CONSEQUENTIAL DAMAGES OR FOR DAMAGES RESULTING FROM MISAPPLICATION, ABUSE, MISUSE, ACTS OF GOD, UNAUTHORIZED ALTERATION OF THE KAGE INNOVATION PRODUCT, OR SUBSTITUTION OF PARTS NOT AUTHORIZED IN WRITING BY KAGE INNOVATION.

To obtain service under this warranty the consumer must return the defective Kage Innovation product to Kage Innovation directly, the dealer from which the product was purchased or to any authorized Kage Innovation dealer, transportation and freight charges prepaid. Only Kage Innovation dealers are authorized to perform the obligations under this warranty with pre-authorization from Kage Innovation.

No person is authorized to alter or amend this warranty or to create any warranty other than that set forth herein without the expressed written consent of Kage Innovation.

Kage Innovation reserves the right to make improvement changes on any of our products without prior notice.