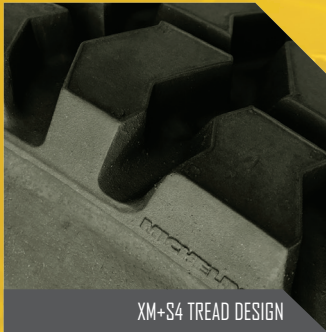


KAGE KLAWZ

ULTIMATE GRIP & RIDE COMFORT

Running conventional skid steer tires in the snow is perhaps the biggest contributor to slower productivity. Control of the machine is a monumental task and a jarring ride for the operator.

KAGE KLAWZ eliminates both of those trouble areas by providing maximum grip with the plow surface AND a softer ride. The result – move more snow in less time and experience less operator fatigue.



XM+S4 TREAD DESIGN



PROTECTED VALVE STEM

SEE TIRE SIZING SPECS
ON THE REVERSE SIDE

MICHELIN XM+S4 RETREADS >
allow the machine to transfer more power
to the ground and absorbs more shock
from uneven surfaces



KAGE KLAZW SPECIFICATIONS



MICHELIN® RETREAD TECHNOLOGIES XM+S4® PRE-MOLD™ RETREAD

The MICHELIN® XM+S4® Pre-Mold™ Retread is a drive position retread with well-balanced properties designed for enhanced traction, especially in heavy snow conditions. MICHELIN Retreads stand up to the abuse of skid steers yet provide a far more comfortable ride for the operator.

MICHELIN® XM+S4® BENEFITS:

- Confident handling – Enhanced traction
- Open lug tread design
- Chevron block design
- 2¹/₃₂nds tread depth

MICHELIN® XM+S4® Pre-mold Retread Tires are the best performing snow tire tread on the market. They come with a Tread-life Warranty* serviceable at any Michelin Retread dealer near you which will minimize down time — and with retreads, you may never need to buy a set of replacement tires again.

* Michelin Pre-mold Retread Tires are warrantied for the life of the tire, or down to 2/32 which is the legal limit. Search on-line for a certified Michelin retread tire dealer near you.

KAGE KLAZW APPLICATION GUIDE

| STOCK TIRE SIZE | | | | | |
|---|--------------------------|------------------------------|--|------------------------------|--------------------------|
| 10 x 16.5 (STOCK TIRE IS ABOUT 30-32" TALL) | | | 12 x 16.5 (STOCK TIRE IS ABOUT 33" TALL) | | |
| FENDER INTERFERENCE | | | | | |
| 3" FENDER CLEARANCE REQUIRED | | 6" FENDER CLEARANCE REQUIRED | | 3" FENDER CLEARANCE REQUIRED | |
| SPEED INCREASE | | | | | |
| NO SIGNIFICANT INCREASE | 11% INCREASE (~ 1.5 MPH) | 11% INCREASE (~ 1.5 MPH) | 18% INCREASE (~ 2.1 MPH) | NO SIGNIFICANT INCREASE | 11% INCREASE (~ 2.1 MPH) |
| 225 KIT | 245 KIT* | 245 KIT* | 255 KIT** | 245 KIT | 255 KIT* |
| Overall Diameter | | | | | |
| 225 Tire | 245 Tire | | 255 Tire | 245 Tire | 255 Tire |
| 32.4" | 33.4" | | 36.6" | 33.4" | 36.6" |

* NOTE: THIS CONFIGURATION INCREASES THE OVERALL HEIGHT OF THE MACHINE BY APPROXIMATELY 1 1/2"

** NOTE: THIS CONFIGURATION INCREASES THE OVERALL HEIGHT OF THE MACHINE BY APPROXIMATELY 3"

TO ORDER CALL **651-433-4628**, OR GO ONLINE: KAGEINNOVATION.COM