

SNOWFIRE BLAST

PLOW SYSTEM

KAGE

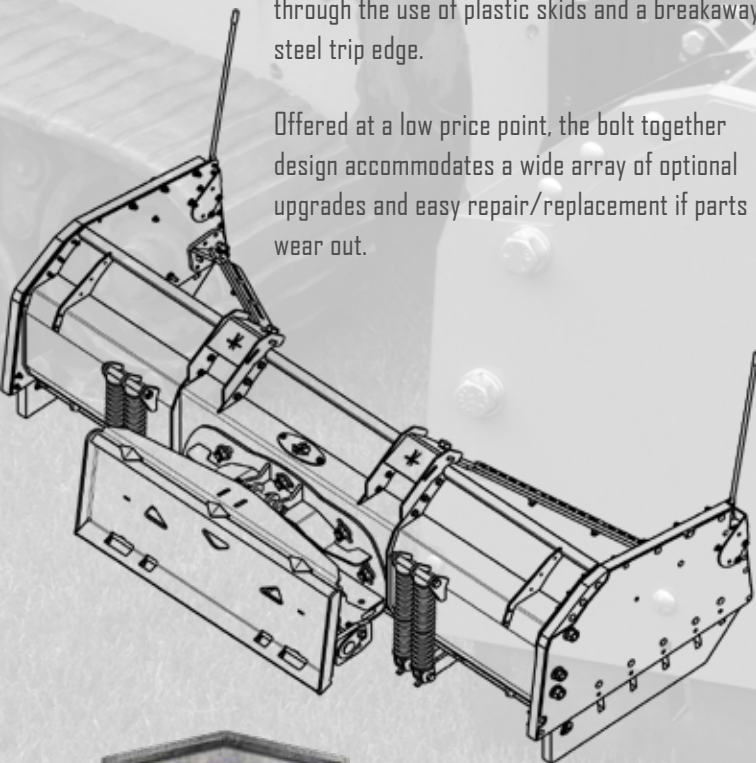


SIMPLY SMART

Take advantage of the simplicity of a snow pusher with the benefits of KAGE technology. The hydraulic-free snow pusher plow maintains constant contact with the plowing surface through oscillation, a floating quick attachment and spring loaded skids.

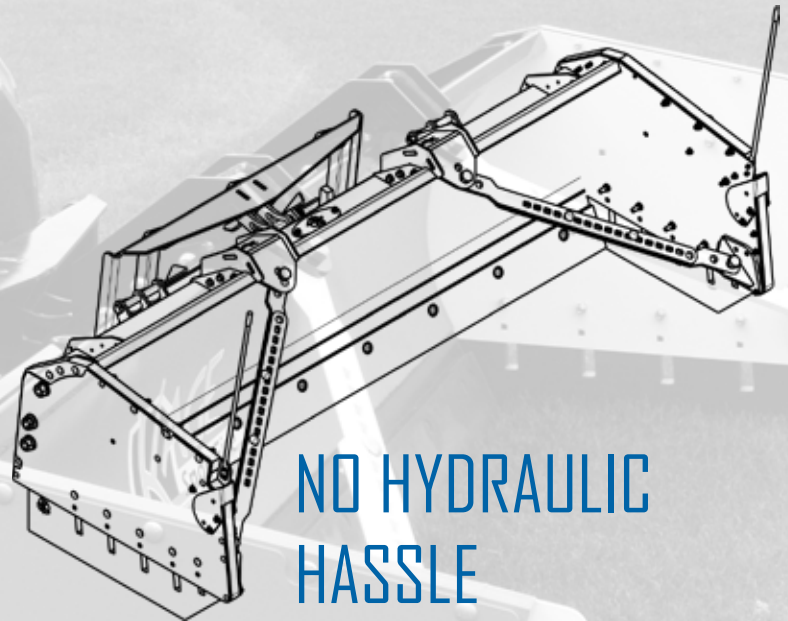
It also reduces the damage caused by plowing through the use of plastic skids and a breakaway steel trip edge.

Offered at a low price point, the bolt together design accommodates a wide array of optional upgrades and easy repair/replacement if parts wear out.



FEATURES

- Suitable for skid steers, tractors & compact loaders
- Up to 12 degrees of Oscillation keeps blade flat
- Floating skids allow cleaning to base of curbs
- Floating quick attach allows contouring to pavement
- Bolt-on parts for easy replacement/upgrading
- 8-inch trip edge with steel cutting edge
- 5 sizes (6', 8', 9', 10' & 12')
- 65-degree attack angle
- Standard Hwy DOT Punch Cutting Edge



NO HYDRAULIC HASSLE

Without hydraulic hoses to worry about attaching, detaching and fixing, the KAGE SnowFire Blast takes away the complexity that can cause extra stress when putting in the long hours during snow season.

BOLT-ON SIDE PANELS



SNOWFIRE BLAST SPECIFICATIONS

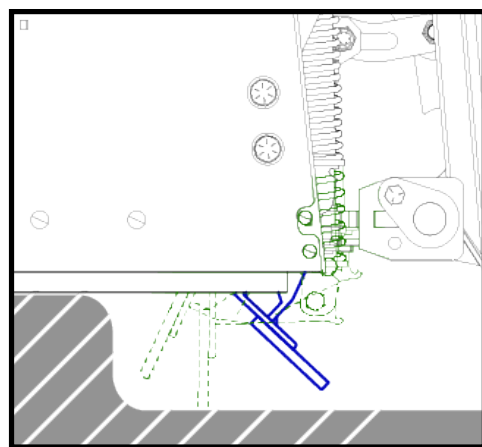


SPRING-LOADED FLOATING SKID

FLOAT SYSTEM

The unique snow pusher **trip edge** allows the steel cutting edge to trip back 70 degrees over immovable objects.

The **floating plastic skid system** rides over crowns and contours with dips in the substrate - even over curbs!



8" TRIP EDGE



FLOATING QUICK ATTACH

The **floating quick attach** allows the whole system to tilt forward and backward to accommodate hills, valleys and the loader float mode without losing steering.

The unmatched **6-degree +/- oscillation slot plate** is located closely above the cutting edge to keep constant contact between the cutting edge and the pavement or other substrate.

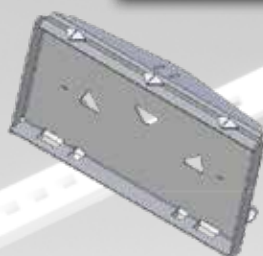


OSCILLATION SLOT PLATE

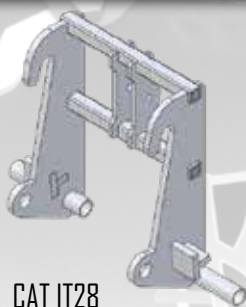
SNOWFIRE BLAST SPECIFICATIONS

MODEL:	SDP72	SDP96	SDP108	SDP120	SDP14
OVERALL WIDTH:	78.5"	102.5"	114.5"	126.5"	150.5"
HEIGHT:	35"	35"	35"	35"	35"
LENGTH:	54"	54"	54"	54"	54"
WEIGHT:	1378 lbs	1497 lbs	1554 lbs	1611 lbs	1812 lbs
OSCILLATION:	6°/7.5"	6°/10"	6°/11.25"	6°/12.5"	6°/15"
FLOAT	4.2"	4.2"	4.2"	4.2"	4.2"

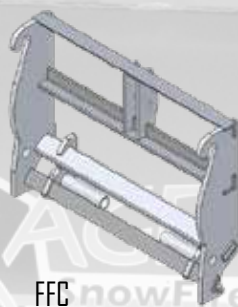
ATTACHMENT OPTIONS



Skid Steer



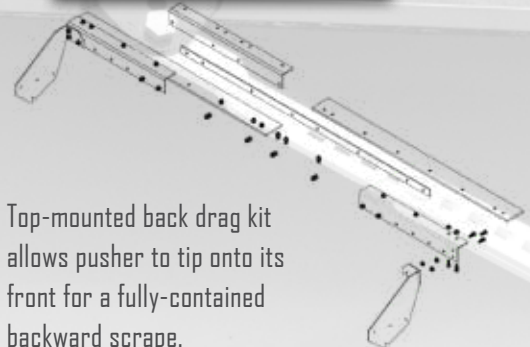
CAT 1T28



FFC

More Loader & Tractor Attachments Available

BACK DRAG KIT



Top-mounted back drag kit allows pusher to tip onto its front for a fully-contained backward scrape.

TO ORDER CALL [651-433-4628](tel:651-433-4628), OR GO ONLINE: KAGEINNOVATION.COM