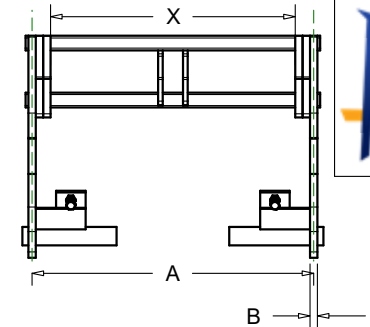
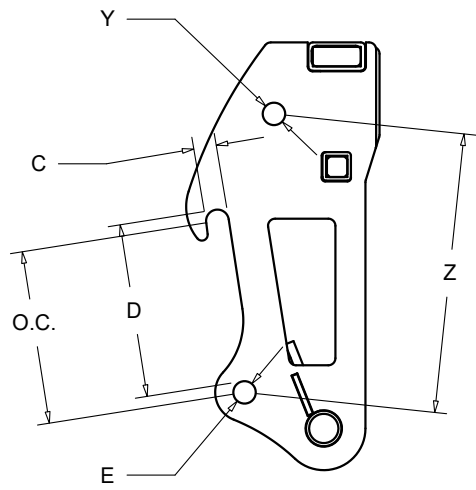


Quick Attach Dimension Chart SF

Fill out table with your coupler's relevant dimensions.
Send sheet to your Dealer, or Kage salesman.



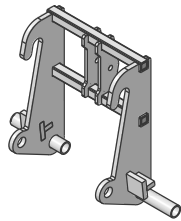
Z: Marks additional dimensions for combination couplers

X: Marks additional width dimensions for ears on different planes than the main ears

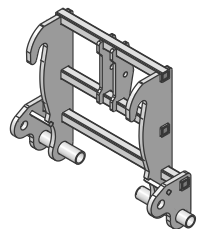
Y: Marks diameter for additional holes on combination couplers

Couplers available for use with SnowFire Kage Blades.
Use this chart to confirm which coupler will fit on your machine.
All dimensions are in inches.

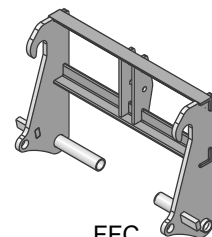
CAT IT28



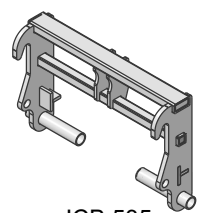
JCB 212



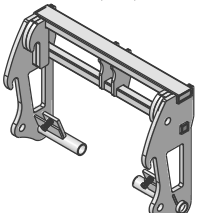
John Deere 310



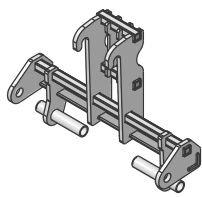
JCB 409;
Euro; Volvo L35B
Kubota R530/R630



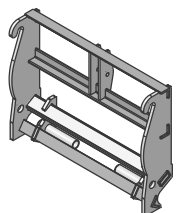
Takeuchi
TW50;65;80



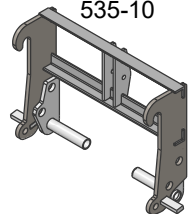
Case 221
221



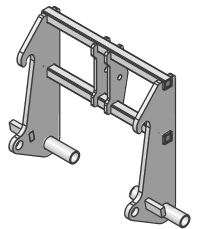
FFC
QCP-7000



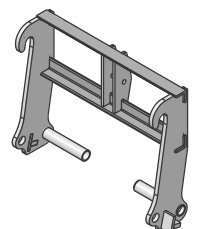
JCB 535
535-10



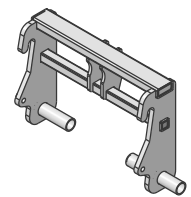
Komatsu
WB140



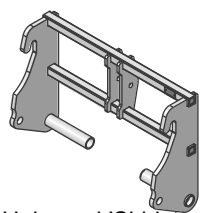
Volvo
356-20



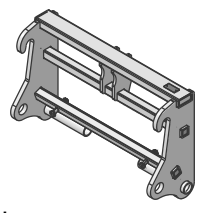
New Holland Euro
845



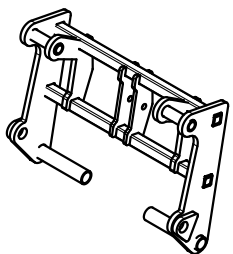
Komatsu
WA100M-6



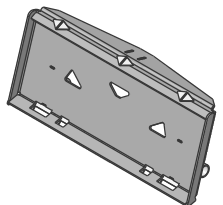
Takeuchi TW95
TAK95



Yanmar



Universal 'Skidsteer'



Coupler	Kage Part Number	A	B	C	D	E	O.C.	X	Y	Z	Non-stocked Additional Cost
CAT IT28	28-10	21.875	1.125	2.520	20.17	2.063	19.937				
JCB 212	212	25.188	1.000	2.280	19.47	1.760	19.209	33.750			
John Deere 310	JD310	38.000	1.000	2.596	20.76	1.825	20.321				
JCB 409	409	35.125	1.000	1.650	12.32	1.590	12.289				
Takeuchi	TAK506580	37.250	1.125	1.580	12.21	1.580	12.200	33.126	1.580	9.69	
Case 221	221	9.250	1.000	2.000	20.162	2.025	20.174	42.000			
FFC	FFC	47.500	1.000	2.066	24.5	2.060	24.498				
JCB 535	535-10	40.375	1.000	2.410	24.09	1.509	23.652				
Komatsu WB140	WB140	29.375	1.000	2.030	17.09	1.810	17.687				
Volvo 356-20	356-20	39.375	1.000	2.420	24.38	2.000	24.187				
New Holland Euro	845	30.250	1.000	1.650	12.16	.920	11.750				
Universal Coupler	28-600	-	-	-	-	-					
Komatsu	WA100M-6	39.000	1.000	1.562	17.09	1.562	17.062				
Tak. TW95	TAK95	38.125	1.000	2.187	14.86	2.375	15.000				
Yanmar		38.250	1.000	2.000	19.750	2.000	19.750	25.250			Yes
Your Coupler											