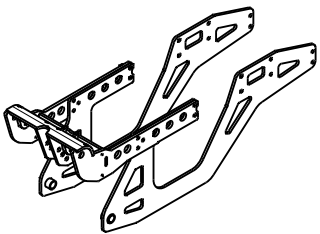
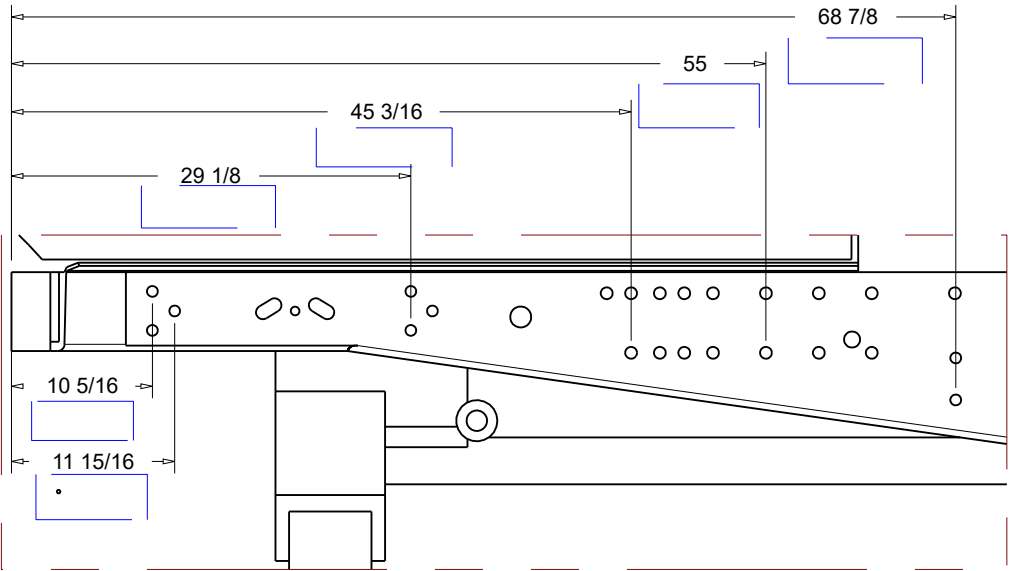
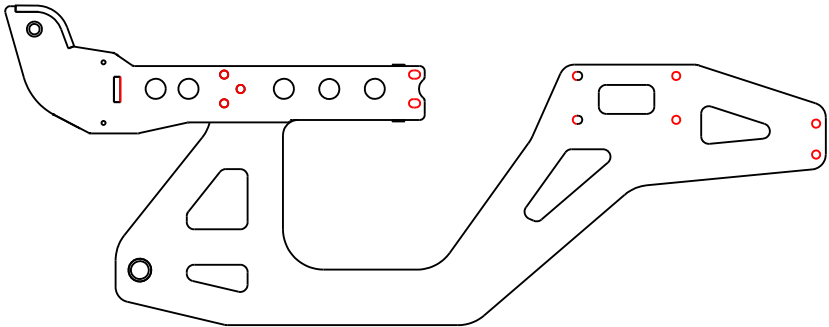
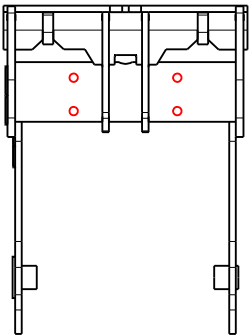


JD 6150 M Front 3 Point JDKC6150

Red highlights show the bolt placement used in this kit.
Fill out the table with your tractor's specs.
Take measurements from your tractor and fill out sheet.
Send back to your Dealer, or Kage salesmen.



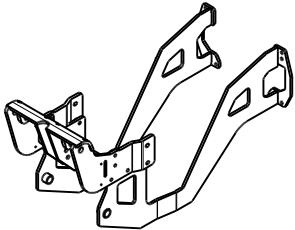
Year	Make	Model	Tier*	Your Company



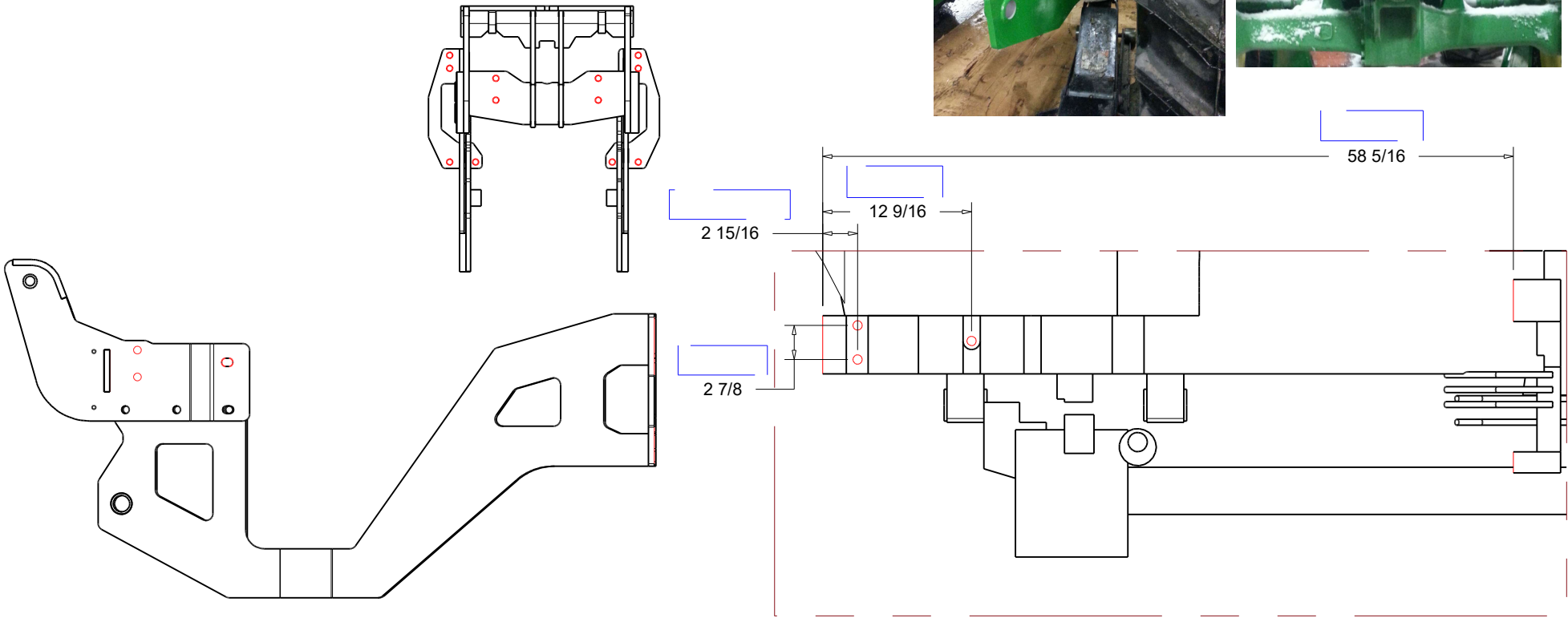
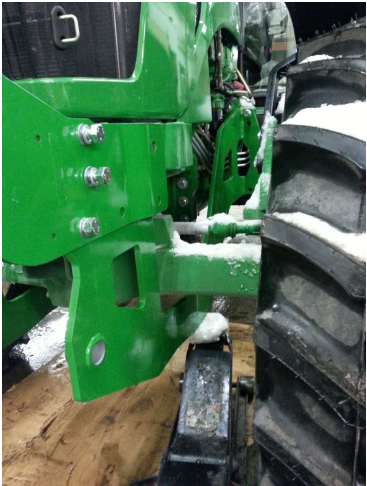
JD 6105 D _ E Front 3 Point JDKC6105

Version#

Red highlights show the bolt placement used in this kit.
Fill out the table with your tractor's specs.
Take measurements from your tractor and fill out sheet.
Send back to your Dealer, or Kage salesmen.



Year	Make	Model	Tier*	Your Company



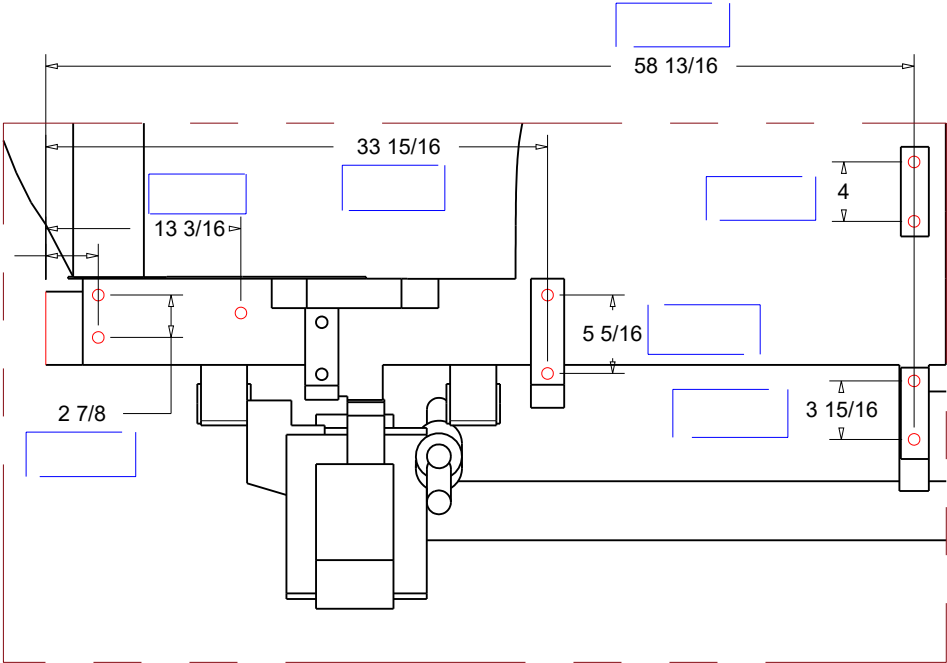
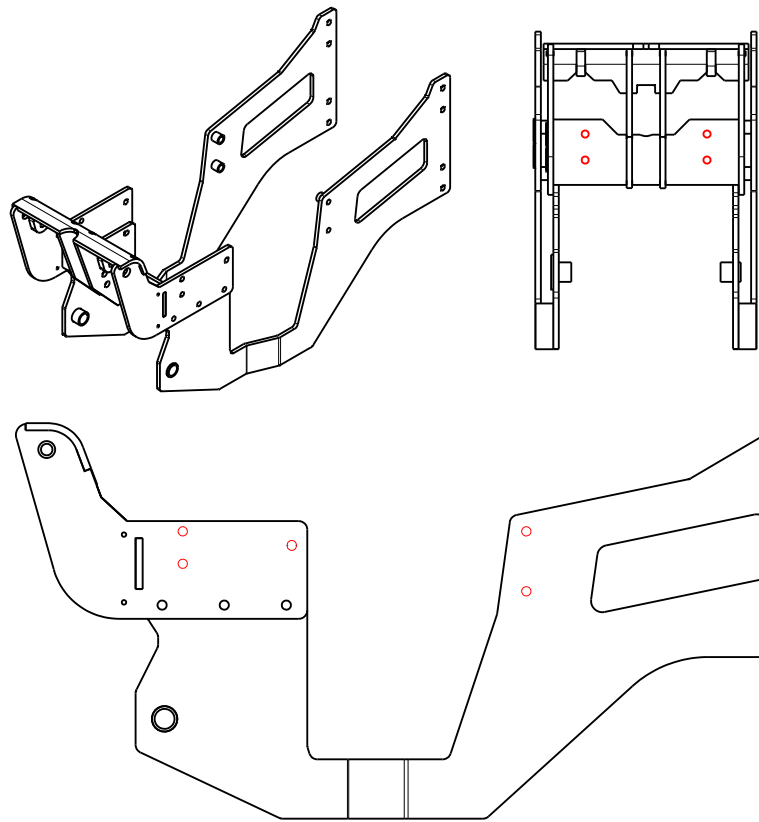
JD 6115 D Front 3 Point JDKC6115

Version#

This Model is for Tier 3 Tractors

Red highlights show the bolt placement used in this kit.
Fill out the table with your tractor's specs.
Take measurements from your tractor and fill out sheet.
Send back to your Dealer, or Kage salesmen.

Year	Make	Model	Tier*	Your Company



JD 6430 Front 3 Point JDKC6000

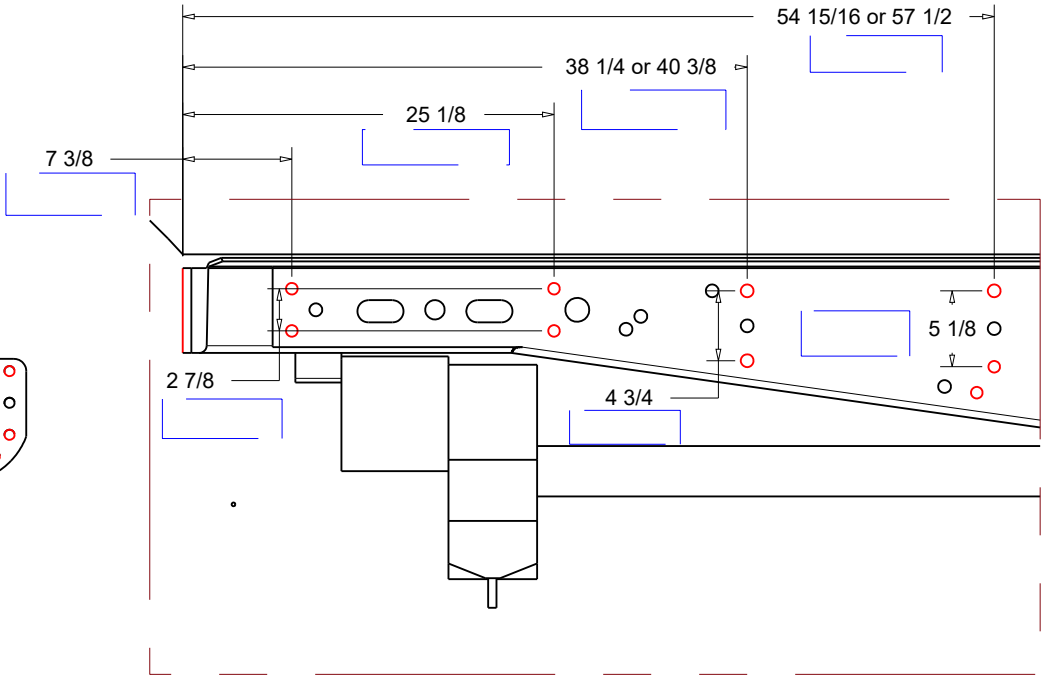
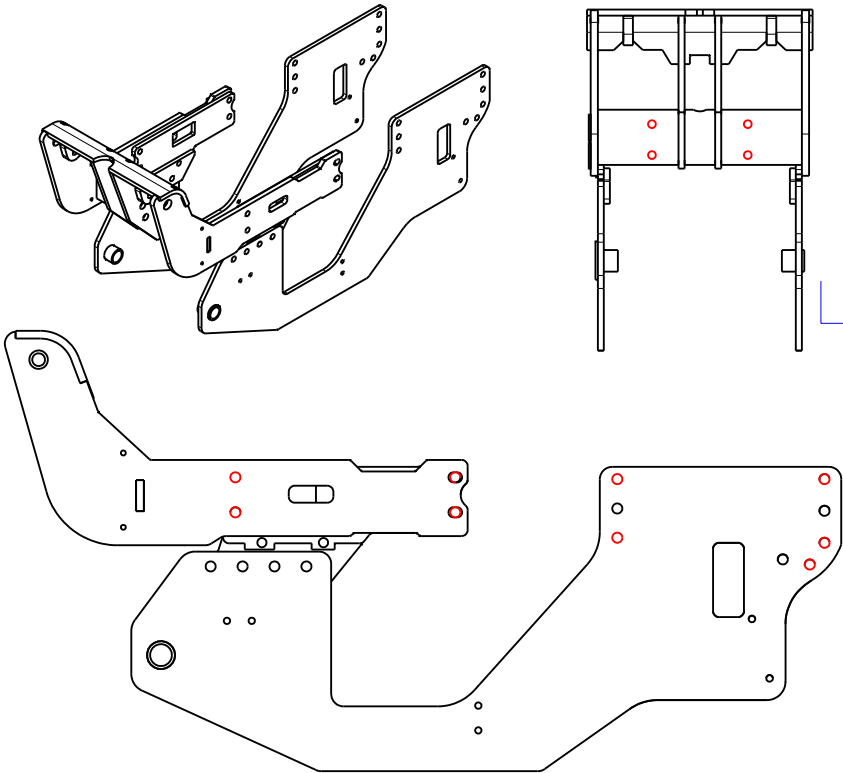
This kit fits tier 4 6000 M and R models

Version#

Red highlights show the bolt placement used in this kit.
Fill out the table with your tractor's specs.
Take measurements from your tractor and fill out sheet.
Send back to your Dealer, or Kage salesmen.



Year	Make	Model	Tier*	Your Company

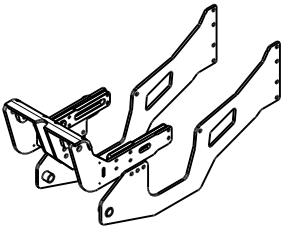


JD 5101 E Front 3 Point
JDKC5000E

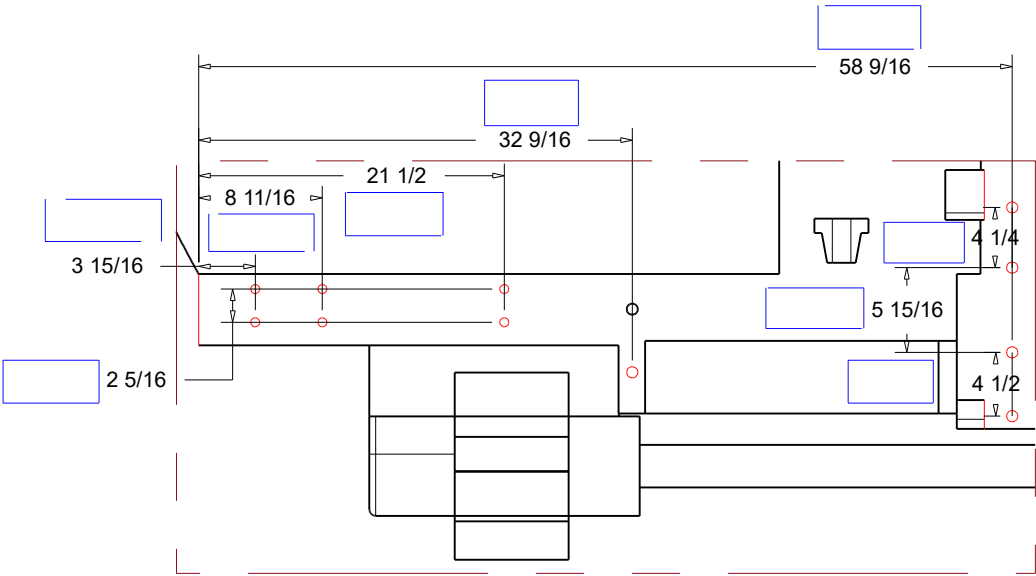
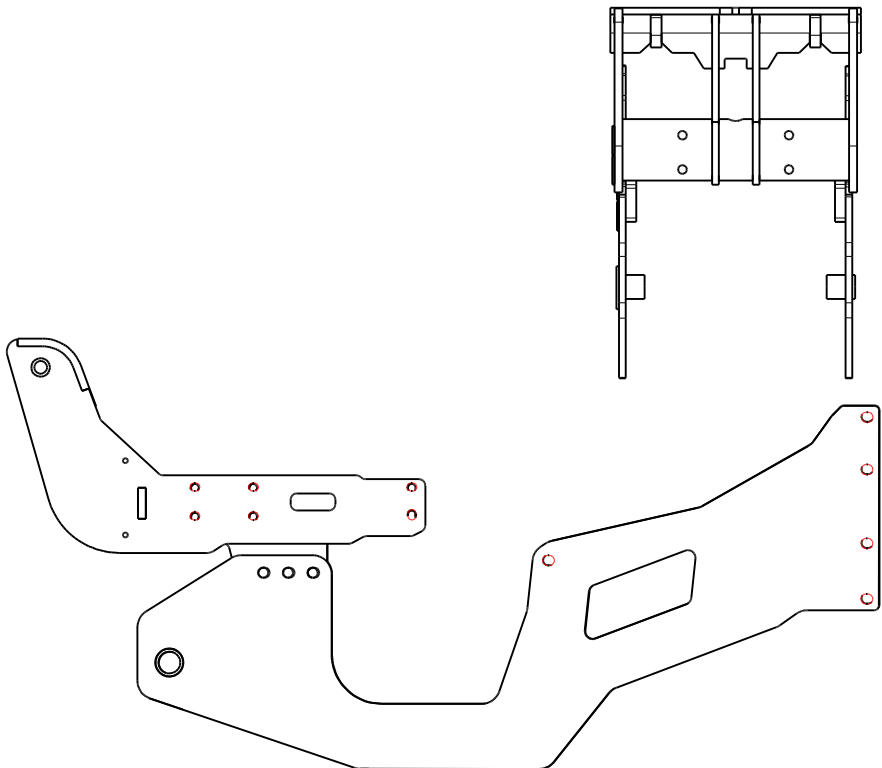
Version# 2015
Version Starting Serial #

This Version fits 2015 + Models

Red highlights show the bolt placement used in this kit.
Fill out the table with your tractor's specs.
Take measurements from your tractor and fill out sheet.
Send back to your Dealer, or Kage salesmen.



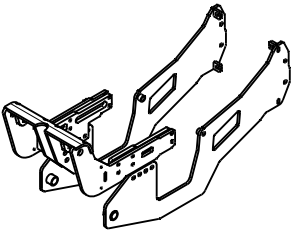
Year	Make	Model	Tier*	Your Company



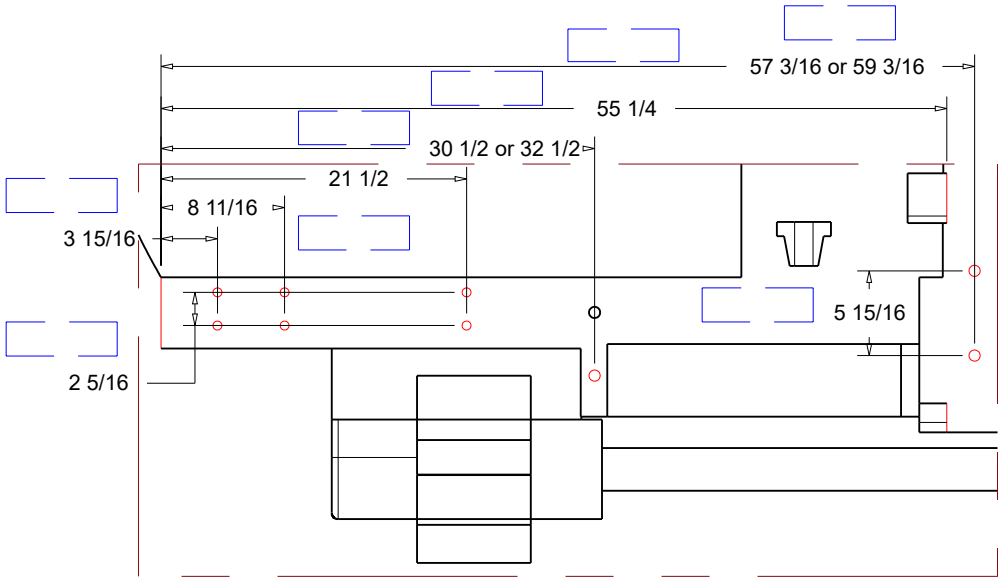
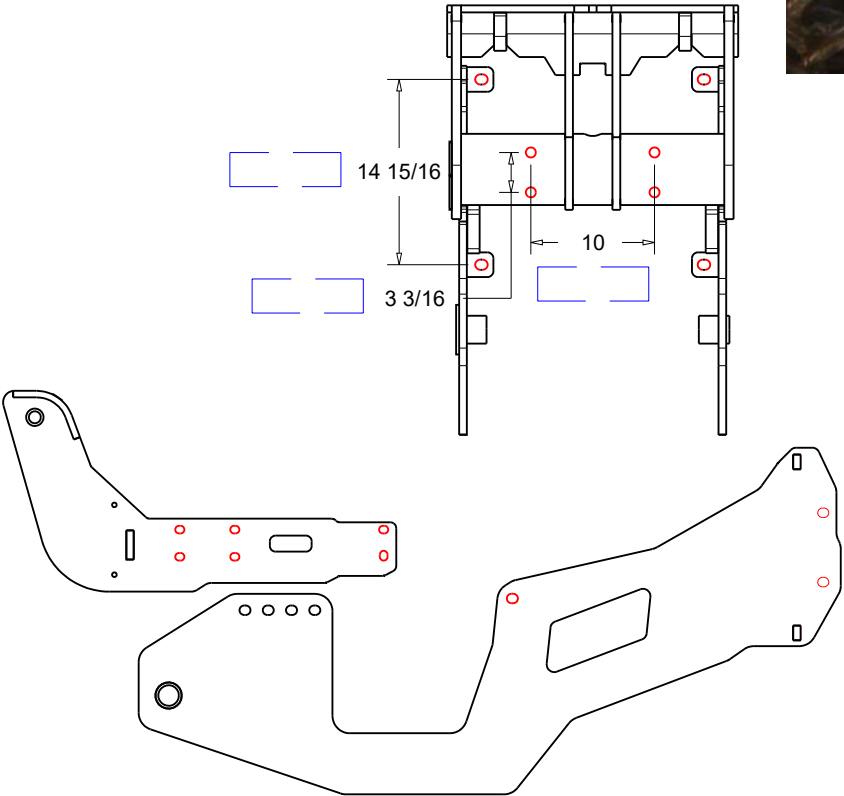
JD 5101 E Front 3 Point JDKC5000E

Version#

Red highlights show the bolt placement used in this kit.
Fill out the table with your tractor's specs.
Take measurements from your tractor and fill out sheet.
Send back to your Dealer, or Kage salesmen.



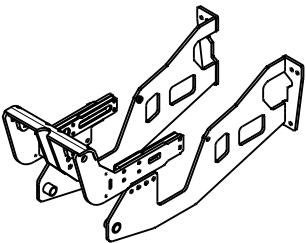
Year	Make	Model	Tier*	Your Company



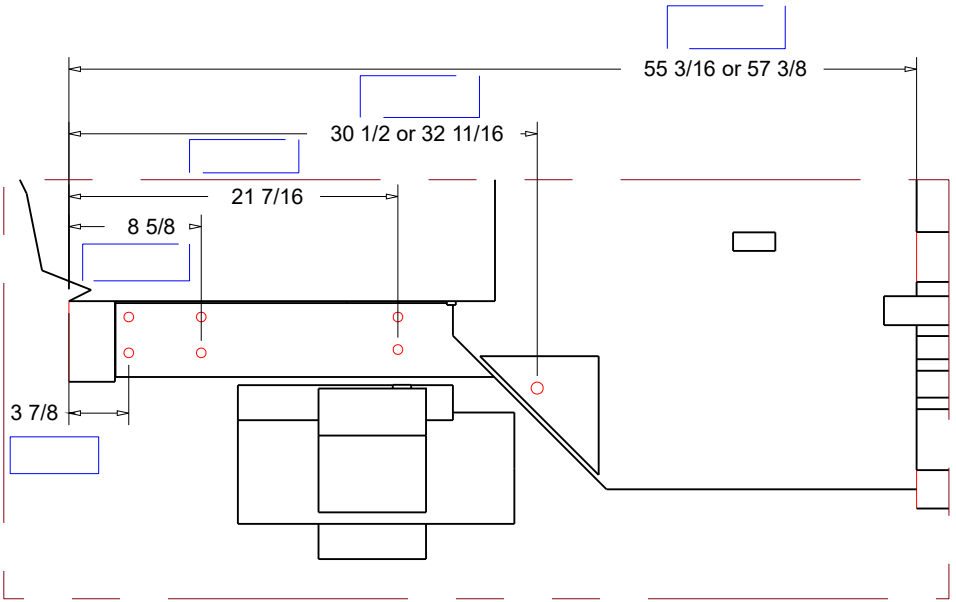
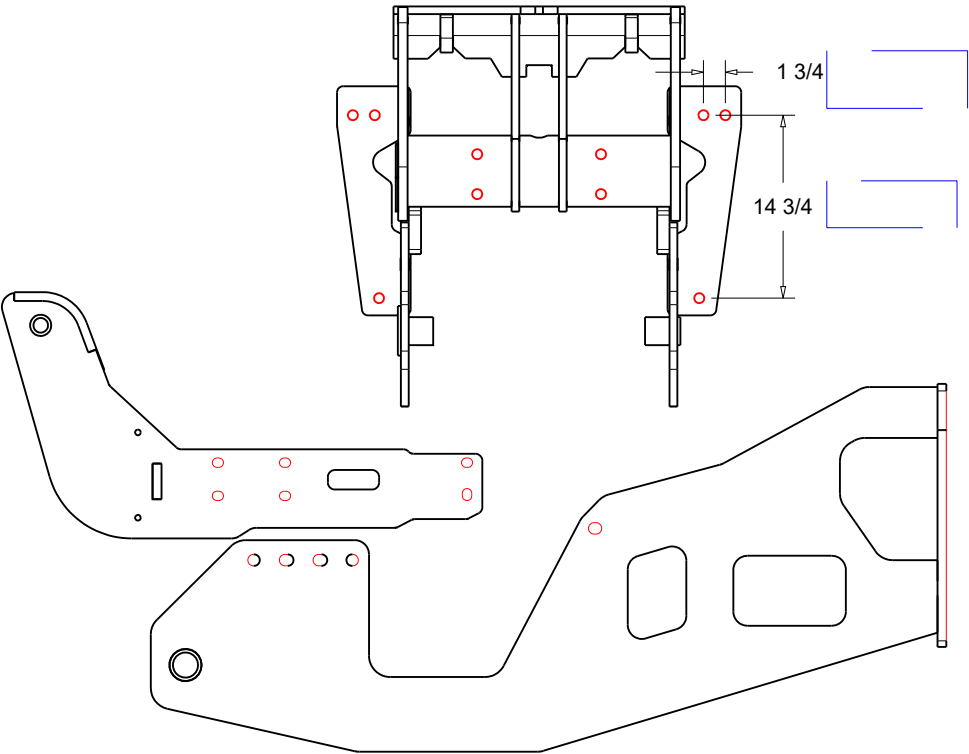
JD 5105M 3 Point
JDKC5000M

Version#

Red highlights show the bolt placement used in this kit.
Fill out the table with your tractor's specs.
Take measurements from your tractor and fill out sheet.
Send back to your Dealer, or Kage salesmen.



Year	Make	Model	Tier*	Your Company

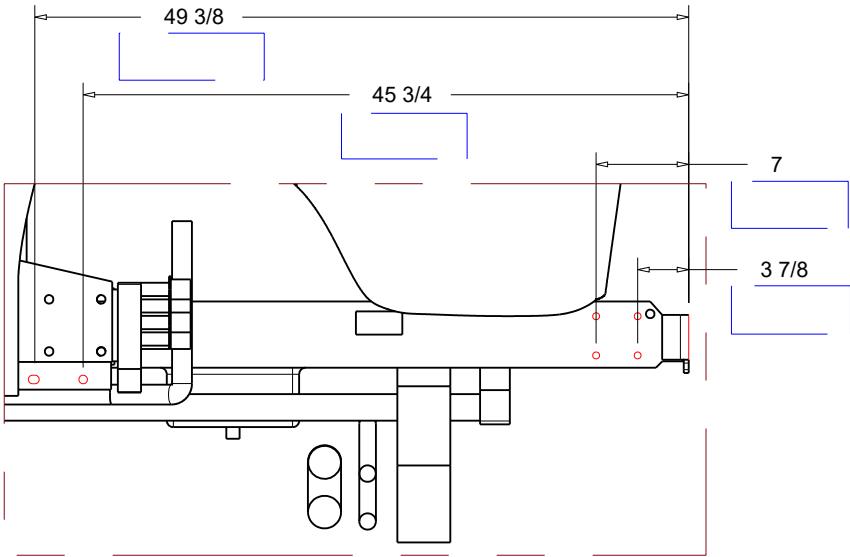
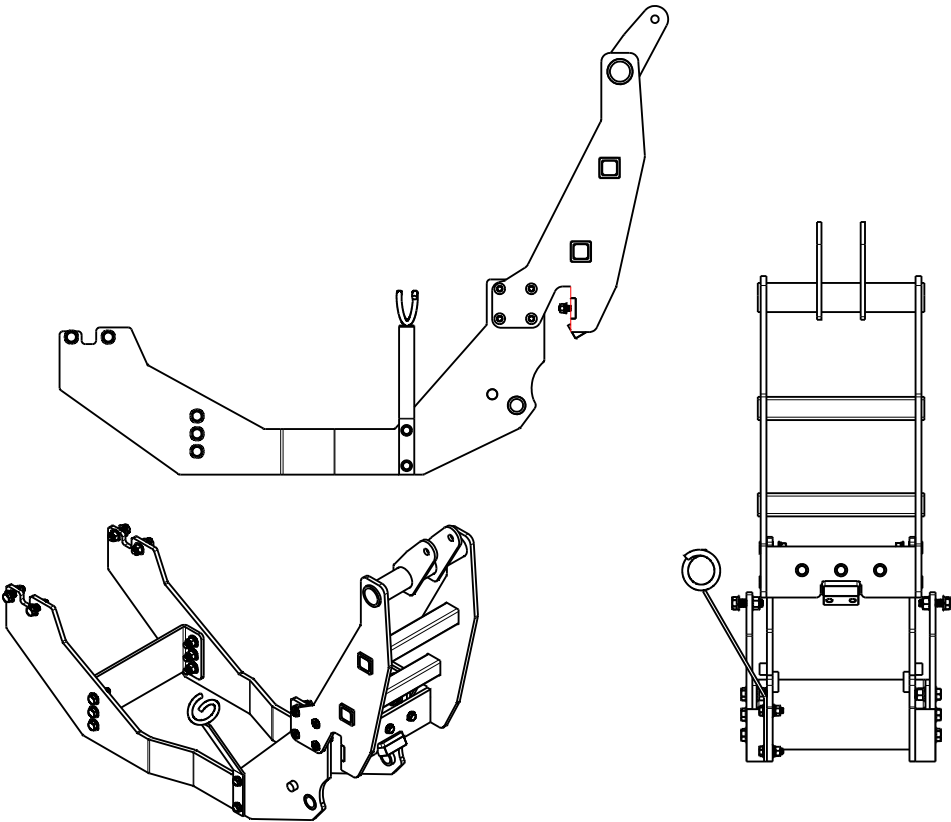


JD 4720 Front 2 Point JSK-4700

Version#

Red highlights show the bolt placement used in this kit.
Fill out the table with your tractor's specs.
Take measurements from your tractor and fill out sheet.
Send back to your Dealer, or Kage salesmen.

Year	Make	Model	Tier*	Your Company



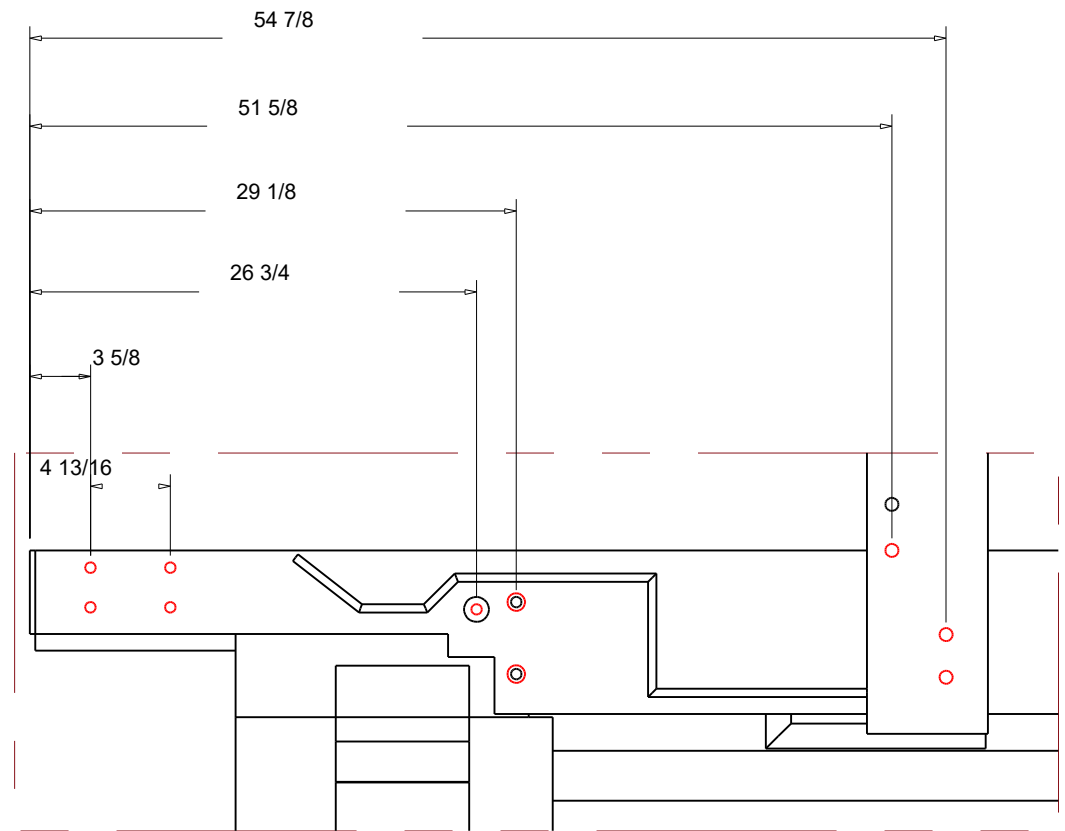
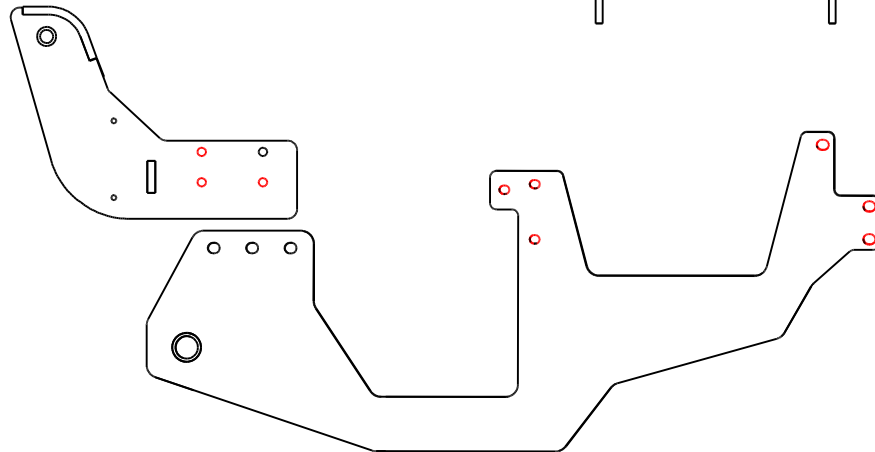
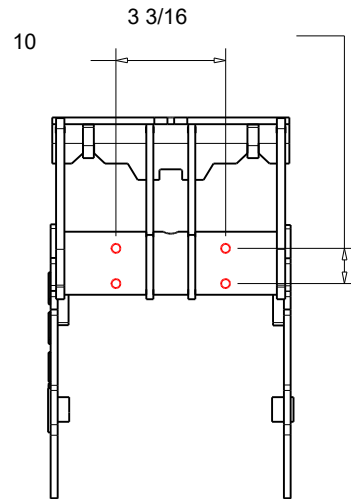
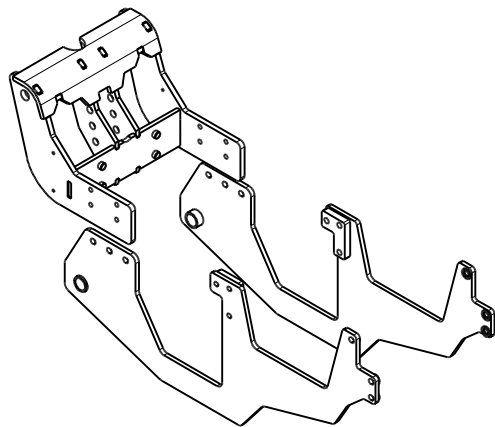
John Deere 5075E

JDKC5075E

Version: 2019



Red highlights show the bolt placement used in this kit.
Take measurements from your tractor to confirm fitment.



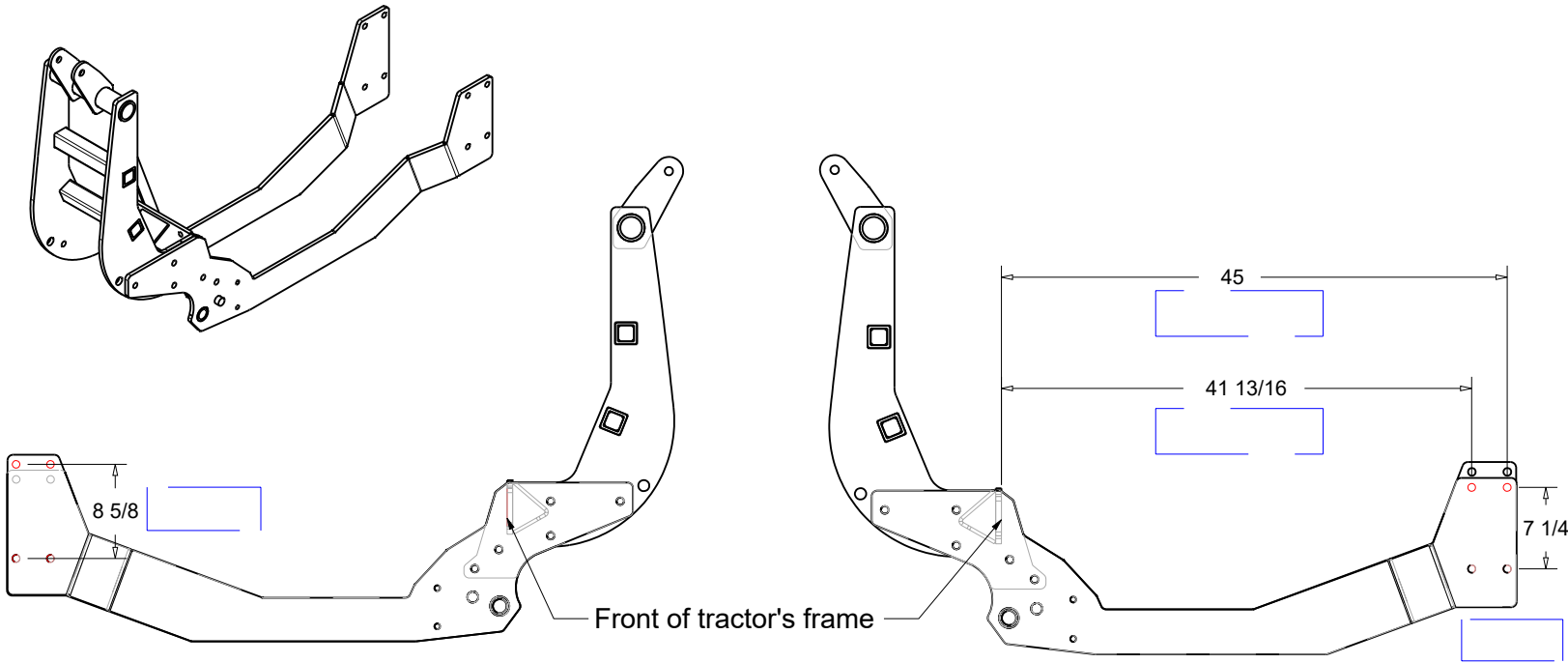
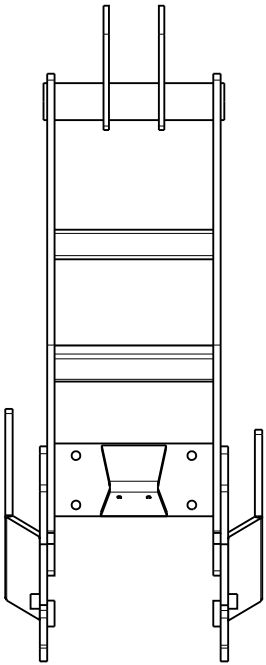
L Series Front 2 Point
KSK-490

Version#

Red highlights show the bolt placement used in this kit.
Fill out the table with your tractor's specs.
Take measurements from your tractor and fill out sheet.
Send back to your Dealer, or Kage salesmen.



Year	Make	Model	Tier*	Your Company



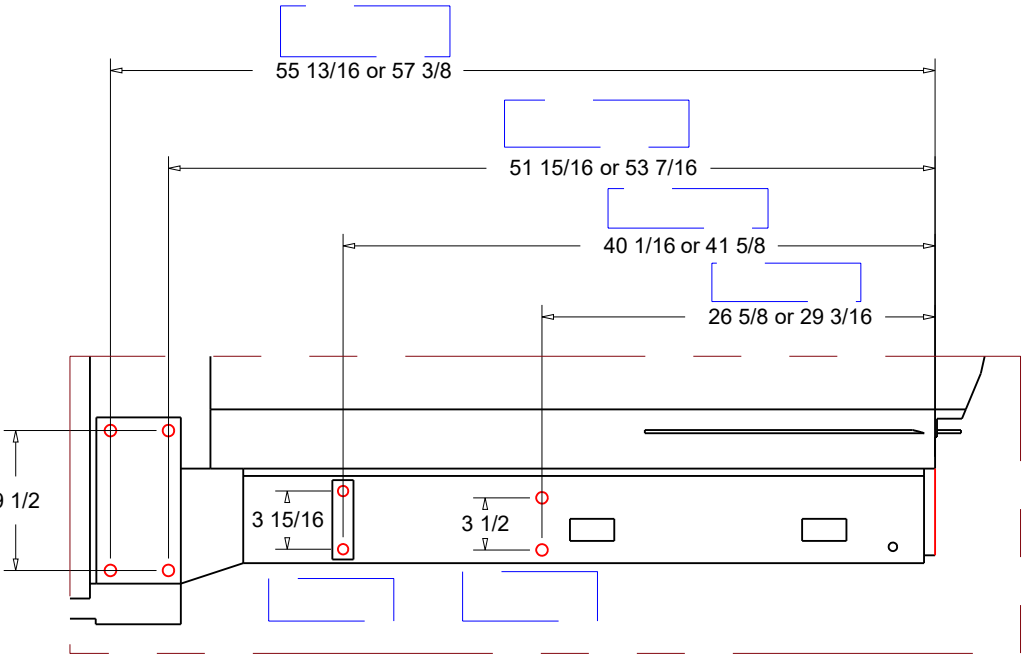
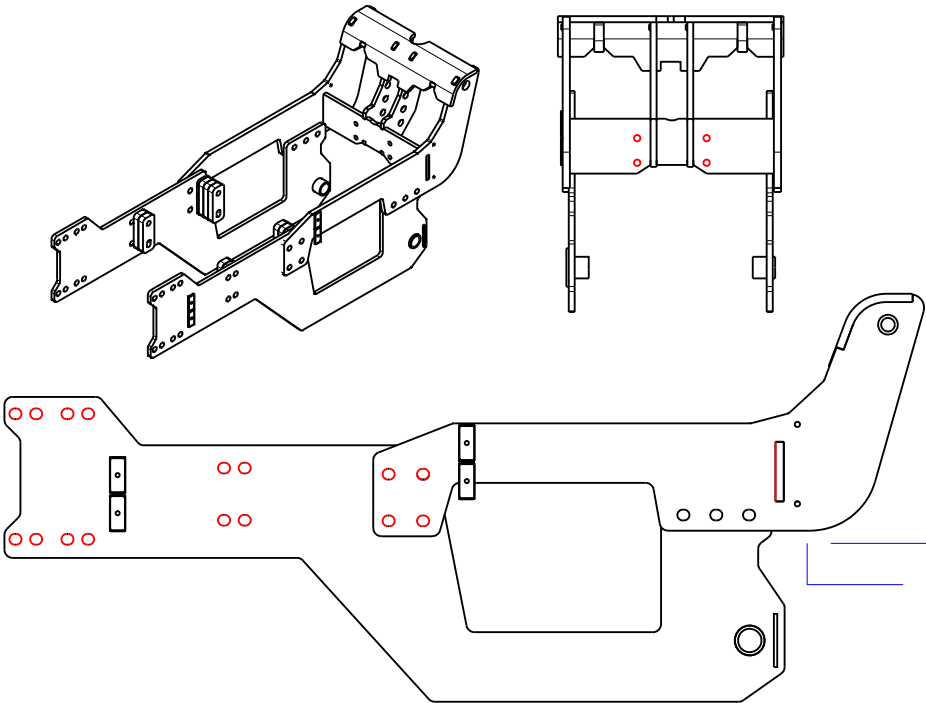
Kubota 9540 M Front 3 Point KB-9540M

Version#

Red highlights show the bolt placement used in this kit.
Fill out the table with your tractor's specs.
Take measurements from your tractor and fill out sheet.
Send back to your Dealer, or Kage salesmen.



Year	Make	Model	Tier*	Your Company



Part Name: **M135GX Front 3 Point**
Part Number: **KB-M135GX**
Part Revision: **BLANK**



Red highlights show the bolt placement used in this kit.
Fill out the table with your tractor's specs.
Take measurements from your tractor and fill out sheet.
Send back to your Dealer, or Kage salesmen.

Year	Make	Model	Tier*	Your Company

