



Under Hitch Application Review Guide

Purpose: This document to be used for instructions to submit inquiry regarding fitment of the KAGE Under-Hitch™ products.

KAGE has developed standard Under-Hitch Kits for many makes and models of tractors (listed below), however if your make / model is not listed, there is a good chance that the Under-Hitch will still fit (sometimes with slight modifications by us or by the end-user or dealer. Please use this guide to submit information to us in order to recommend the proper fit.

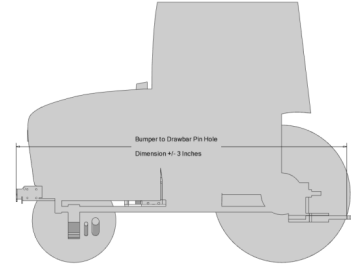
Tractor Make	Tractor Model	Compatible KAGE Undercarriage	KAGE SKU	Compatible Plow Hitch System	Tractor Requirements	Recommended Plow Series and Size
John Deere	3046	3PH8000LD	3046	TB Direct Hitch	>Loader valve / joystick in cab. >One auxiliary (mid or rear) >800-1,000 lbs counterweight recommended.	SnowFire 6'
John Deere	4066R	3PH8000	4066	TB Direct Hitch	>Loader valve / joystick in cab. >One auxiliary (mid or rear) >800-1,000 lbs counterweight rec-	SnowFire 6', 8', 9'
John Deere	5125M	3PH1200	5125	CAT II 3-Point	>Loader valve / joystick in cab. >One auxiliary (mid or rear) >800-1,000 lbs counterweight rec-	SnowFire 9', 10', 12' or SnowStorm 10', 12'
John Deere	6066R	3PH1200	6R	CAT II 3-Point	>Loader valve / joystick in cab. >One auxiliary (mid or rear)	SnowStorm 10', 12', 14'
Bobcat	CT5555	8000 LD	CT5555	TB Direct Hitch	>Loader valve / joystick in cab. >One auxiliary (mid or rear) >800-1,000 lbs counterweight rec-	SnowFire 6'
Case	MXM 155	3PH1200	6155	CAT II 3-Point	>Loader valve / joystick in cab. >One auxiliary (mid or rear)	SnowStorm 10', 12', 14'



Under Hitch Application Review Guide

Please follow these instructions to provide us with enough information to determine the correct fit for your machine. TIP: please make sure that the photos are submitted in high resolution and remain uncompressed so that we can zoom in.

1. **Measure** the distance from the front 'bumper' of the tractor to the center of the drawbar pin-hole. Try to get it within 3 inches accuracy. Measurement should not include any bolted on brush guards or weight brackets.



2. **Picture** straight on to the 'bumper' of the tractor with a large carpenter square aligned with the edges of 3 holes. Try to get the square as close to the edges without actually covering the hole.



3. **Picture** of the passenger side of the tractor frame between the front tire and cab



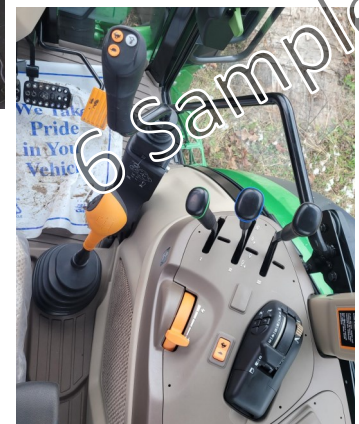
4. **Picture** of the drawbar area



5. **Picture** of the driver side of the tractor frame between the front tire and cab.



6. **Picture** of the in-cab hydraulic controls—include joystick if applicable.



7. **Picture** of rear auxiliary hydraulic bank

