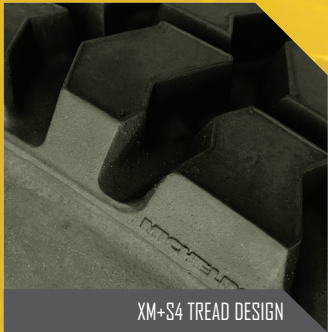


# KAGE KLAWZ

## ULTIMATE GRIP & RIDE COMFORT

Running conventional skid steer tires in the snow is perhaps the biggest contributor to slower productivity. Control of the machine is a monumental task and a jarring ride for the operator.

KAGE KLAWZ eliminates both of those trouble areas by providing maximum grip with the plow surface AND a softer ride. The result – move more snow in less time and experience less operator fatigue.



MICHELIN XM+S4 TREAD DESIGN



PROTECTED VALVE STEM

SEE TIRE SIZING SPECS  
ON THE REVERSE SIDE



**MICHELIN XM+S4 RETREADS** >  
allow the machine to transfer more power  
to the ground and absorbs more shock  
from uneven surfaces

# KAGE KLAWZ SPECIFICATIONS



## MICHELIN® RETREAD TECHNOLOGIES XM+S4® PRE-MOLD™ RETREAD

The MICHELIN® XM+S4® Pre-Mold™ Retread is a drive position retread with well-balanced properties designed for enhanced traction, especially in heavy snow conditions. MICHELIN Retreads stand up to the abuse of skid steers yet provide a far more comfortable ride for the operator.

### MICHELIN® XM+S4® BENEFITS:

- Confident handling – Enhanced traction
- Open lug tread design
- Chevron block design
- 2/32nds tread depth

MICHELIN® XM+S4® Pre-mold Retread Tires are the best performing snow tire tread on the market. They come with a Tread-life Warranty\* serviceable at any Michelin Retread dealer near you which will minimize down time — and with retreads, you may never need to buy a set of replacement tires again.

\* Michelin Pre-mold Retread Tires are warranted for the life of the tire, or down to 2/32 which is the legal limit. Search on-line for a certified Michelin retread tire dealer near you.

KAGE KLAWZ APPLICATION GUIDE					
STOCK TIRE SIZE - if your bolt pattern is Bobcat 8 on 10.25" jump to 255LG Kit					
10 x 16.5 (STOCK TIRE IS ABOUT 30-32" TALL)			12 x 16.5 (STOCK TIRE IS ABOUT 33" TALL)		
FENDER INTERFERENCE					
3" FENDER CLEARANCE REQUIRED		6" FENDER CLEARANCE REQUIRED		3" FENDER CLEARANCE REQUIRED	
SPEED INCREASE					
NO SIGNIFICANT INCREASE	11% INCREASE (~ 1.5 MPH)	11% INCREASE (~ 1.5 MPH)	18% INCREASE (~ 2.1 MPH)	NO SIGNIFICANT INCREASE	11% INCREASE (~ 2.1 MPH)
225 KIT	245 KIT*	245 KIT*	255 KIT**	245 KIT	255 KIT* OR LG***

\* NOTE: THIS CONFIGURATION INCREASES THE OVERALL HEIGHT OF THE MACHINE BY APPROXIMATELY 1 1/2"

\*\* NOTE: THIS CONFIGURATION INCREASES THE OVERALL HEIGHT OF THE MACHINE BY APPROXIMATELY 3"

TO ORDER CALL [651-433-4628](tel:651-433-4628), OR GO ONLINE: [KAGEINNOVATION.COM](http://KAGEINNOVATION.COM)