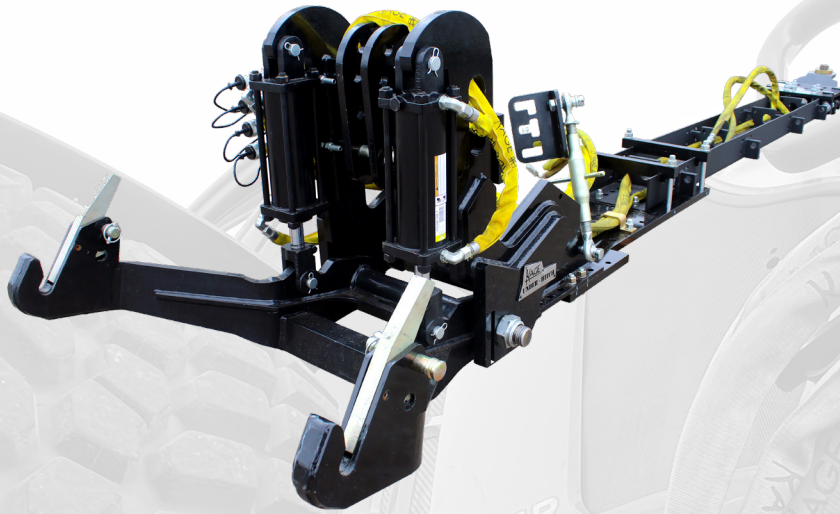


# Under-Hitch

Universal Tractor Undercarriage



## BRINGING 3-PT VERSATILITY FORWARD

Gone are the days of custom fitting tractor undercarriages to every make and model. KAGE's Under-Hitch adjusts to fit tractors of different sizes and shapes roughly 12 to 8 feet in length to ensure a perfect fit at a fraction of the cost of most other undercarriages on the market.

Use the Under-Hitch for snow plows, 3-point hitch attachments and eventually PTO attachments - all in the front of your tractor.

## KEY FEATURES



### 4-Point Installation

Install the Under-Hitch to virtually any tractor in 2-3 hours, bolting it to the bumper, drawbar & 2 stabilizers.



### Front 3-Pt Hitch

Front 3-point can pick up CAT II attachments and the top link easily stores with an easily accessed pin.



### Boom Friendly

There is no need to remove the boom brackets for loader arms. The Under-Hitch does not interfere with them.



### 12K-lb Lift Capacity

Equipped with 3.5" bore lift cylinders, it can lift more than 12,100 pounds at 2500 PSI at the 3 point hooks.



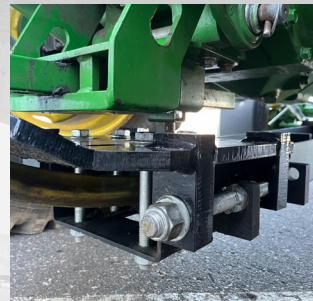
### Direct Hitch

Bring the plow closer to the cab. Compatible only with KAGE SnowFire Systems. Add the 3-point for more applications.



### Ground Clearance

All KAGE Under-Hitch options are designed to provide maximum ground clearance at the center of the tractor.



### Drawbar Slide

The threaded adjustment rod allows keeps the frame tight to prevent slop and egging out of bolt holes.

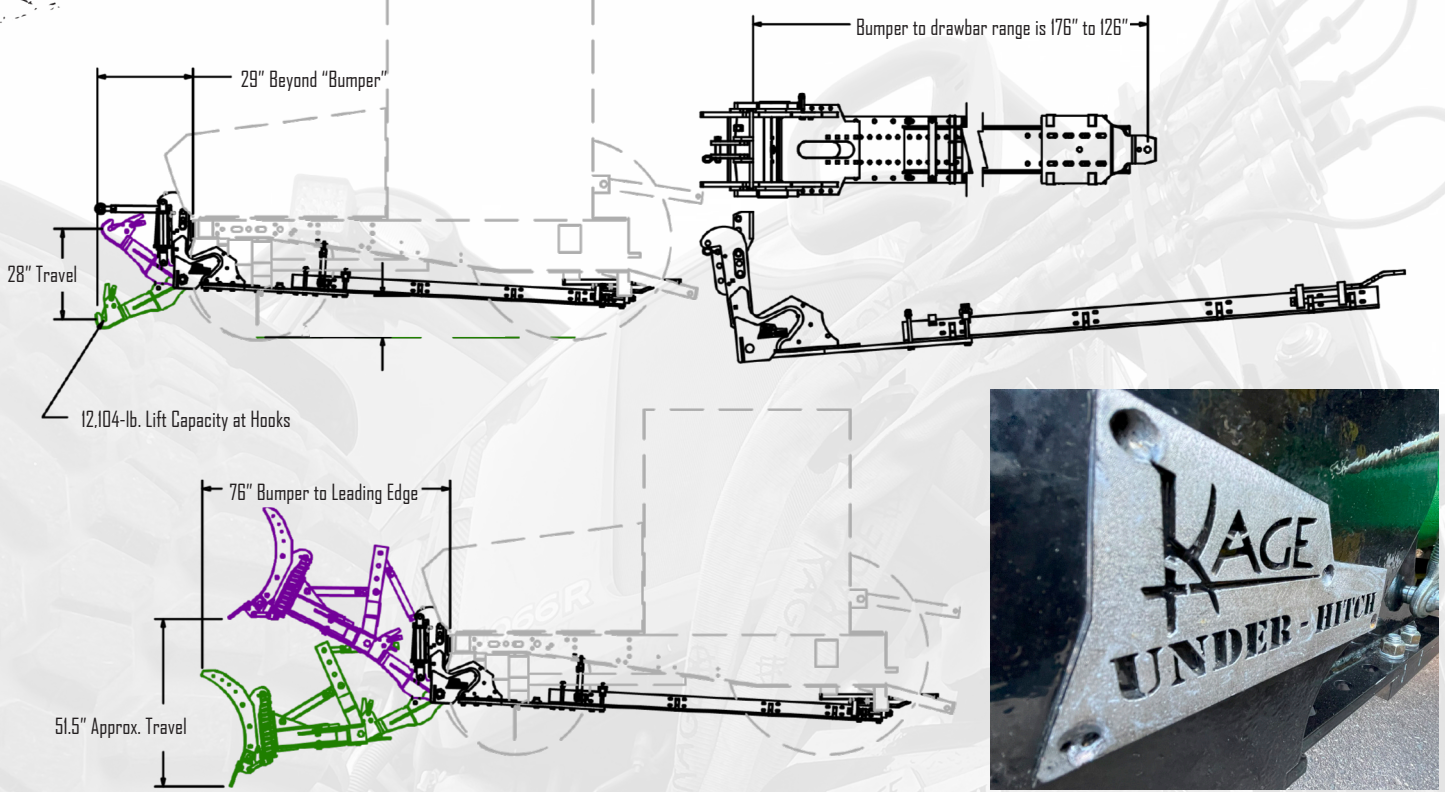


### Fits All KAGE Plows

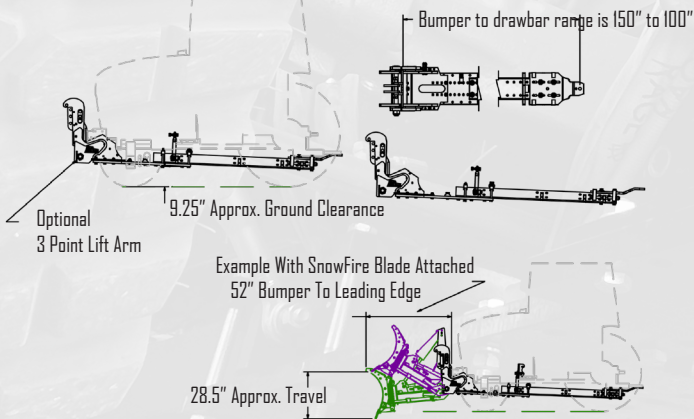
All appropriately-sized KAGE snow plows are compatible with an Under-Hitch system.

# KAGE® Under-Hitch™ Specifications

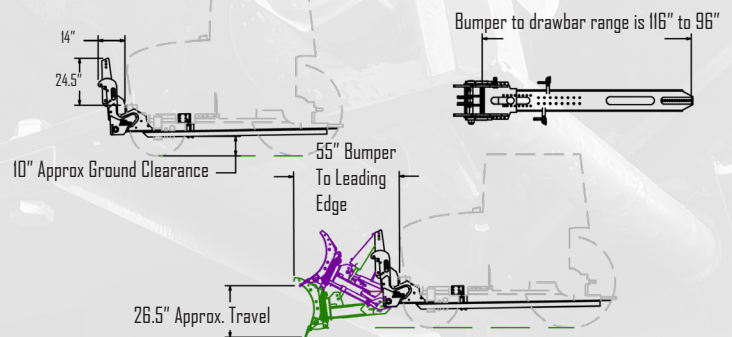
## 1200



## 8000



## 8000LD



Size Grouping	Weight LBS	Recommended Plow Compatibility	Description	P/N
1200	1,400	SnowStorm OR SnowDozer with 3 Point Hitch	Undercarriage kit with hoses and hardware for tractors where the distance from the bumper to the drawbar hitchpin is between 146" and 126". Choose tractor model from the interchange codes.	3PH12000-{Select Tractor Code}
8000	1,050	SnowFire with Direct Attach pivot frame, OR 3 Point pivot frame	Undercarriage kit with hoses and hardware for tractors where the distance from the bumper to the drawbar hitchpin is between 125" and 95". Choose tractor model from the interchange codes.	3PH8000-{Select Tractor Code}
8000LD	973	SnowFire with Direct Atch pivot frame	Undercarriage kit with hoses and hardware for tractors where the distance form the bumper to the drawbar hitchpin is between 116" and 96". Choose tractor model from the interchange codes.	3PH8000LD-{Select Tractor Code}